

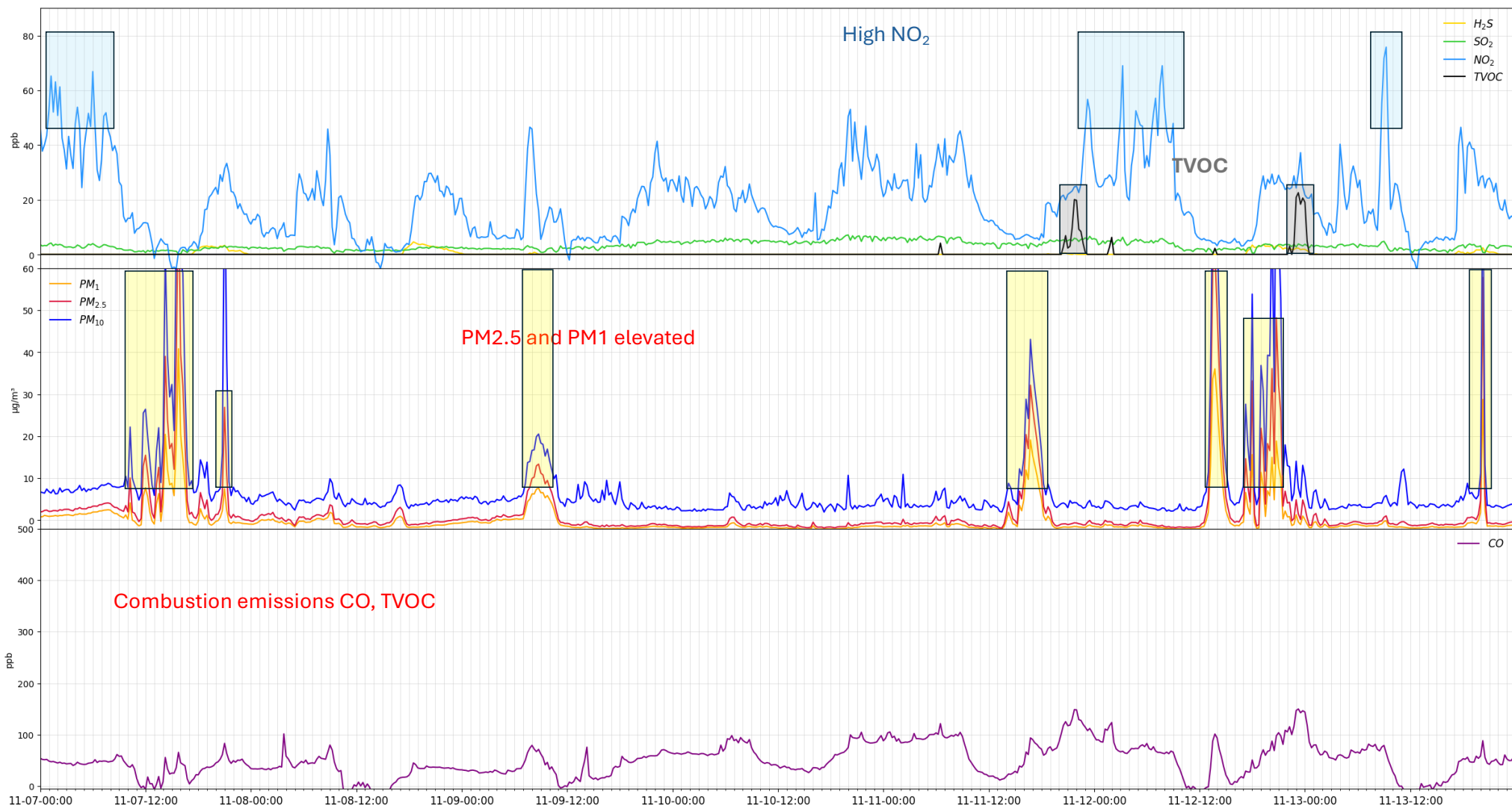
St. James POD

November 7 – November 13, 2025

Disclaimer

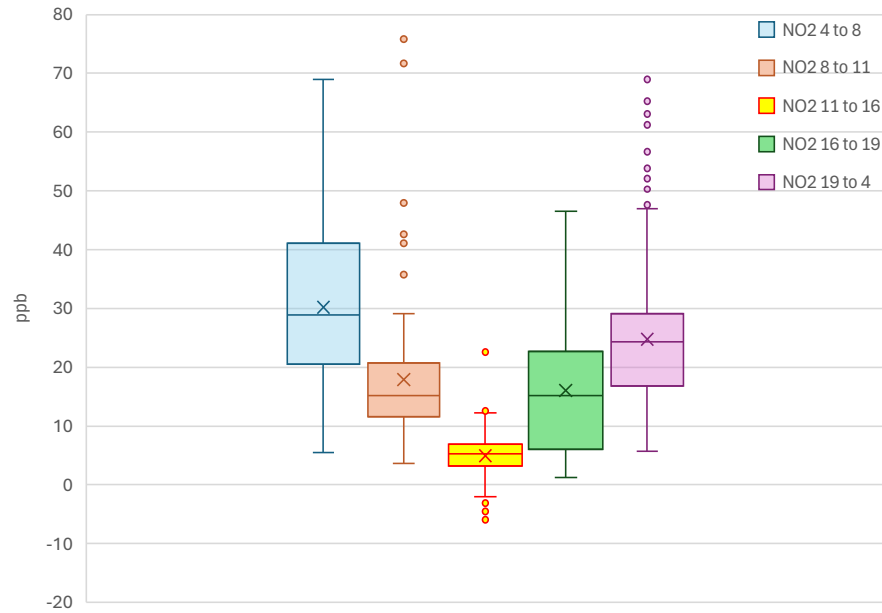
The data presented on this website were collected by non-regulatory monitors (air quality sensors) that do not meet the most current Environmental Protection Agency-approved or promulgated emission test or monitoring method. Thus, consistent with Louisiana's Community Air Monitoring Reliability Act, the data may not be used to allege violations or non-compliance with federal or State law. Rather, the data is intended for non-regulatory applications -- specifically, to better understand local air quality and to help communities to work with local companies to seek solutions to observed pollution events in a collaborative manner.

At the same time, most of the sensors are subject to QA/QC procedures and are calibrated and evaluated against official regulatory monitors.



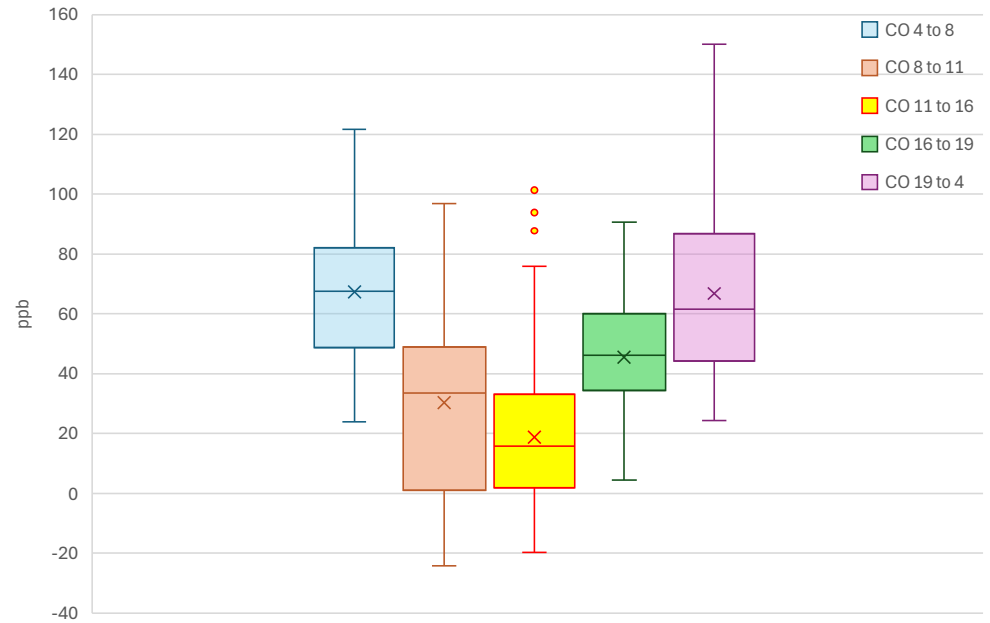
Hourly concentration distribution

NO2 hourly distribution



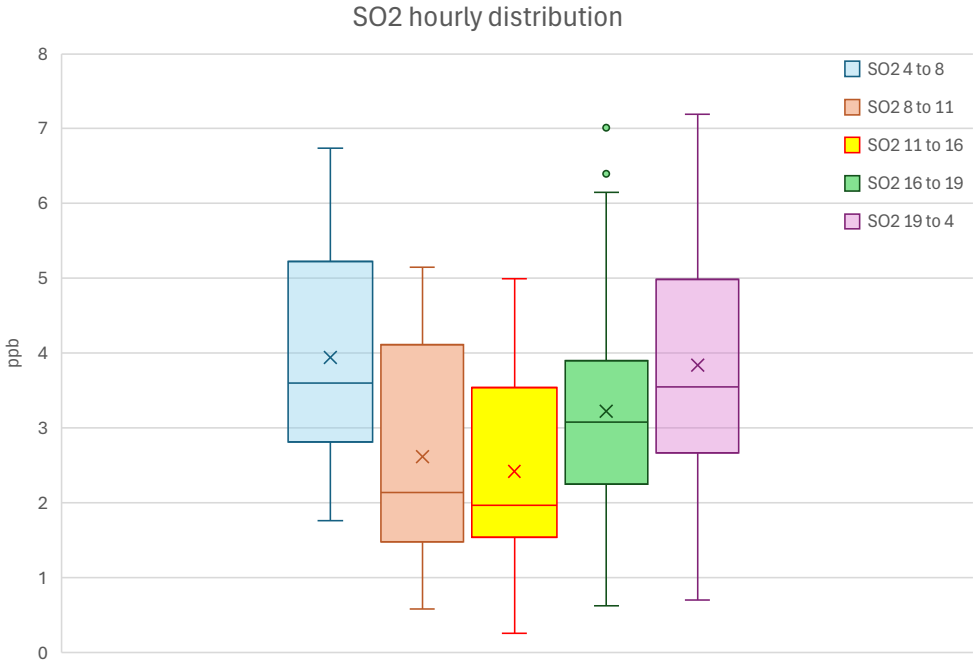
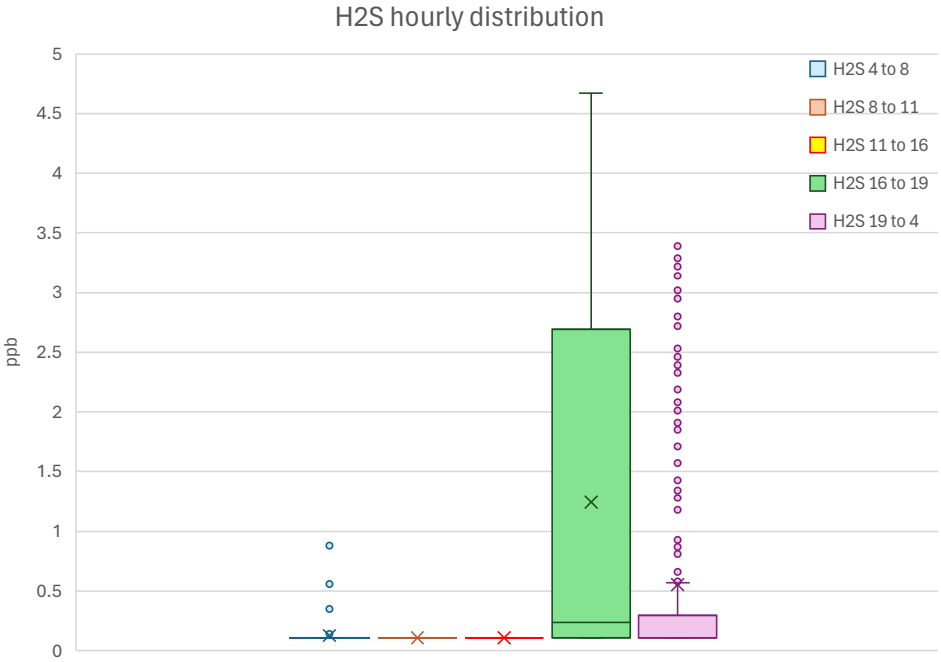
ppb	Mean	Median	Q1	Q3	Min	Max	# points
NO2 4 to 8	30.2	28.9	20.4	41.1	5.4	69.0	112
NO2 8 to 11	17.9	15.1	11.6	20.8	3.6	75.8	84
NO2 11 to 16	5.0	5.3	3.2	6.8	-5.9	22.5	140
NO2 16 to 19	16.0	15.1	6.1	22.7	1.2	46.5	84
NO2 19 to 4	24.8	24.4	16.8	29.2	5.8	69.0	252

CO hourly distribution



ppb	Mean	Median	Q1	Q3	Min	Max	# points
CO 4 to 8	67.3	67.5	48.7	82.7	23.9	121.6	112
CO 8 to 11	30.4	33.6	1.1	48.9	-24.1	96.8	84
CO 11 to 16	18.9	15.8	1.9	33.1	-19.7	101.4	140
CO 16 to 19	45.5	46.2	34.5	60.1	4.5	90.6	84
CO 19 to 4	66.8	61.5	44.1	87.3	24.3	150.0	252

Hourly concentration distribution



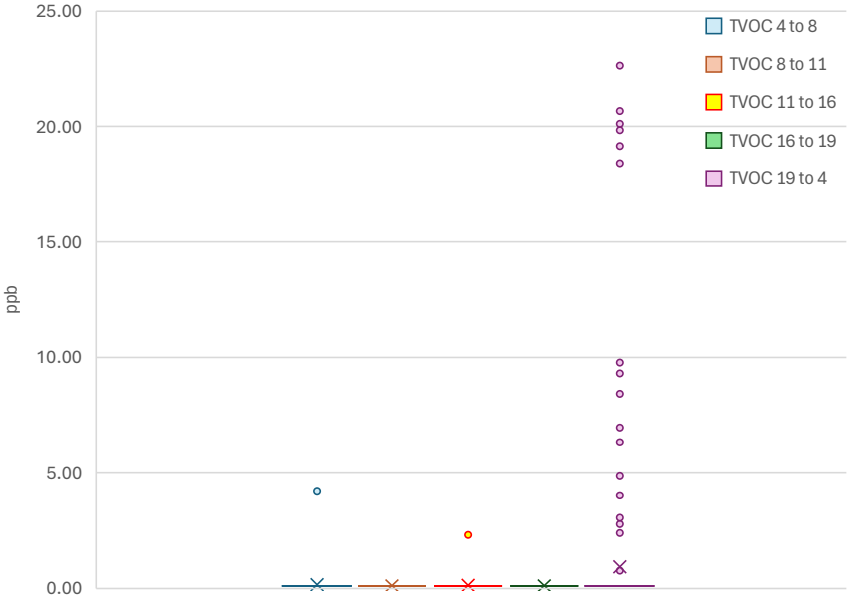
ppb	Mean	Median	Q1	Q3	Min	Max	# points
H2S 4 to 8	0.1	0.1	0.1	0.0	0.0	0.9	112
H2S 8 to 11	0.1	0.1	0.1	0.1	0.1	0.1	84
H2S 11 to 16	0.1	0.1	0.1	0.1	0.1	0.1	140
H2S 16 to 19	1.2	0.2	0.1	2.7	0.1	4.7	84
H2S 19 to 4	0.6	0.1	0.1	0.3	0.1	3.4	252

ppb	Mean	Median	Q1	Q3	Min	Max	# points
SO2 4 to 8	3.9	3.6	2.8	5.2	1.8	6.7	112
SO2 8 to 11	2.6	2.1	1.5	4.1	0.6	5.2	84
SO2 11 to 16	2.4	2.0	1.5	3.5	0.3	5.0	140
SO2 16 to 19	3.2	3.1	2.3	3.9	0.6	7.0	84
SO2 19 to 4	3.8	3.6	2.7	5.0	0.7	7.2	252

H₂S data is not referenced and calibrated against regulatory monitor

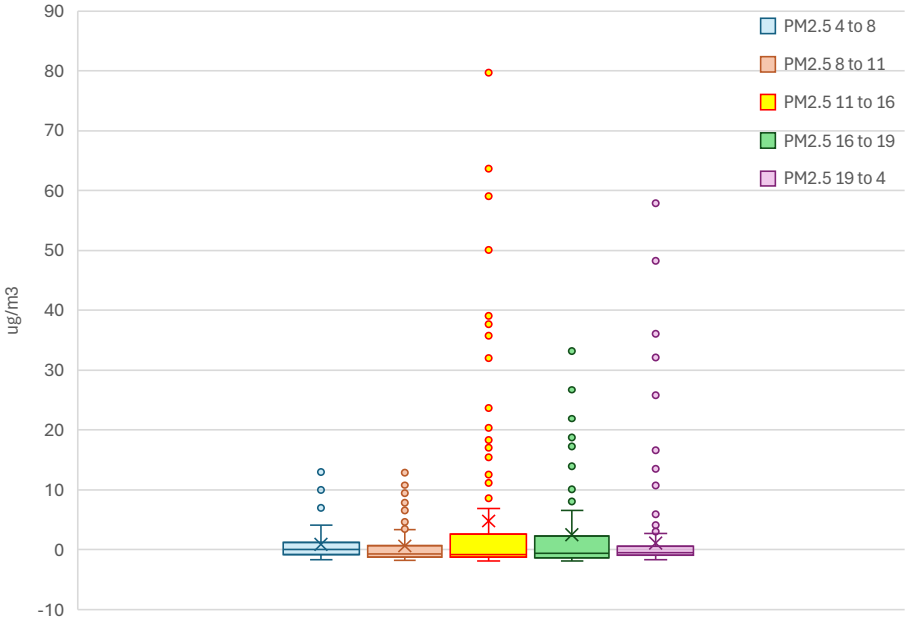
Hourly concentration distribution

TVOC hourly distribution



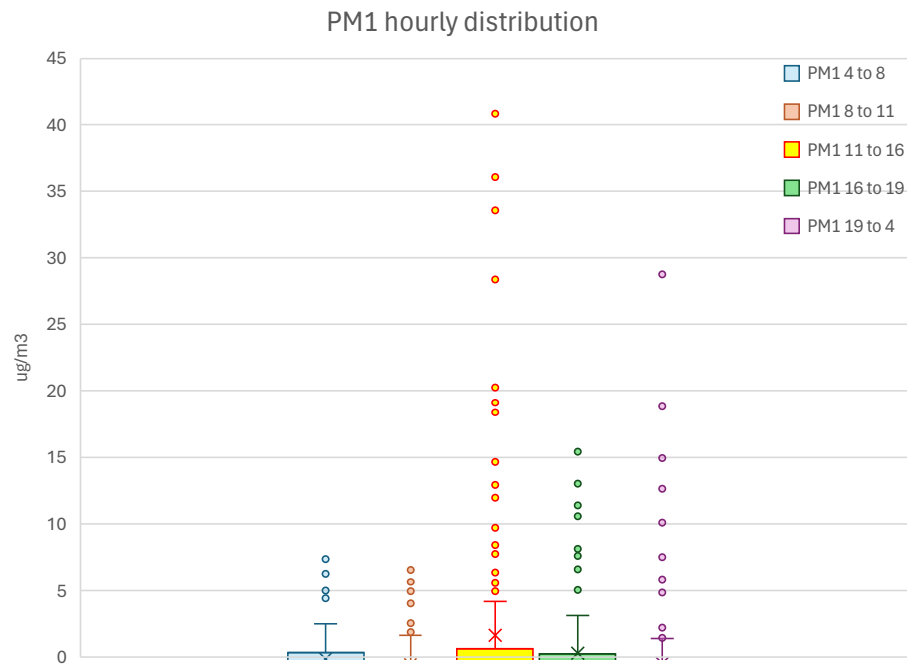
ppb	Mean	Median	Q1	Q3	Min	Max	# points
TVOC 4 to 8	0.1	0.1	0.1	0.1	0.1	4.2	112
TVOC 8 to 11	0.1	0.1	0.1	0.1	0.1	0.1	84
TVOC 11 to 16	0.1	0.1	0.1	0.1	0.1	2.3	140
TVOC 16 to 19	0.1	0.1	0.1	0.1	0.1	0.1	84
TVOC 19 to 4	0.9	0.1	0.1	0.1	0.1	22.6	252

PM2.5 hourly distribution

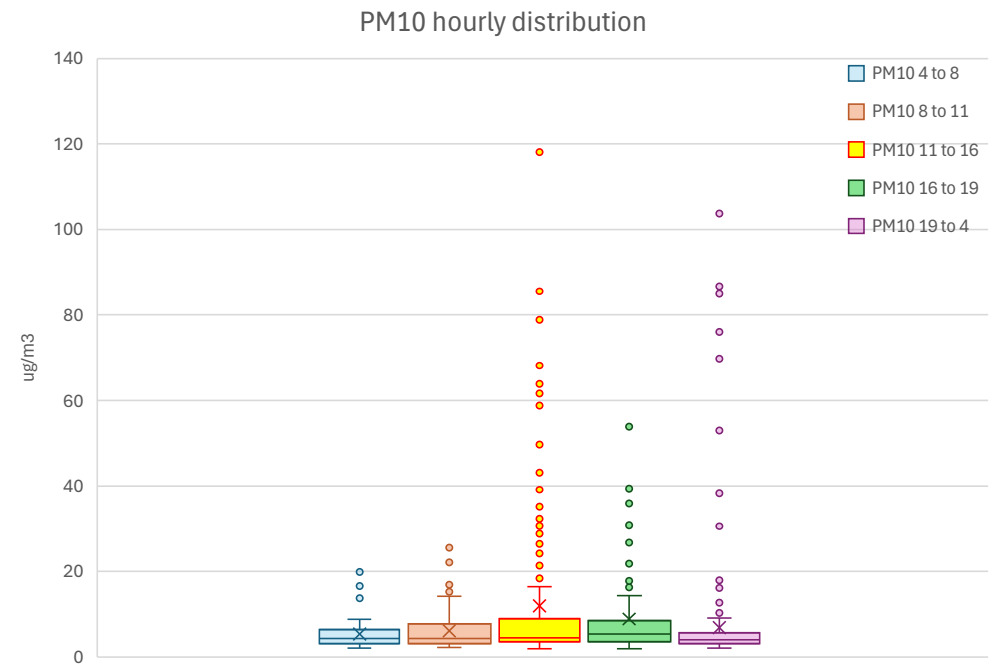


ug/m3	Mean	Median	Q1	Q3	Min	Max	# points
PM2.5 4 to 8	0.9	0.0	-0.8	1.3	-1.7	13.4	112
PM2.5 8 to 11	0.6	-0.7	-1.2	0.7	-1.8	12.9	84
PM2.5 11 to 16	4.8	-0.9	-1.2	2.6	-1.9	79.7	140
PM2.5 16 to 19	2.5	-0.6	-1.3	2.3	-1.9	33.2	84
PM2.5 19 to 4	1.1	-0.5	-0.9	0.7	-1.6	57.8	252

Hourly concentration distribution



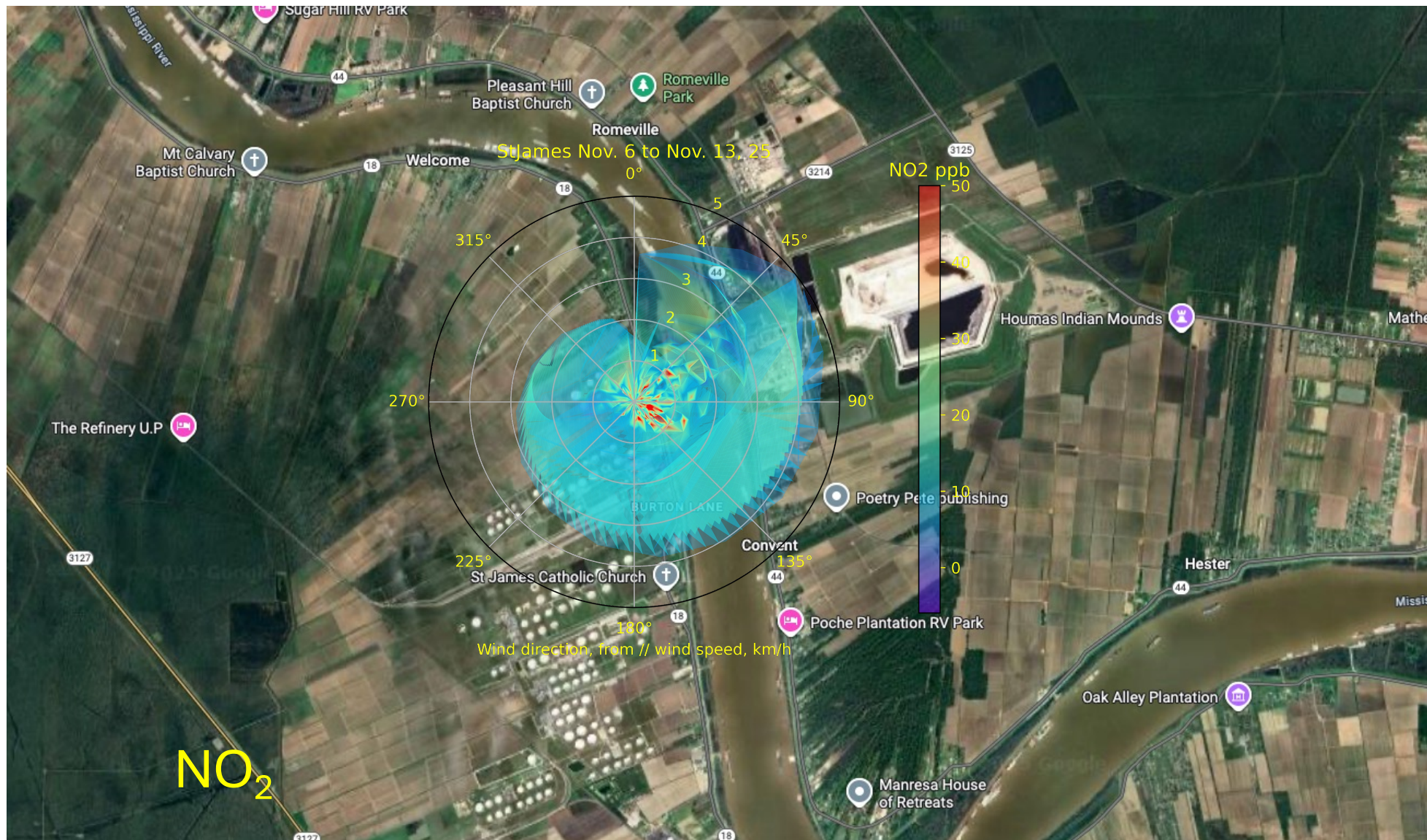
ug/m3	Mean	Median	Q1	Q3	Min	Max	# points
PM1 4 to 8	-0.1	-1.0	-1.4	0.3	-2.1	7.7	112
PM1 8 to 11	-0.6	-1.5	-1.8	-0.4	-2.1	6.6	84
PM1 11 to 16	1.6	-1.6	-1.8	0.6	-2.2	40.8	140
PM1 16 to 19	0.3	-1.4	-1.9	0.3	-2.1	15.6	84
PM1 19 to 4	-0.5	-1.3	-1.6	-0.4	-1.9	28.8	252

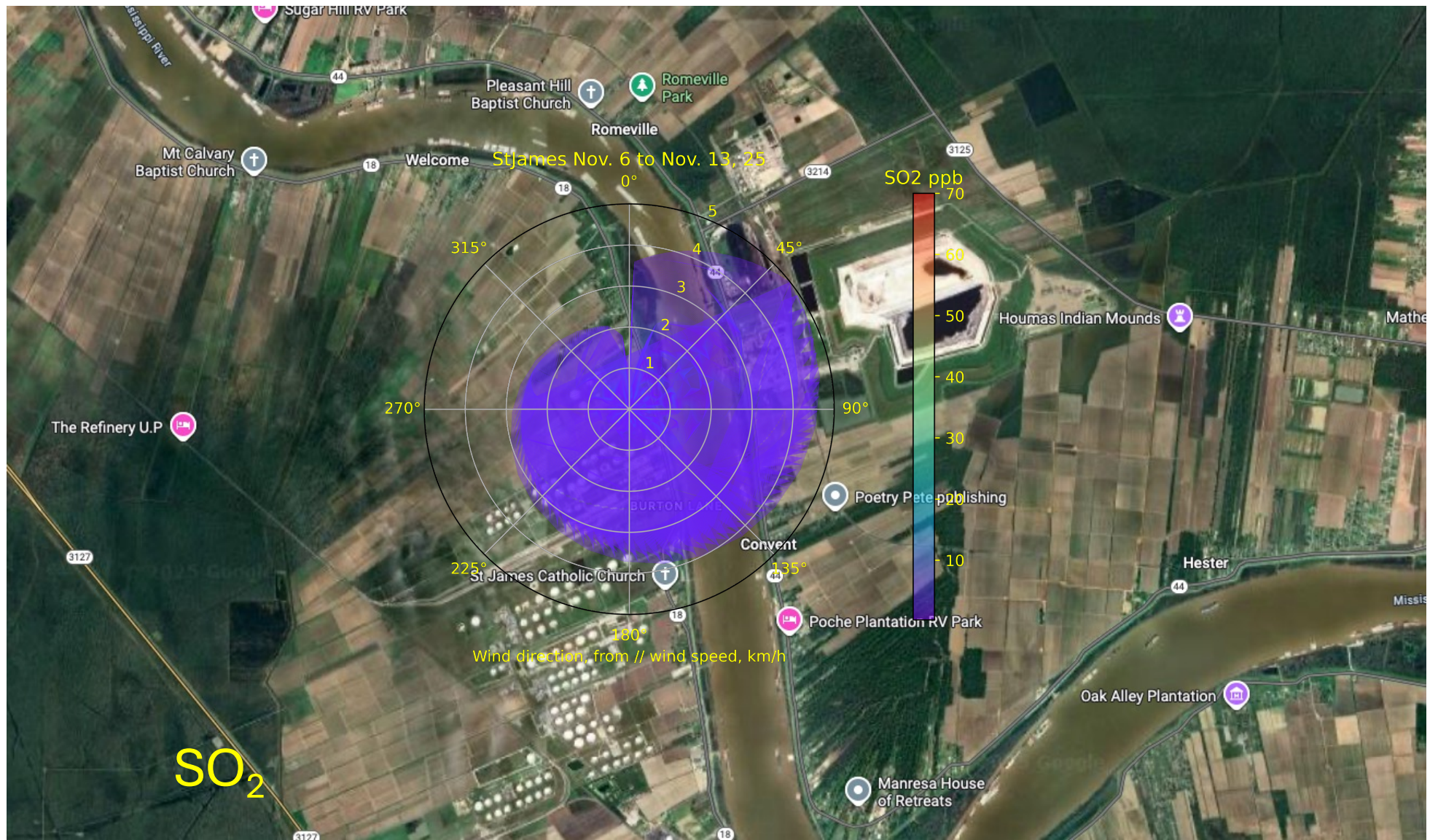


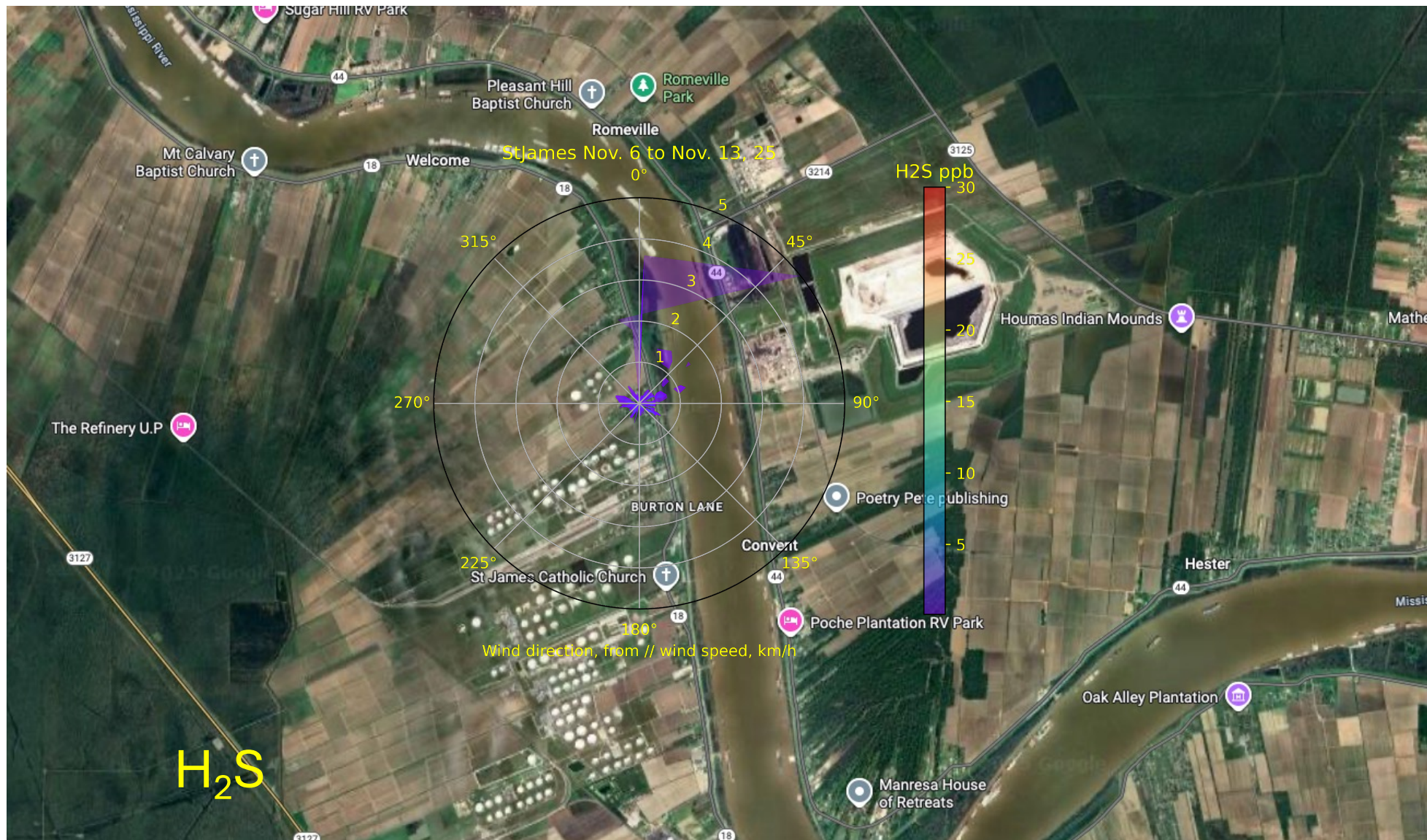
ug/m3	Mean	Median	Q1	Q3	Min	Max	# points
PM10 4 to 8	5.3	4.4	3.2	6.5	2.2	20.5	112
PM10 8 to 11	6.2	4.3	3.2	7.8	2.2	25.6	84
PM10 11 to 16	12.0	4.5	3.7	8.9	2.0	118.1	140
PM10 16 to 19	8.9	5.4	3.7	8.6	1.9	53.9	84
PM10 19 to 4	6.8	4.1	3.1	5.8	2.2	103.7	252

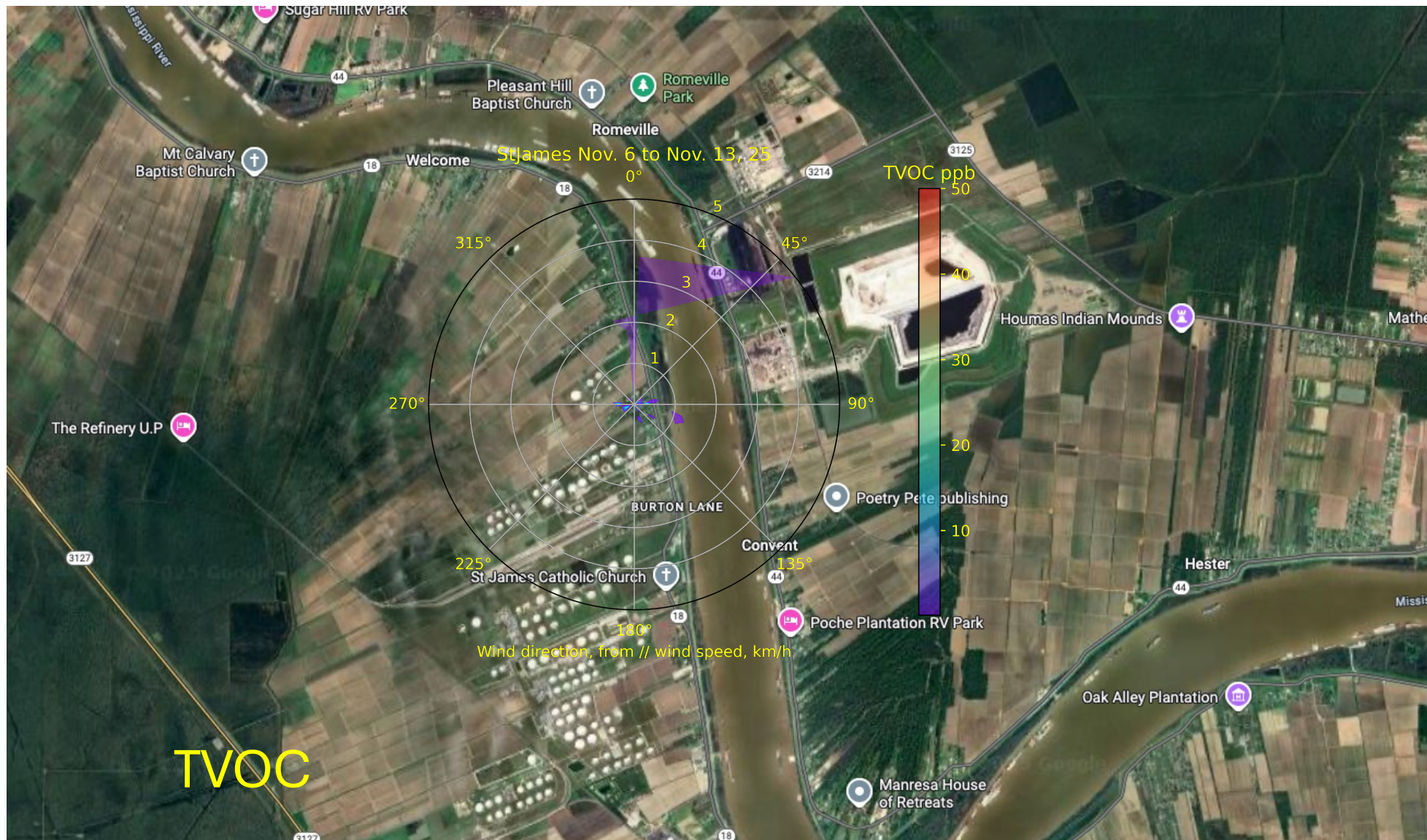
PM₁ data is not referenced and calibrated against regulatory monitor

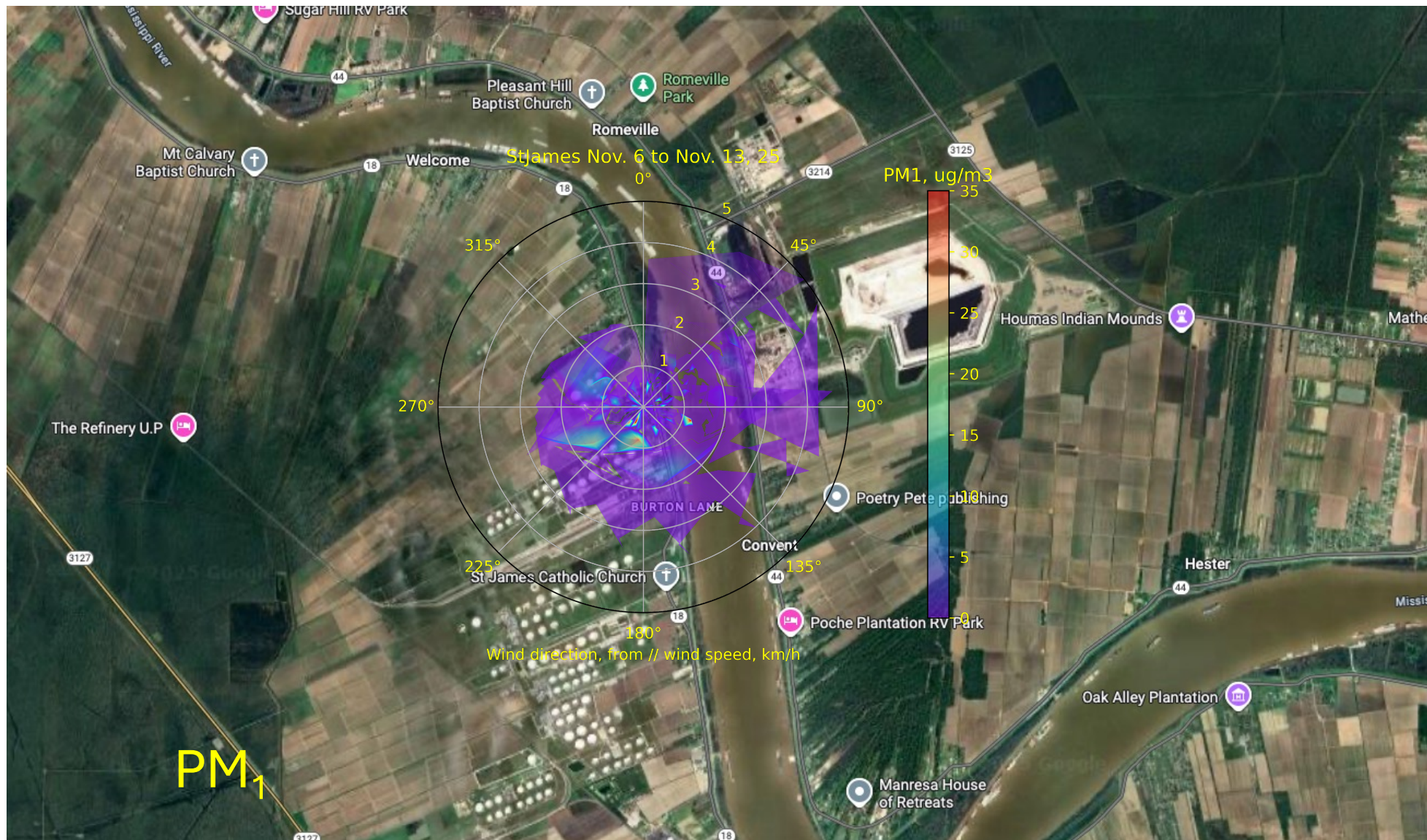


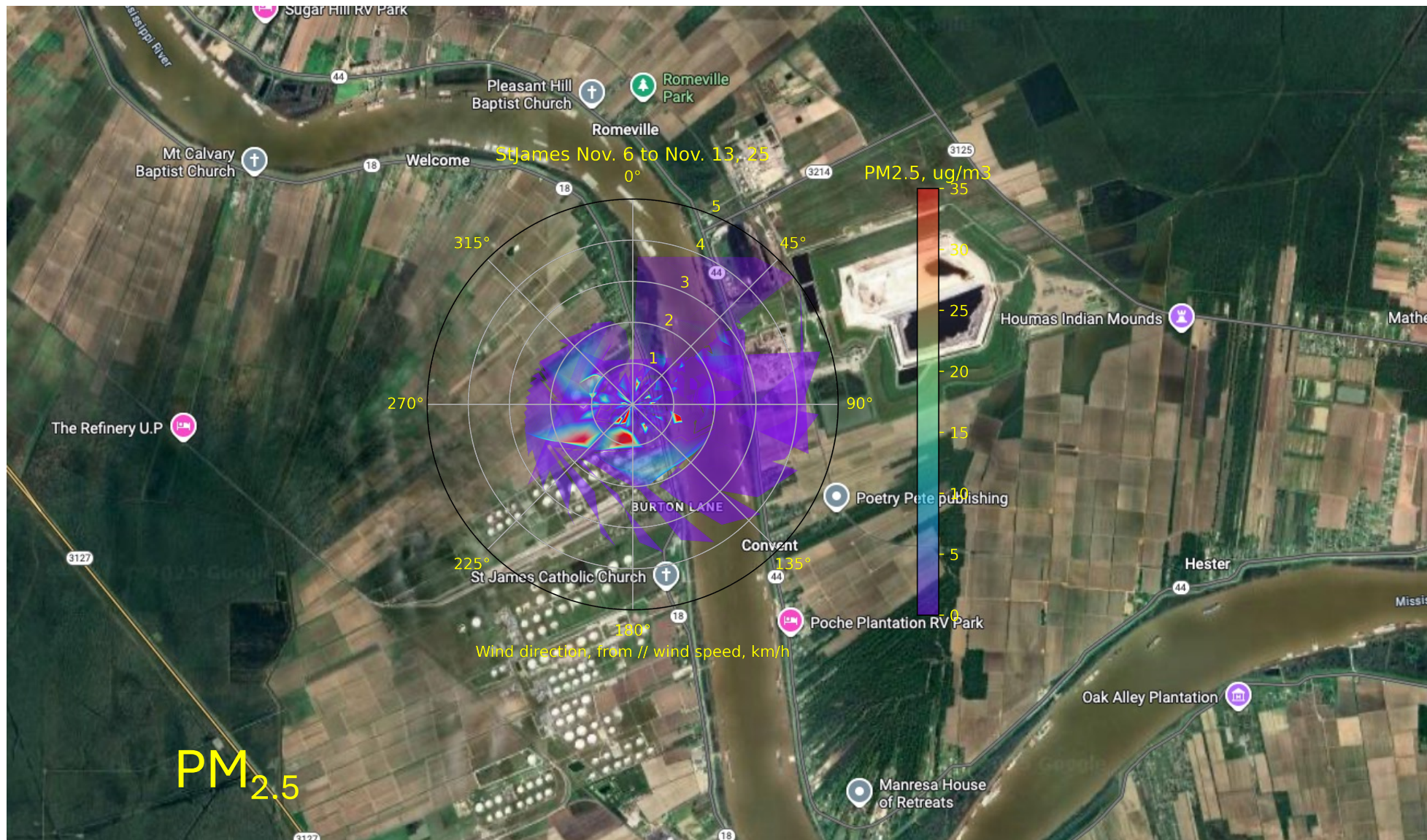


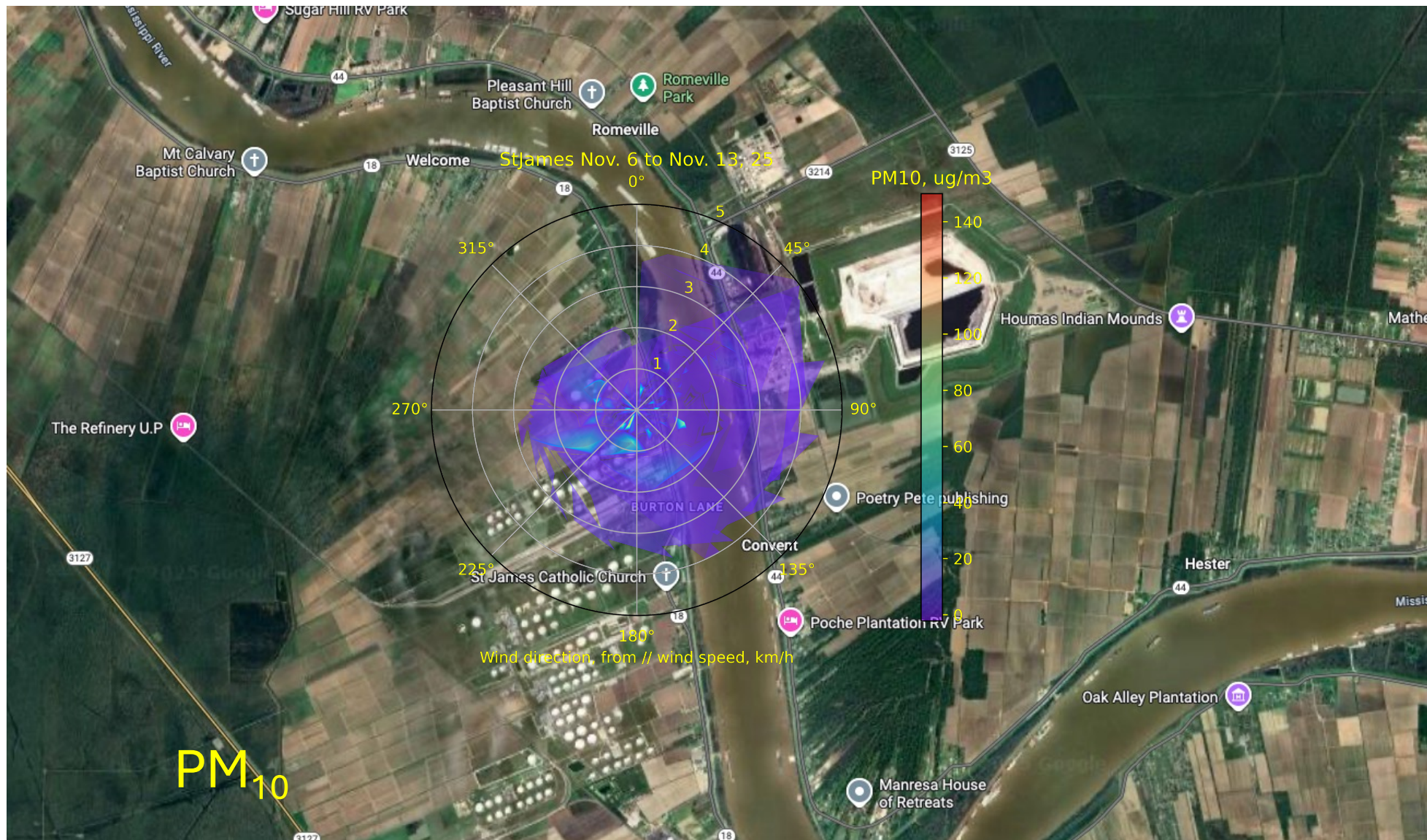














St. James POD 11/06-11/13

- High levels of $PM_{2.5}$ (especially on November 7 and November 12) from South-West/South direction. This is a non-combustion source.
- NO_2 at times at high levels, pointing to South-East and North-East