

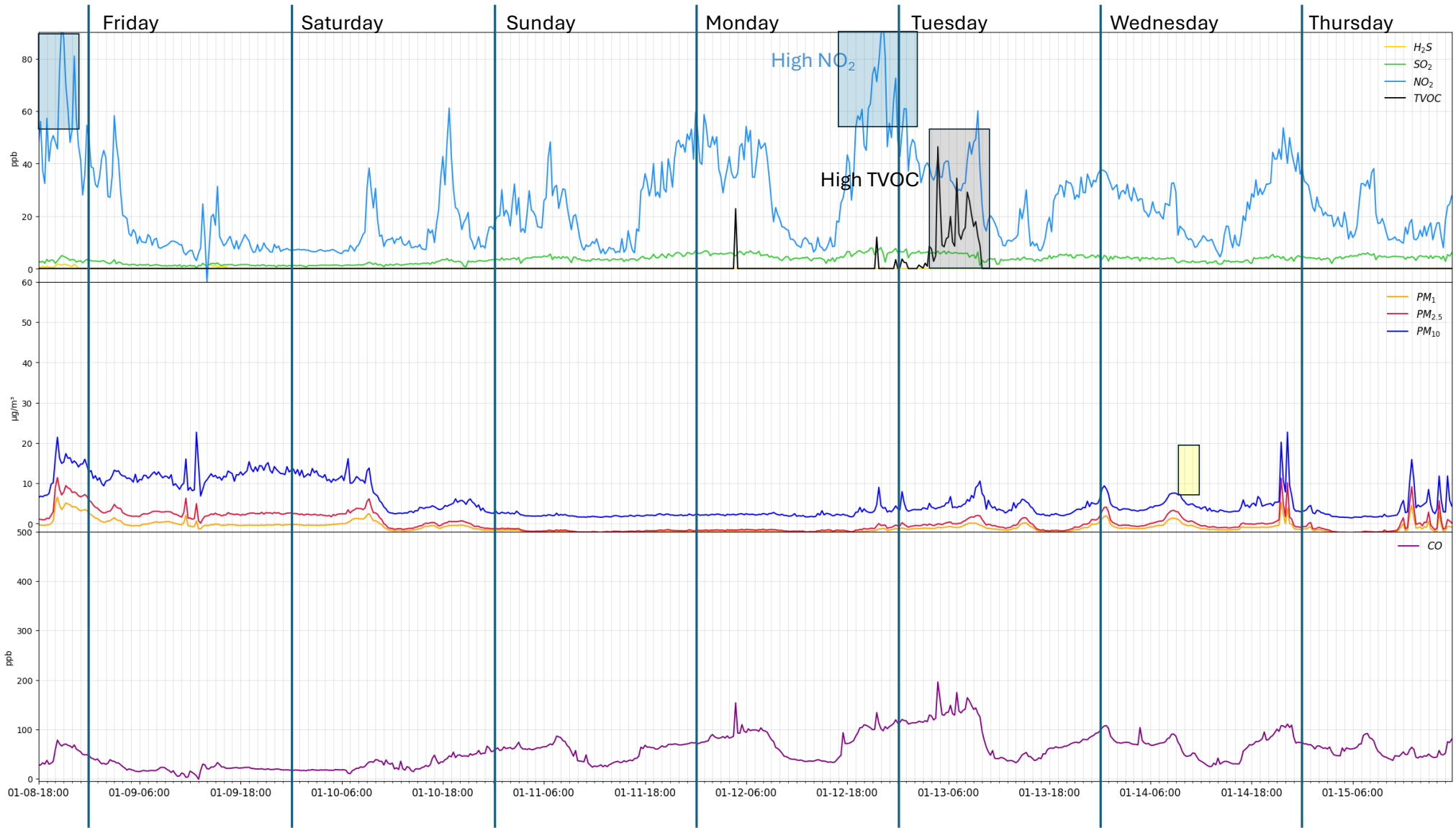
St. James POD

January 9 – January 15, 2026

Disclaimer

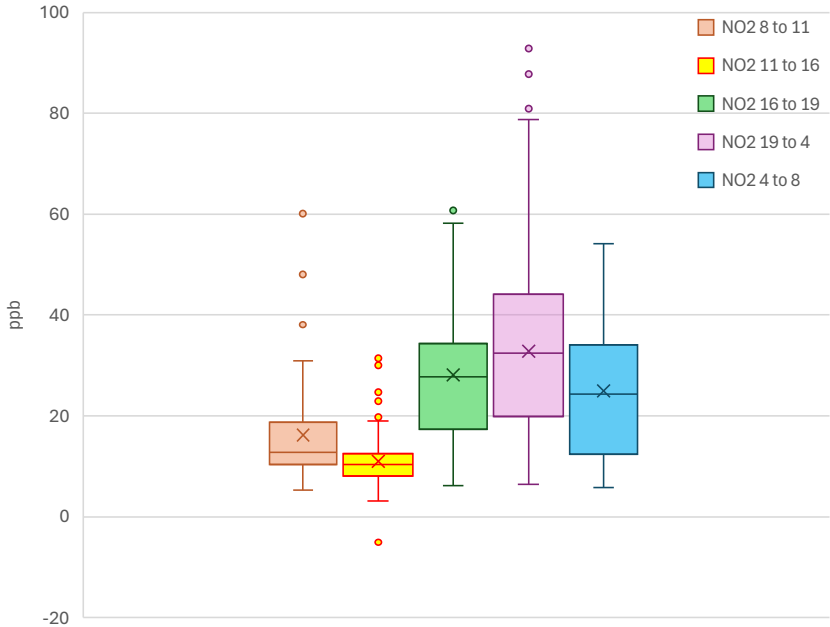
The data presented on this website were collected by non-regulatory monitors (air quality sensors) that do not meet the most current Environmental Protection Agency-approved or promulgated emission test or monitoring method. Thus, consistent with Louisiana's Community Air Monitoring Reliability Act, the data may not be used to allege violations or non-compliance with federal or State law. Rather, the data is intended for non-regulatory applications -- specifically, to better understand local air quality and to help communities to work with local companies to seek solutions to observed pollution events in a collaborative manner.

At the same time, most of the sensors are subject to QA/QC procedures and are calibrated and evaluated against official regulatory monitors.

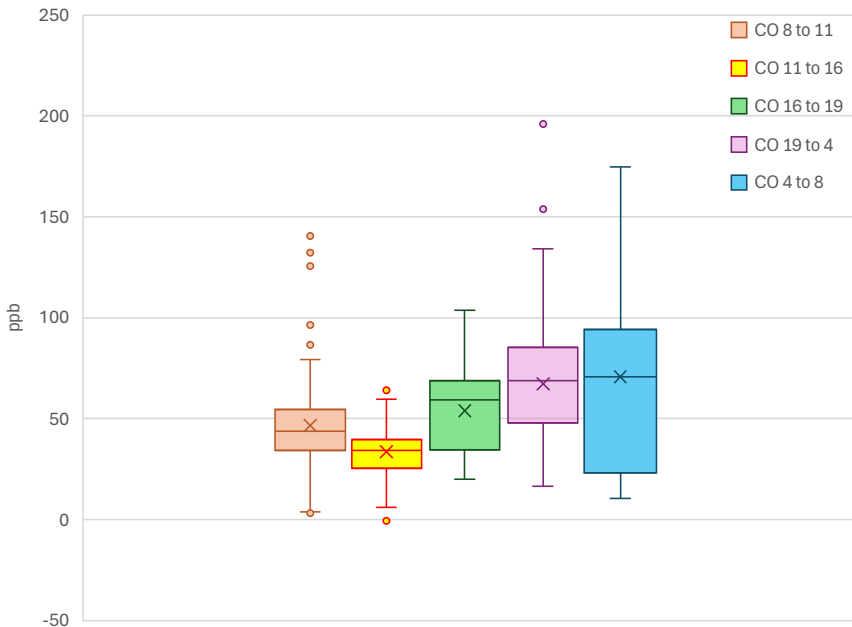


Hourly concentration distribution

NO₂ hourly distribution



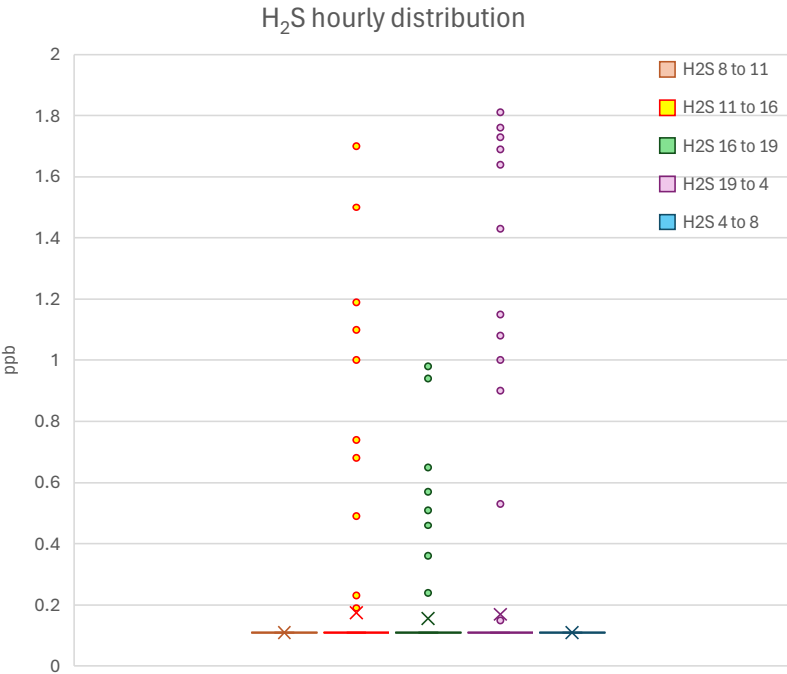
CO hourly distribution



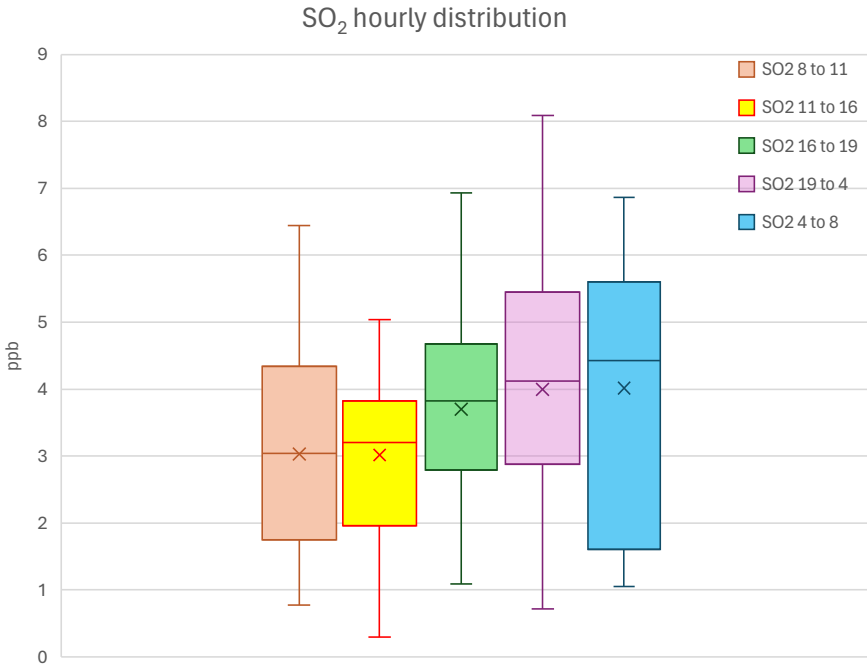
ppb	Mean	Median	Q1	Q3	Min	Max	# points
NO ₂ 4 to 8	24.9	24.3	12.4	34.1	5.8	54.2	112
NO ₂ 8 to 11	16.2	12.8	10.4	18.8	5.3	60.1	84
NO ₂ 11 to 16	11.0	10.4	8.0	12.5	-5.1	31.4	140
NO ₂ 16 to 19	28.1	27.8	17.3	34.4	6.2	61.2	84
NO ₂ 19 to 4	32.9	32.5	19.8	44.2	6.4	94.1	252

ppb	Mean	Median	Q1	Q3	Min	Max	# points
CO 4 to 8	70.7	70.8	23.1	94.2	10.6	174.7	112
CO 8 to 11	46.6	43.9	34.2	54.7	3.1	143.5	84
CO 11 to 16	33.5	34.4	25.5	39.5	-0.7	63.9	140
CO 16 to 19	54.0	59.3	34.5	68.9	20.1	103.8	84
CO 19 to 4	67.3	68.8	47.6	85.4	16.4	195.9	252

Hourly concentration distribution



ppb	Mean	Median	Q1	Q3	Min	Max	# points
H ₂ S 4 to 8	0.1	0.1	0.1	0.1	0.1	0.1	112
H ₂ S 8 to 11	0.1	0.1	0.1	0.1	0.1	0.1	84
H ₂ S 11 to 16	0.2	0.1	0.1	0.1	0.1	1.7	140
H ₂ S 16 to 19	0.2	0.1	0.1	0.1	0.1	1.0	84
H ₂ S 19 to 4	0.2	0.1	0.1	0.1	0.1	1.8	252

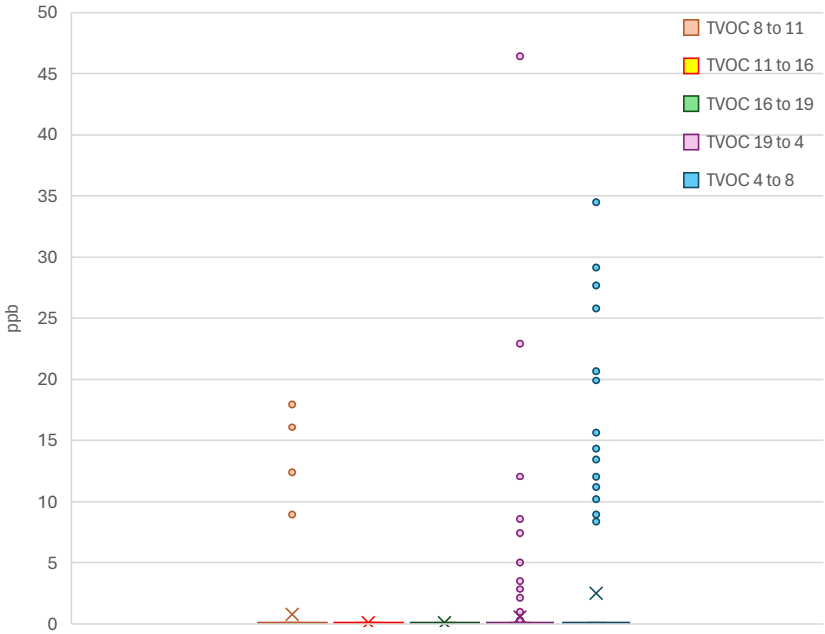


ppb	Mean	Median	Q1	Q3	Min	Max	# points
SO ₂ 4 to 8	4.0	4.4	1.6	5.6	1.1	6.9	112
SO ₂ 8 to 11	3.0	3.0	1.7	4.3	0.8	6.4	84
SO ₂ 11 to 16	3.0	3.2	2.0	3.8	0.3	5.0	140
SO ₂ 16 to 19	3.7	3.8	2.8	4.7	1.1	6.9	84
SO ₂ 19 to 4	4.0	4.1	2.9	5.5	0.7	8.1	252

H₂S data is not referenced and calibrated against regulatory monitor

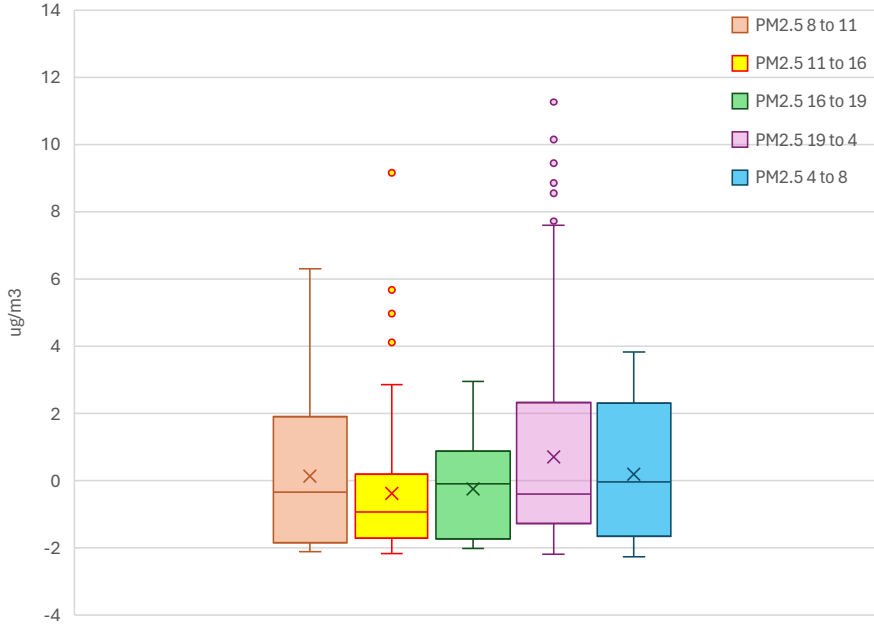
Hourly concentration distribution

TVOC hourly distribution



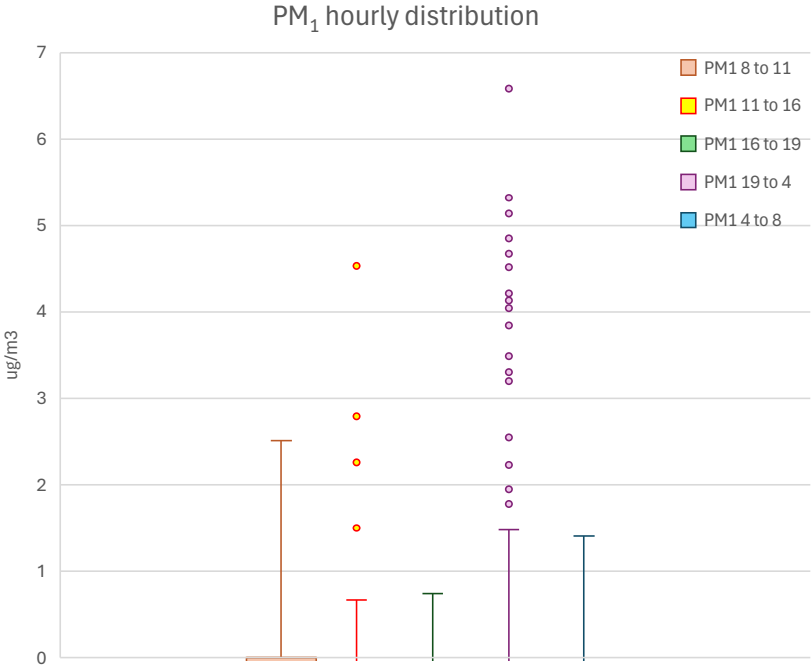
ppb	Mean	Median	Q1	Q3	Min	Max	# points
TVOC 4 to 8	2.5	0.1	0.1	0.1	0.1	34.5	112
TVOC 8 to 11	0.8	0.1	0.1	0.1	0.1	18.0	84
TVOC 11 to 16	0.1	0.1	0.1	0.1	0.1	0.1	140
TVOC 16 to 19	0.1	0.1	0.1	0.1	0.1	0.1	84
TVOC 19 to 4	0.6	0.1	0.1	0.1	0.1	46.4	252

PM_{2.5} hourly distribution

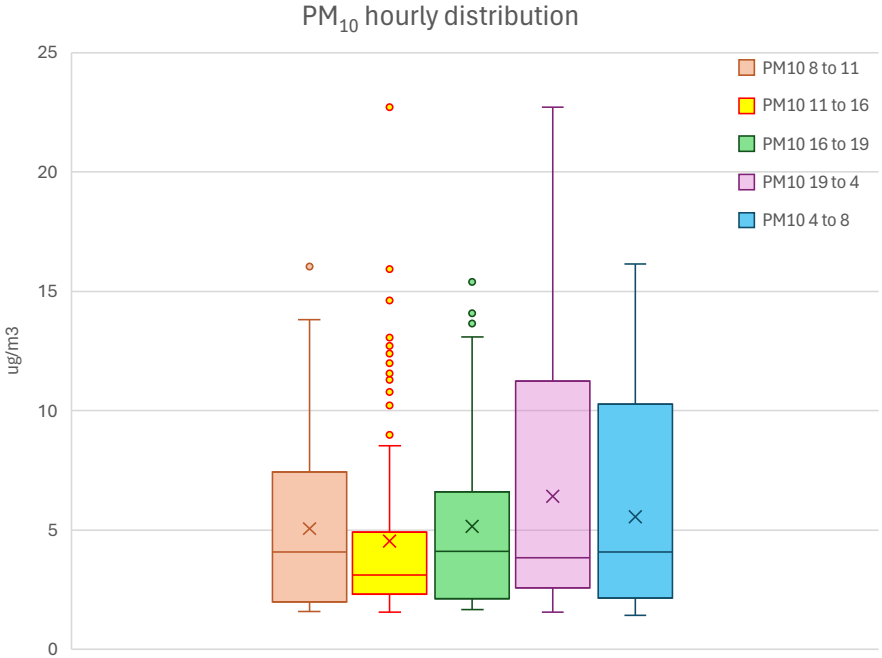


ug/m ³	Mean	Median	Q1	Q3	Min	Max	# points
PM _{2.5} 4 to 8	0.2	0.0	-1.7	2.3	-2.3	3.8	112
PM _{2.5} 8 to 11	0.1	-0.3	-1.8	1.9	-2.1	6.3	84
PM _{2.5} 11 to 16	-0.4	-0.9	-1.7	0.2	-2.2	9.2	140
PM _{2.5} 16 to 19	-0.2	-0.1	-1.7	0.9	-2.0	3.0	84
PM _{2.5} 19 to 4	0.7	-0.4	-1.3	2.3	-2.2	11.4	252

Hourly concentration distribution

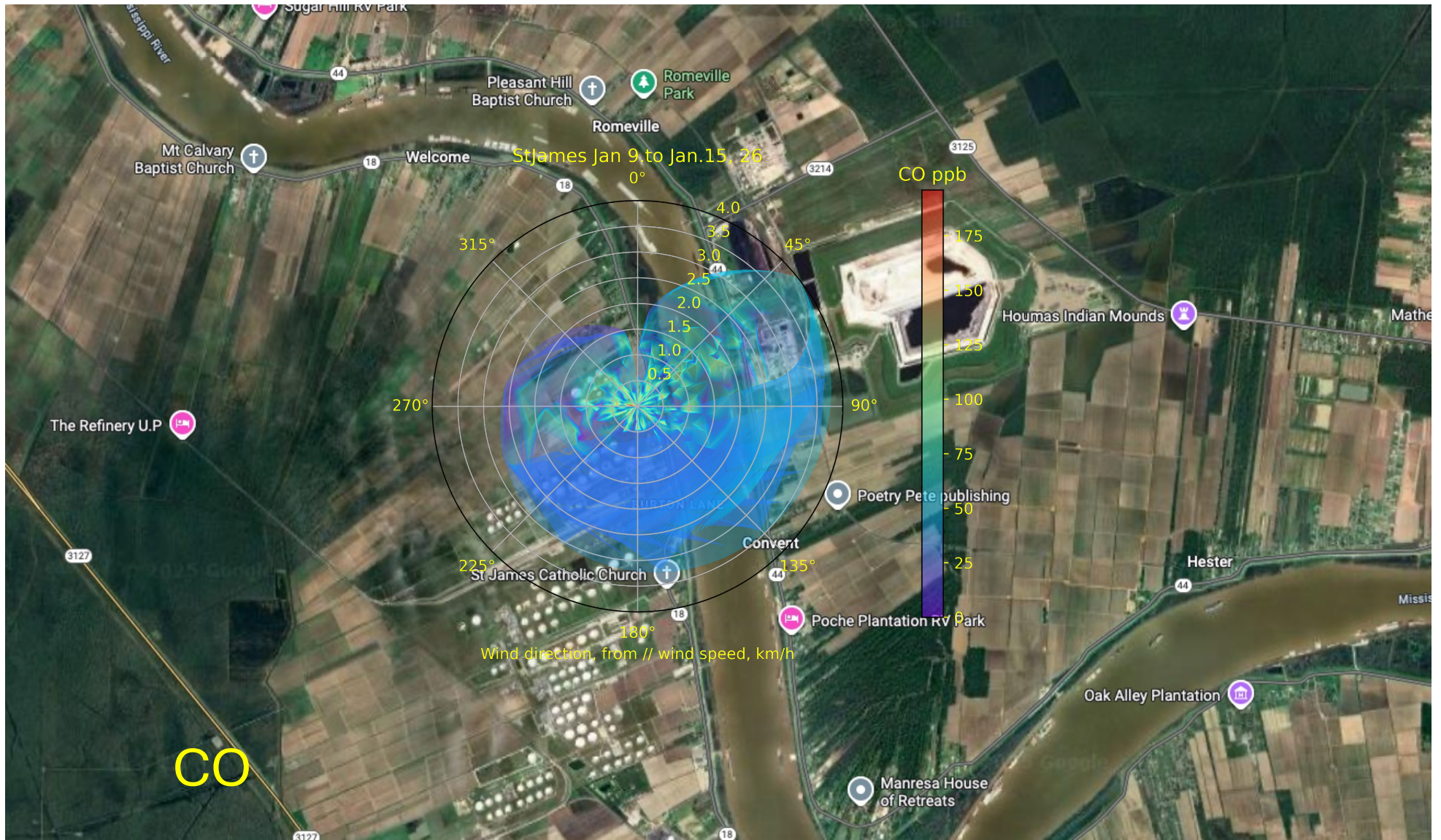


ug/m ³	Mean	Median	Q1	Q3	Min	Max	# points
PM ₁ 4 to 8	-0.9	-0.9	-2.0	-0.1	-2.4	1.4	112
PM ₁ 8 to 11	-1.0	-1.2	-2.1	0.0	-2.3	2.5	84
PM ₁ 11 to 16	-1.3	-1.5	-2.1	-0.8	-2.3	4.5	140
PM ₁ 16 to 19	-1.2	-1.0	-2.1	-0.4	-2.2	0.7	84
PM ₁ 19 to 4	-0.6	-1.2	-1.7	-0.3	-2.3	6.6	252

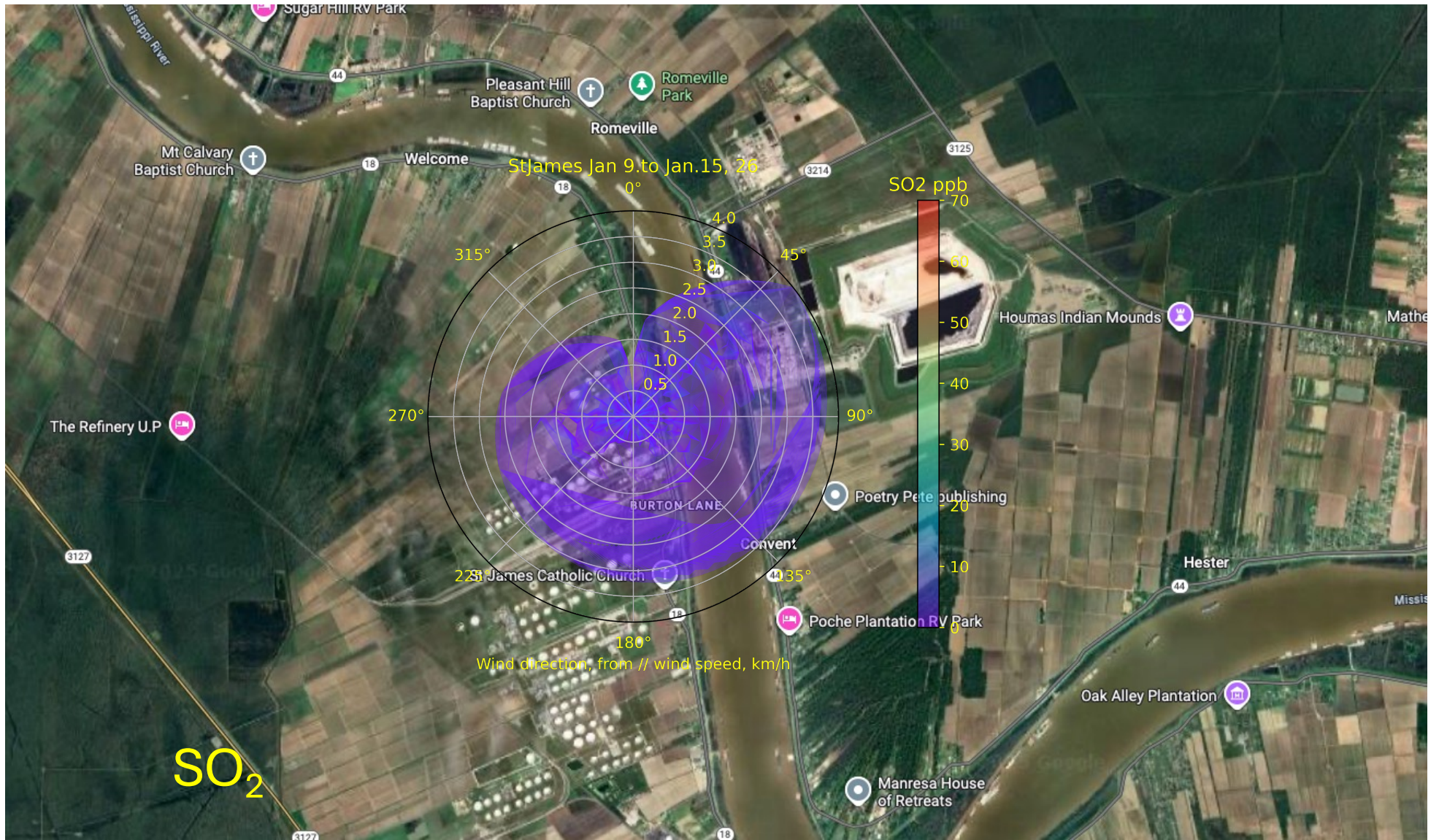


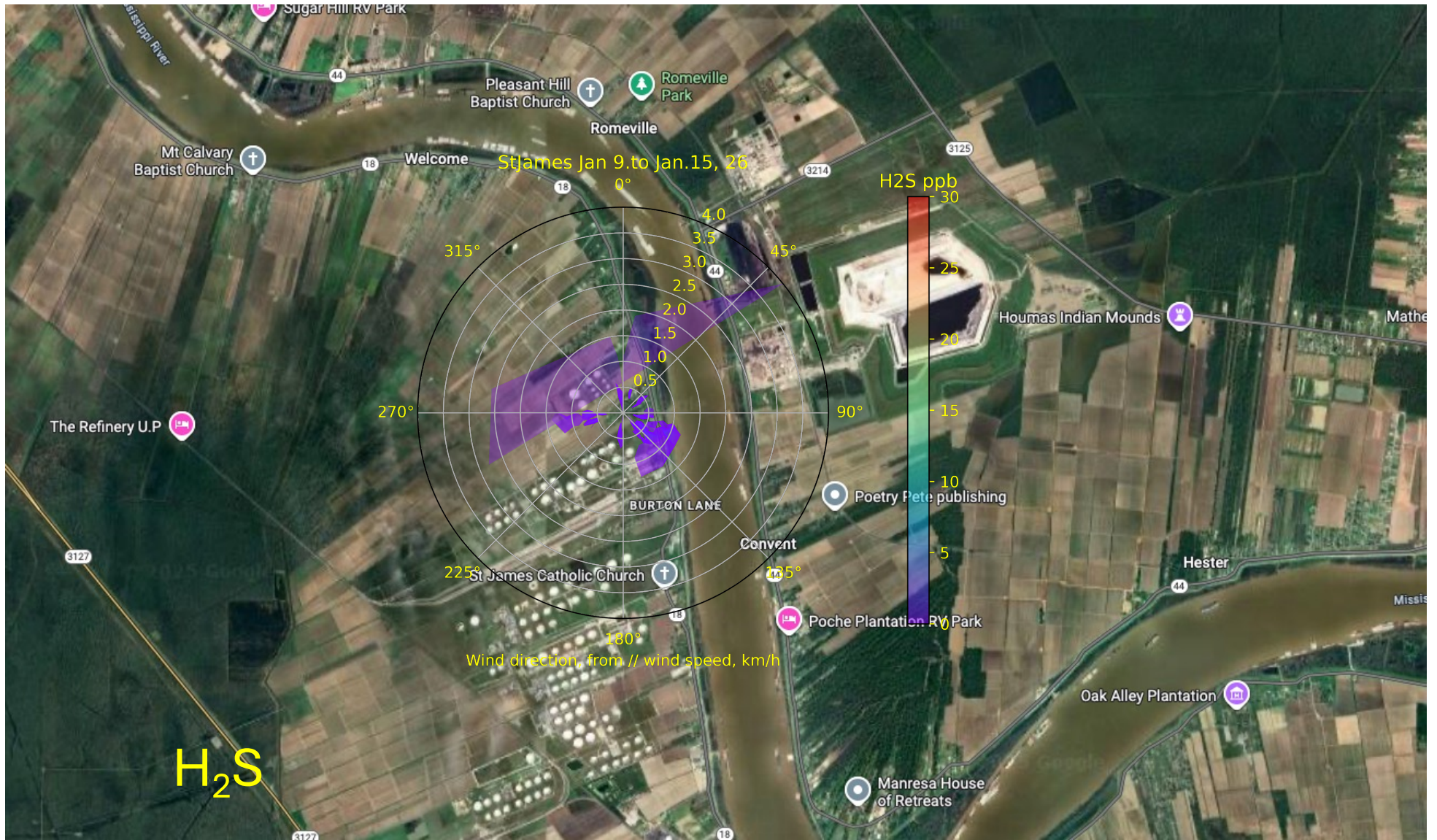
ug/m ³	Mean	Median	Q1	Q3	Min	Max	# points
PM ₁₀ 4 to 8	5.5	4.1	2.1	10.3	1.4	16.1	112
PM ₁₀ 8 to 11	5.1	4.1	2.0	7.4	1.6	16.0	84
PM ₁₀ 11 to 16	4.5	3.1	2.3	4.9	1.6	22.7	140
PM ₁₀ 16 to 19	5.1	4.1	2.1	6.6	1.7	15.4	84
PM ₁₀ 19 to 4	6.4	3.8	2.6	11.3	1.6	22.7	252

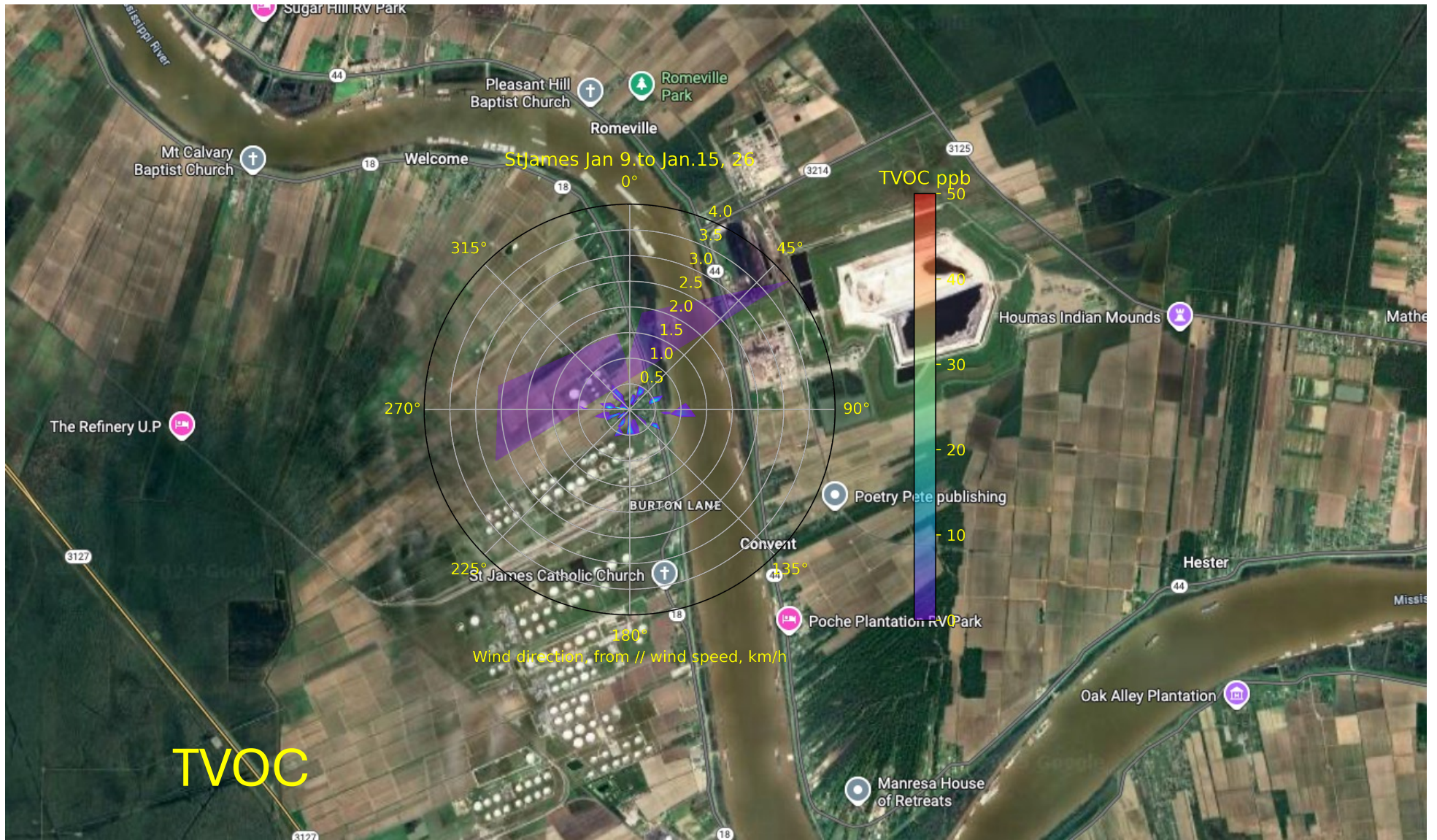
PM₁ data is not referenced and calibrated against regulatory monitor

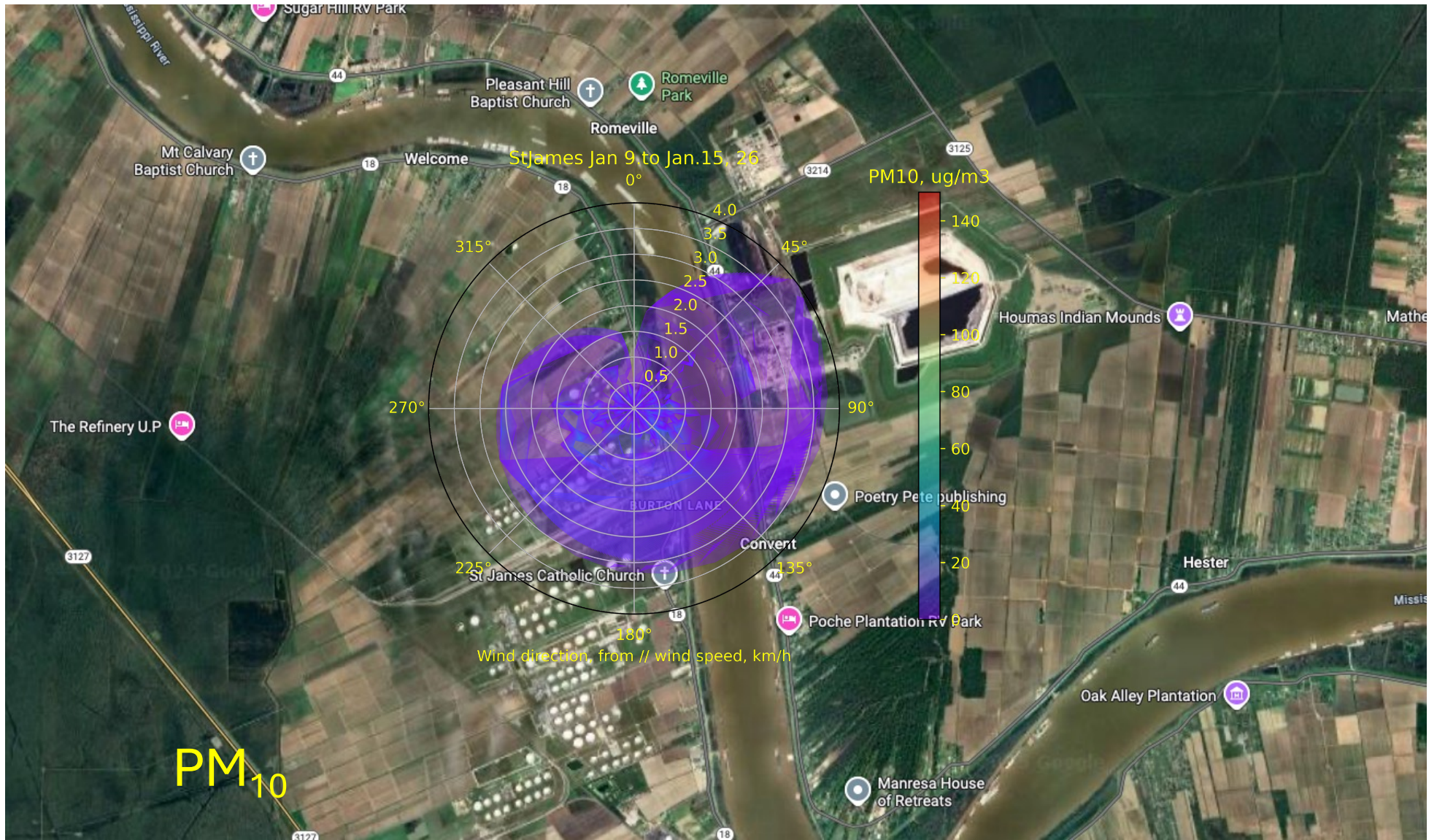


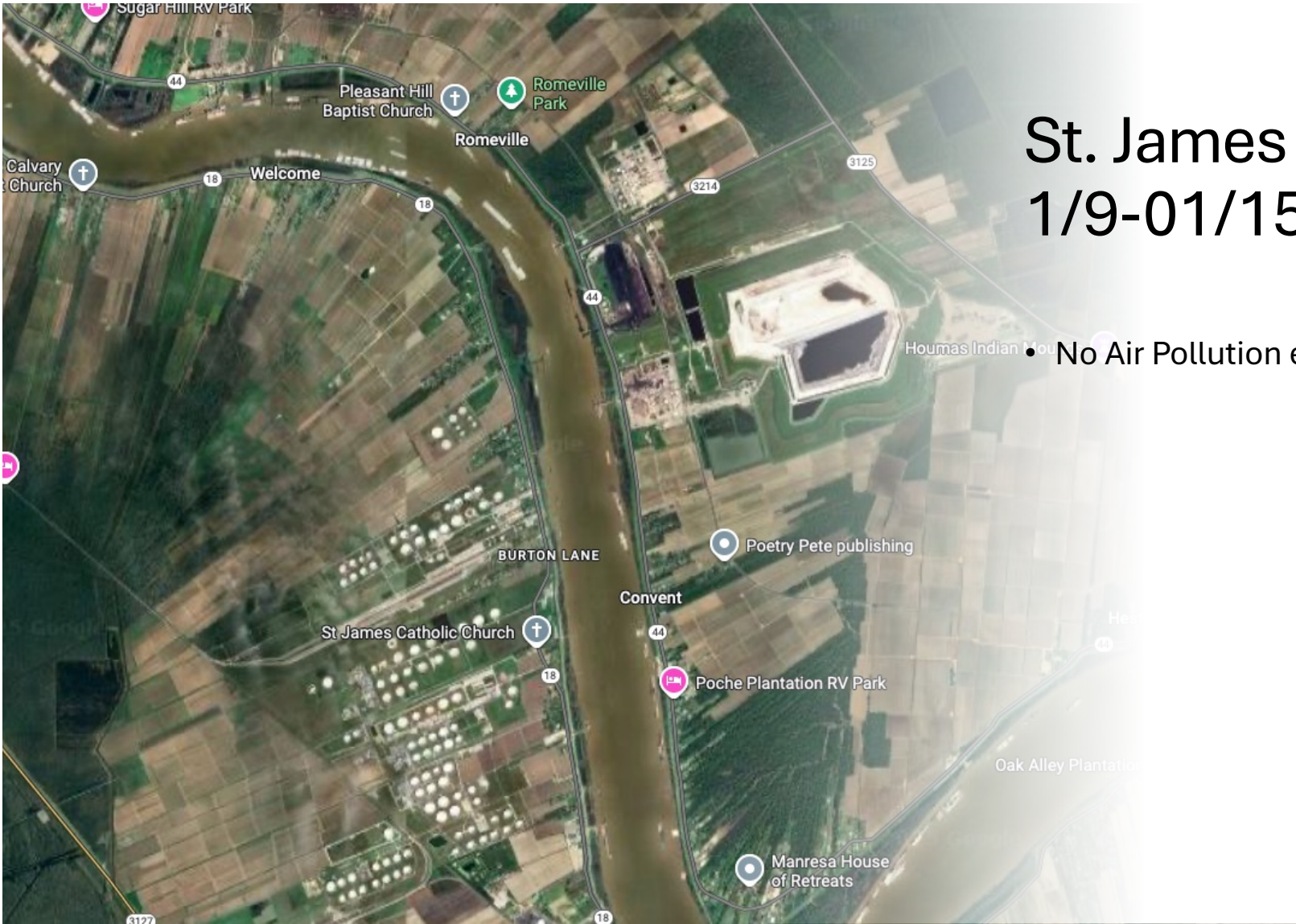












St. James POD 1/9-01/15

• No Air Pollution events