

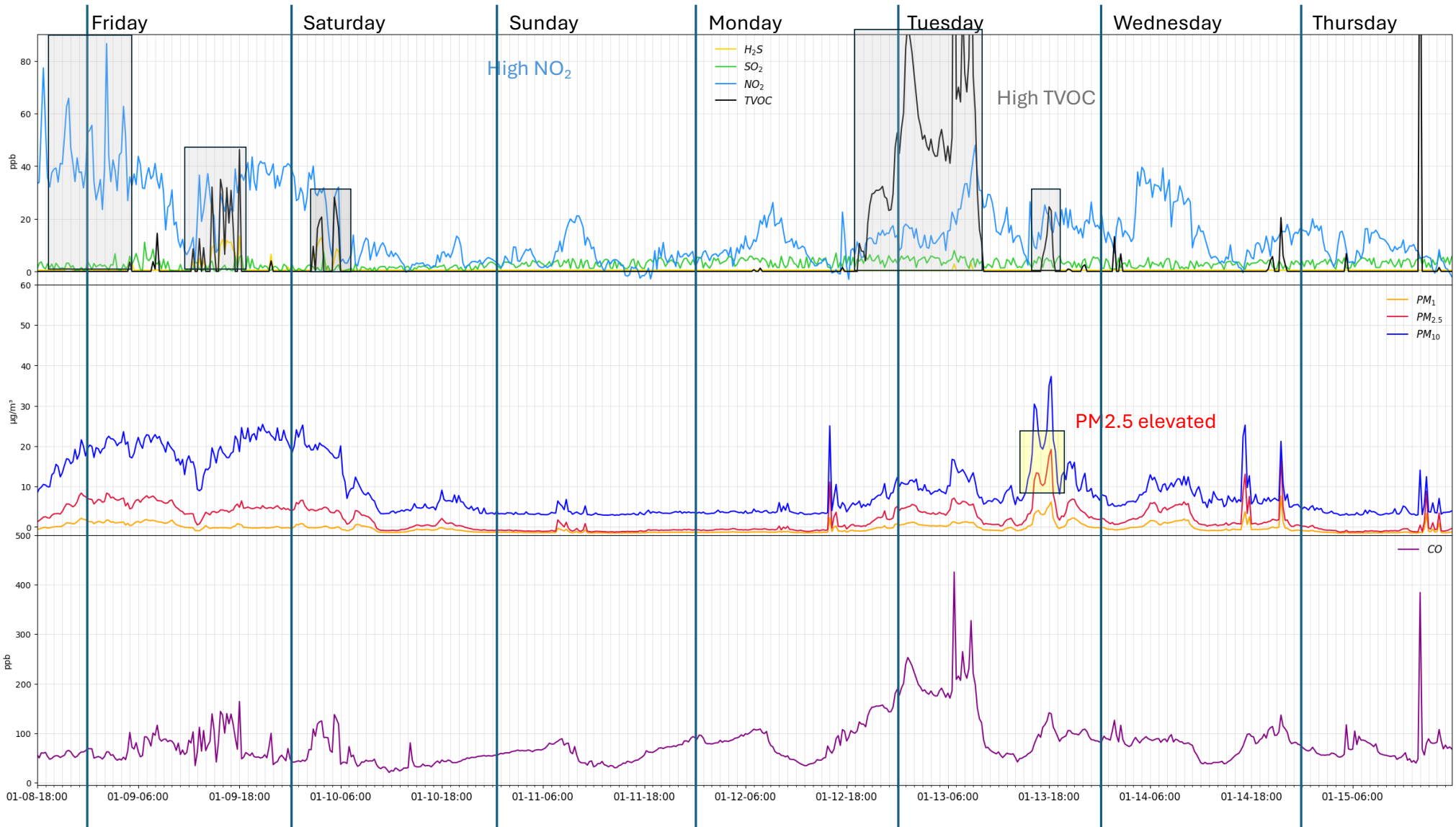
Geismar POD

January 9 - January 15, 2026

Disclaimer

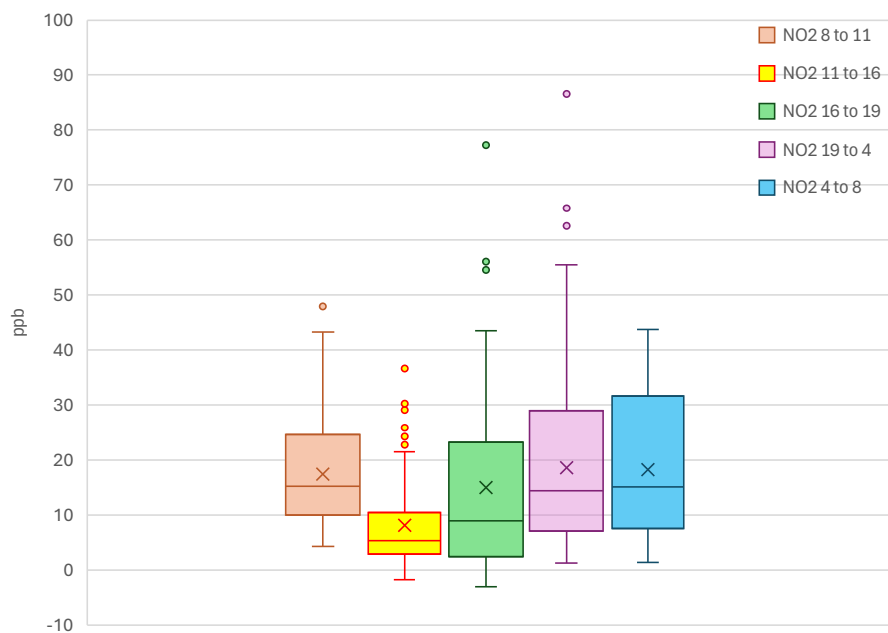
The data presented on this website were collected by non-regulatory monitors (air quality sensors) that do not meet the most current Environmental Protection Agency-approved or promulgated emission test or monitoring method. Thus, consistent with Louisiana's Community Air Monitoring Reliability Act, the data may not be used to allege violations or non-compliance with federal or State law. Rather, the data is intended for non-regulatory applications -- specifically, to better understand local air quality and to help communities to work with local companies to seek solutions to observed pollution events in a collaborative manner.

At the same time, most of the sensors are subject to QA/QC procedures and are calibrated and evaluated against official regulatory monitors.



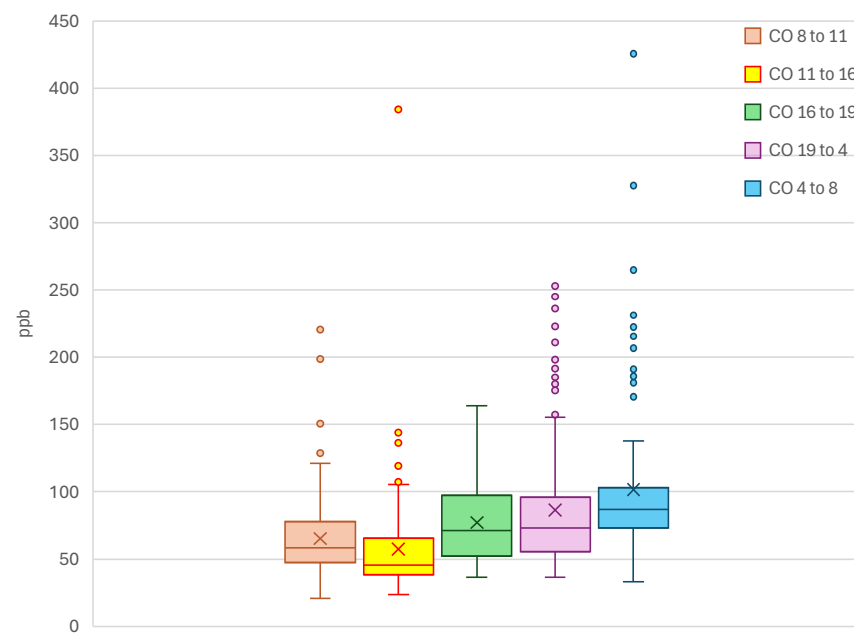
Hourly concentration distribution

NO₂ hourly distribution



ppb	Mean	Median	Q1	Q3	Min	Max	# points
NO ₂ 4 to 8	18.4	15.1	7.6	31.7	1.5	43.7	112
NO ₂ 8 to 11	17.5	15.3	10.1	24.7	4.4	48.0	84
NO ₂ 11 to 16	8.2	5.4	3.0	10.5	-1.7	37.2	140
NO ₂ 16 to 19	15.1	9.0	2.5	23.3	-3.0	77.3	84
NO ₂ 19 to 4	18.6	14.5	7.1	29.5	1.4	86.6	252

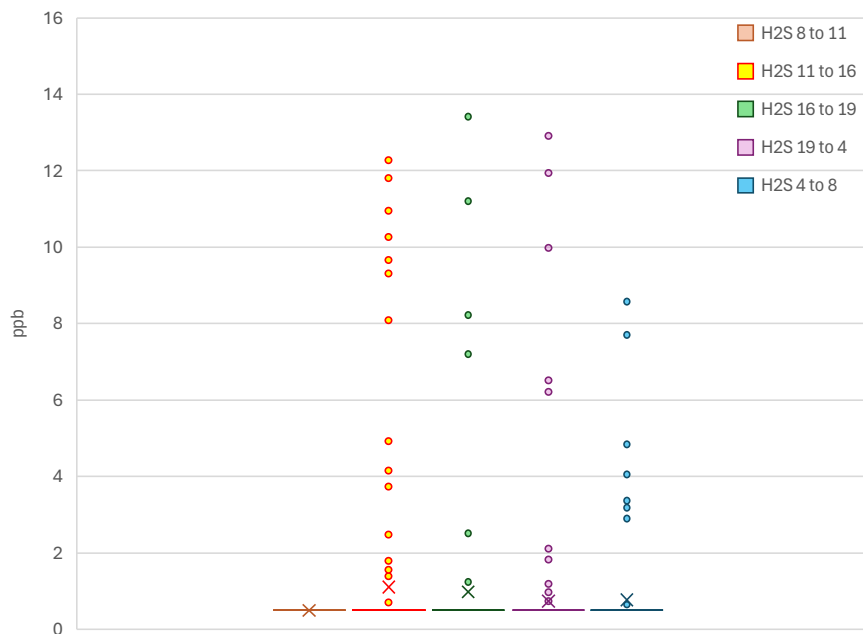
CO hourly distribution



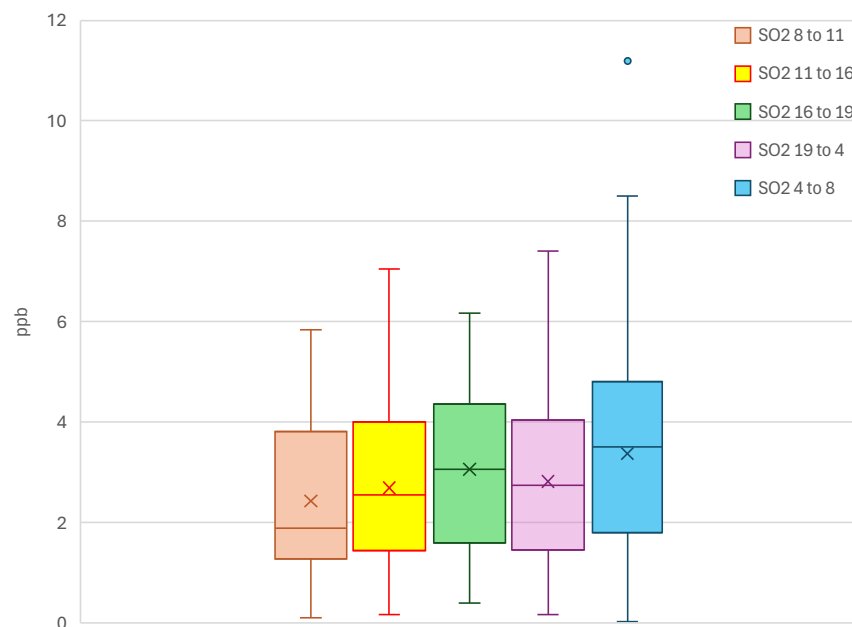
ppb	Mean	Median	Q1	Q3	Min	Max	# points
CO 4 to 8	101.8	86.9	73.0	103.2	33.3	425.3	112
CO 8 to 11	65.3	58.6	47.4	77.9	20.9	220.5	84
CO 11 to 16	57.3	45.4	38.3	65.3	23.5	384.1	140
CO 16 to 19	77.1	71.3	52.1	97.1	36.7	164.0	84
CO 19 to 4	86.5	73.2	55.7	96.2	36.6	253.0	252

Hourly concentration distribution

H₂S hourly distribution



SO₂ hourly distribution



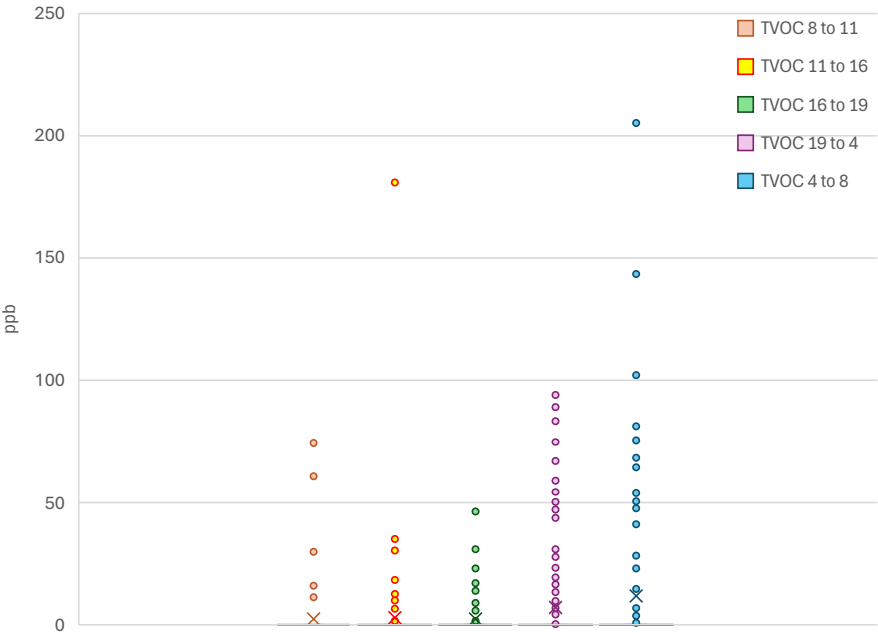
ppb	Mean	Median	Q1	Q3	Min	Max	# points
H ₂ S 4 to 8	0.8	0.5	0.5	0.5	0.5	8.6	112
H ₂ S 8 to 11	0.5	0.5	0.5	0.5	0.5	0.5	84
H ₂ S 11 to 16	1.1	0.5	0.5	0.5	0.5	12.3	140
H ₂ S 16 to 19	1.0	0.5	0.5	0.5	0.5	13.4	84
H ₂ S 19 to 4	0.7	0.5	0.5	0.5	0.5	12.9	252

ppb	Mean	Median	Q1	Q3	Min	Max	# points
SO ₂ 4 to 8	3.4	3.5	1.8	4.8	0.0	11.2	112
SO ₂ 8 to 11	2.4	1.9	1.3	3.8	0.1	5.8	84
SO ₂ 11 to 16	2.7	2.5	1.4	4.0	0.2	7.1	140
SO ₂ 16 to 19	3.1	3.1	1.6	4.4	0.4	6.2	84
SO ₂ 19 to 4	2.8	2.7	1.4	4.0	0.2	7.4	252

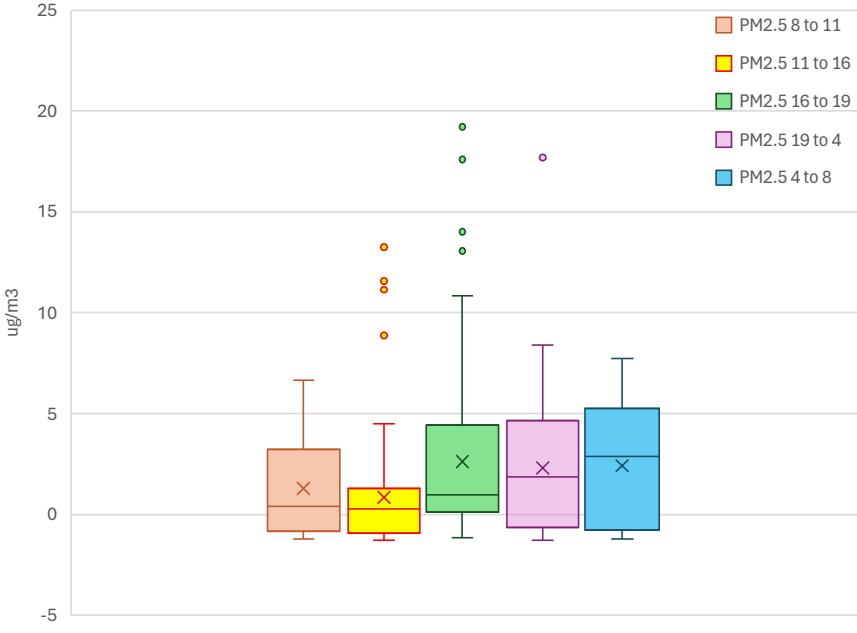
H₂S data is not referenced and calibrated against regulatory monitor

Hourly concentration distribution

TVOC hourly distribution



PM_{2.5} hourly distribution

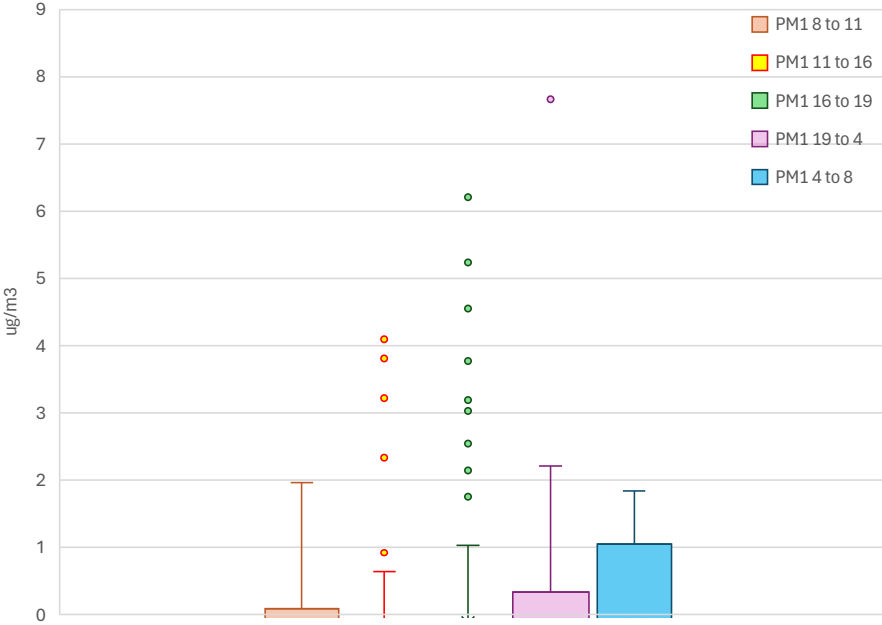


ppb	Mean	Median	Q1	Q3	Min	Max	# points
TVOC 4 to 8	11.7	0.1	0.1	0.1	0.1	205.2	112
TVOC 8 to 11	2.4	0.1	0.1	0.1	0.1	74.4	84
TVOC 11 to 16	2.8	0.1	0.1	0.1	0.1	180.9	140
TVOC 16 to 19	2.4	0.1	0.1	0.1	0.1	46.3	84
TVOC 19 to 4	7.0	0.1	0.1	0.1	0.1	94.0	252

ug/m ³	Mean	Median	Q1	Q3	Min	Max	# points
PM _{2.5} 4 to 8	2.4	2.9	-0.8	5.3	-1.2	7.7	112
PM _{2.5} 8 to 11	1.3	0.4	-0.8	3.2	-1.2	6.7	84
PM _{2.5} 11 to 16	0.8	0.3	-0.9	1.3	-1.3	13.4	140
PM _{2.5} 16 to 19	2.6	1.0	0.1	4.4	-1.1	19.2	84
PM _{2.5} 19 to 4	2.3	1.9	-0.6	4.7	-1.3	17.7	252

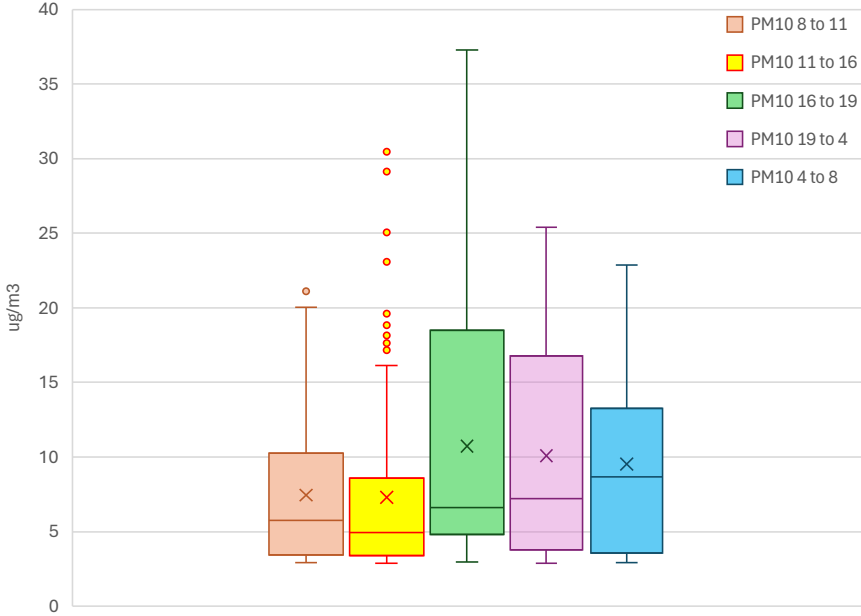
Hourly concentration distribution

PM₁ hourly distribution



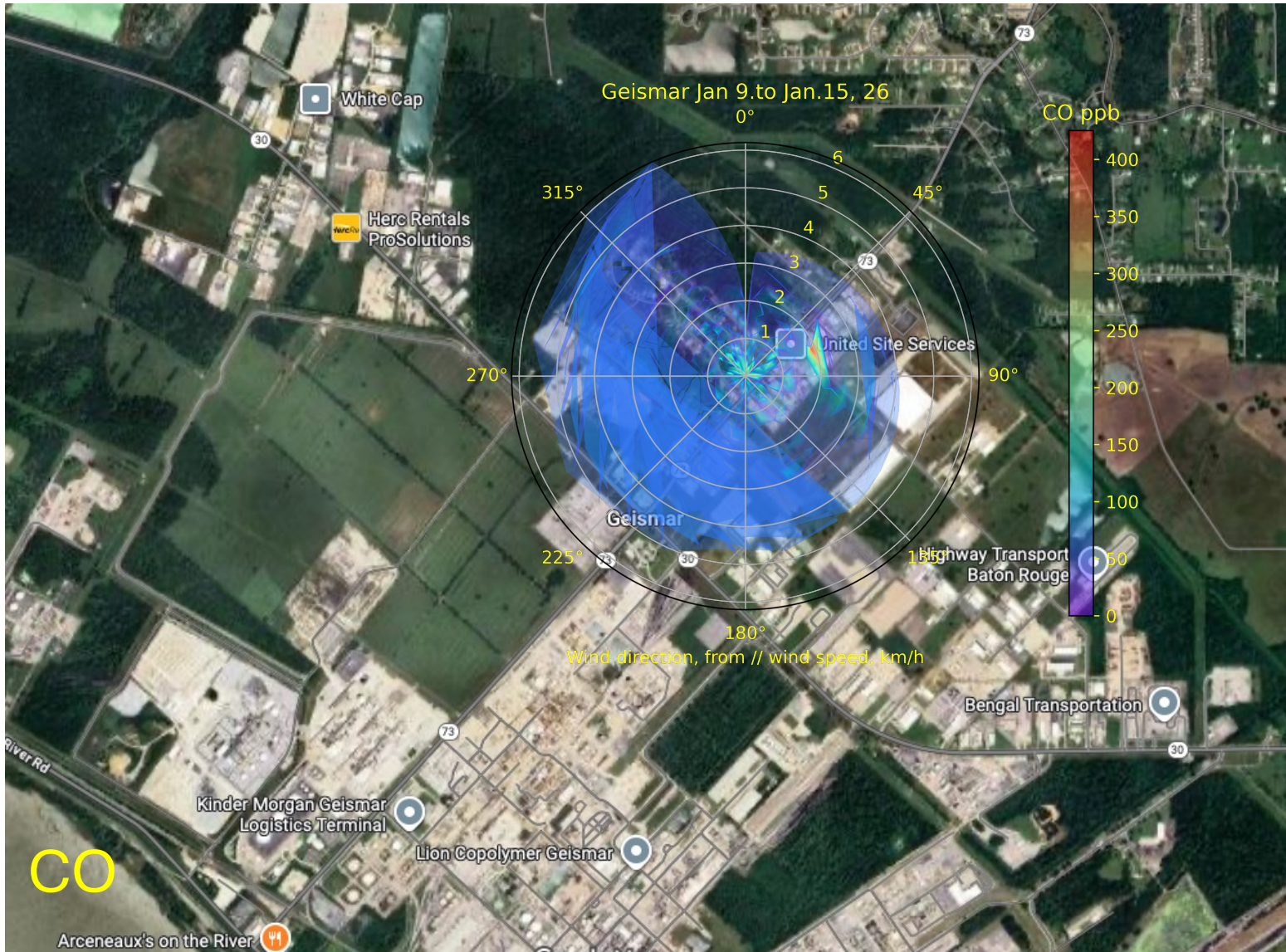
ug/m ³	Mean	Median	Q1	Q3	Min	Max	# points
PM ₁ 4 to 8	-0.2	-0.3	-1.3	1.1	-1.5	1.8	112
PM ₁ 8 to 11	-0.5	-0.9	-1.3	0.1	-1.5	2.0	84
PM ₁ 11 to 16	-0.8	-0.9	-1.4	-0.5	-1.5	4.1	140
PM ₁ 16 to 19	-0.1	-0.5	-1.0	-0.1	-1.5	6.2	84
PM ₁ 19 to 4	-0.3	-0.3	-1.3	0.4	-1.5	7.7	252

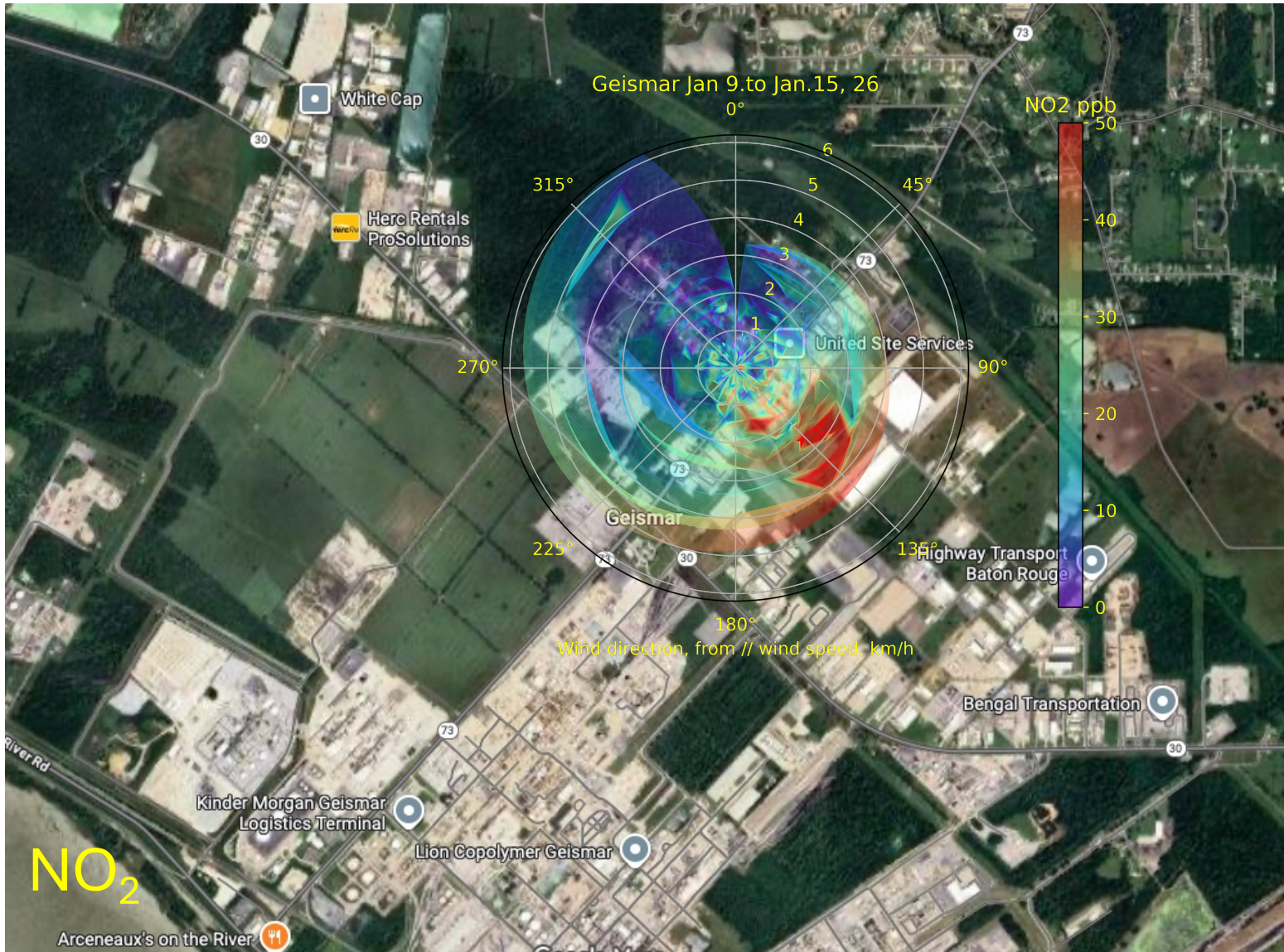
PM₁₀ hourly distribution

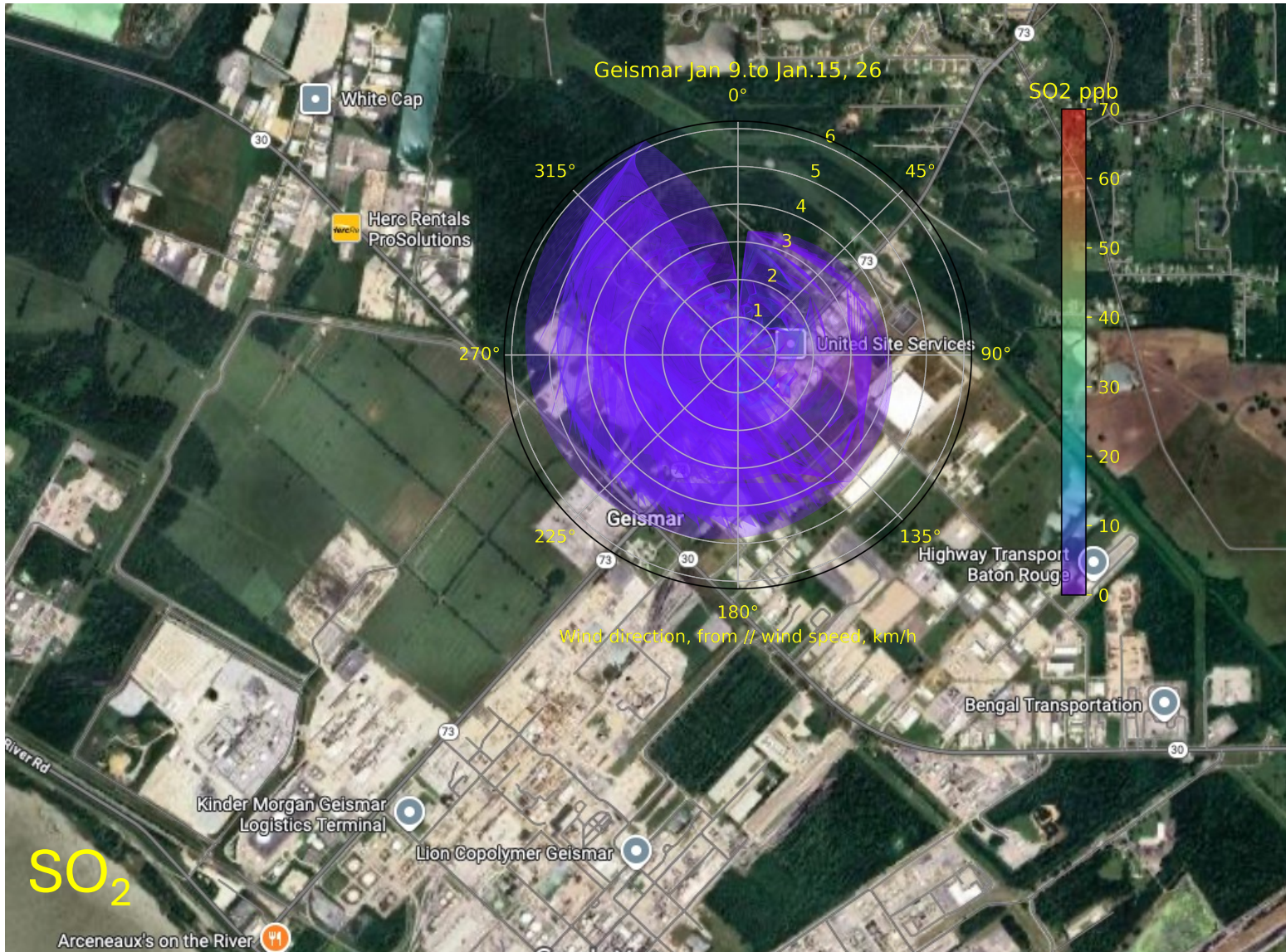


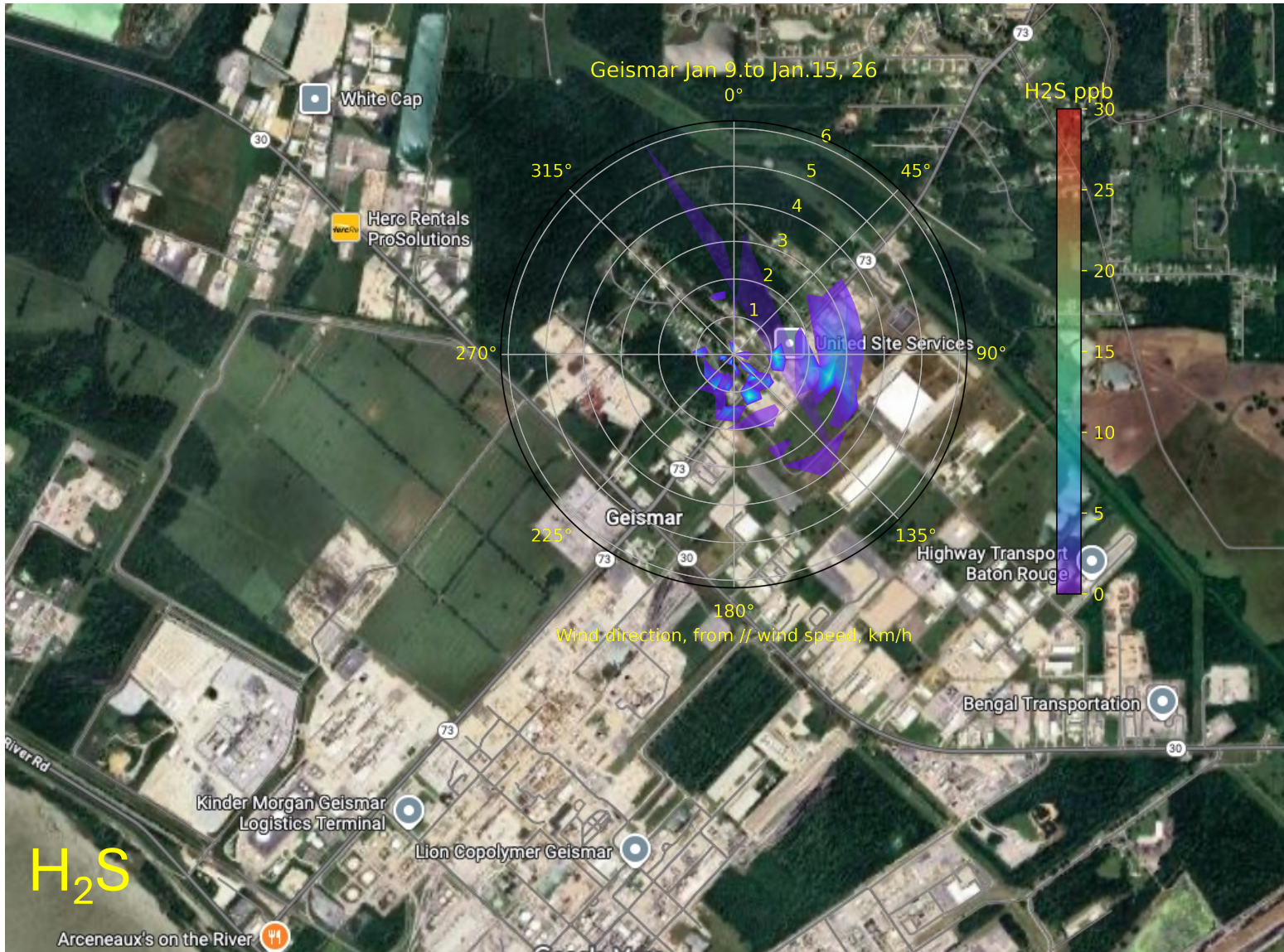
ug/m ³	Mean	Median	Q1	Q3	Min	Max	# points
PM ₁₀ 4 to 8	9.5	8.7	3.6	13.3	2.9	22.9	112
PM ₁₀ 8 to 11	7.5	5.7	3.4	10.3	2.9	21.1	84
PM ₁₀ 11 to 16	7.3	5.0	3.4	8.6	2.9	30.4	140
PM ₁₀ 16 to 19	10.7	6.6	4.8	18.5	3.0	37.3	84
PM ₁₀ 19 to 4	10.1	7.2	3.8	16.9	2.9	25.4	252

PM₁ data is not referenced and calibrated against regulatory monitor



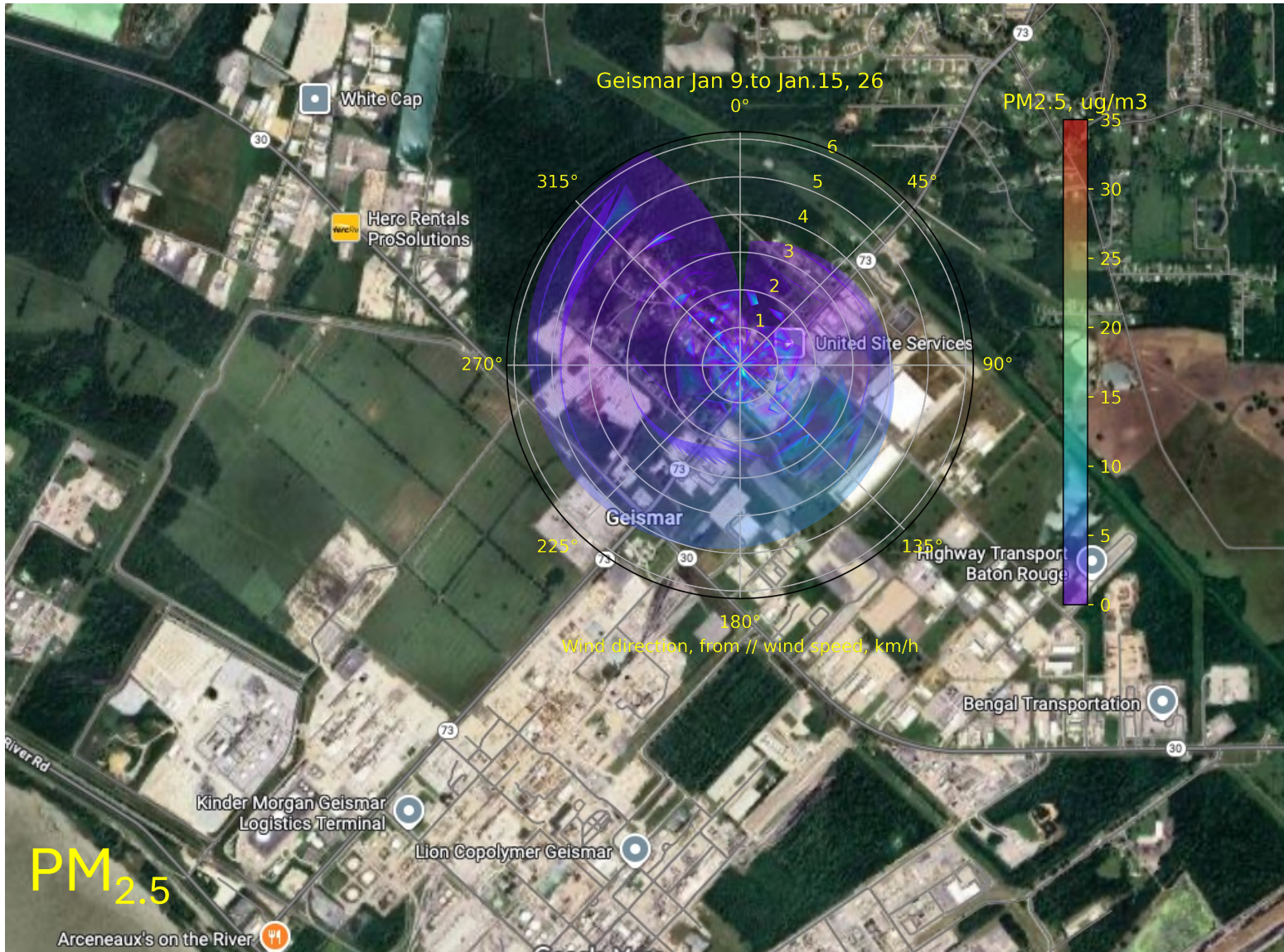


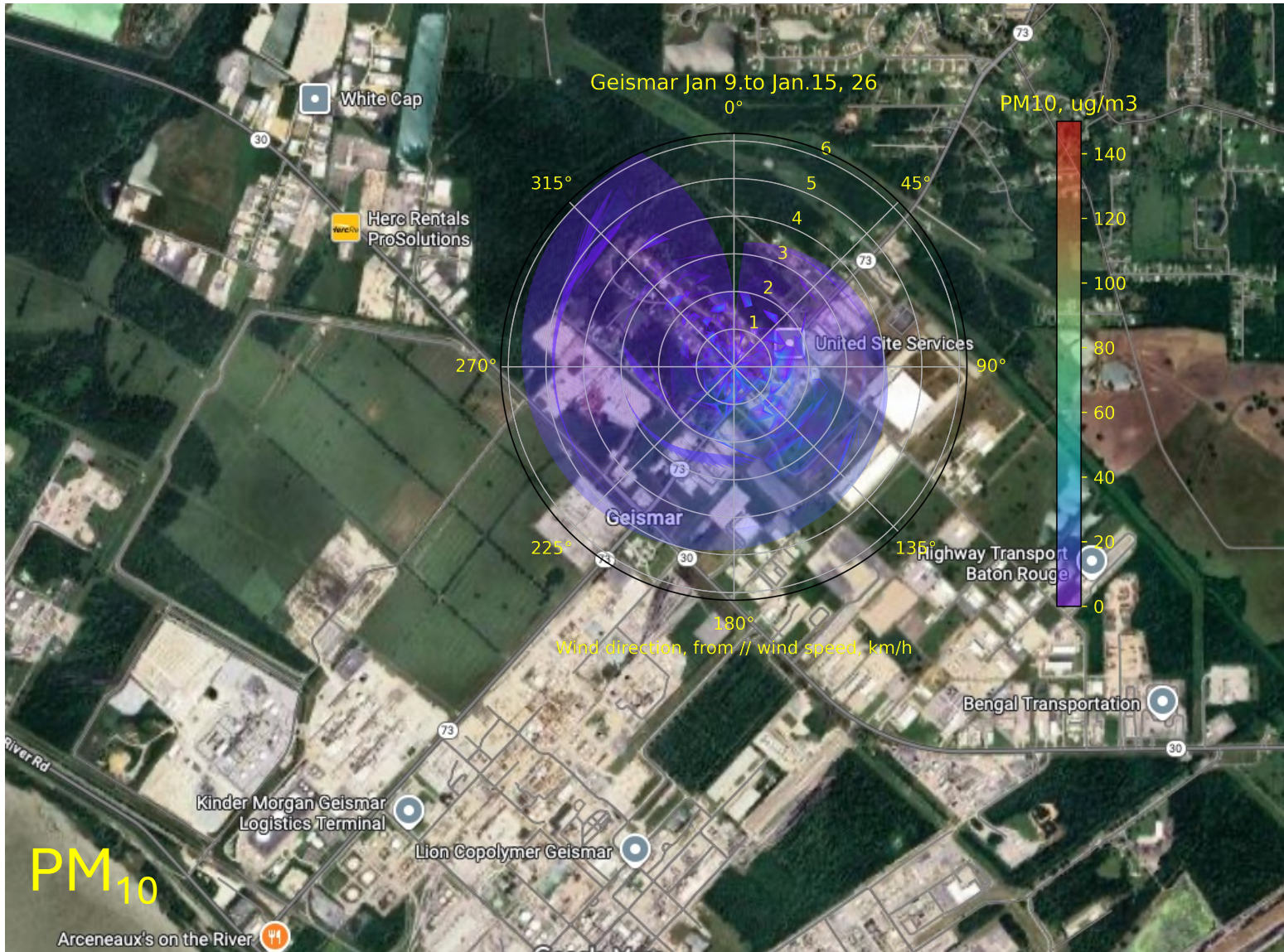












GEISMAR POD

1/9-1/15

- TVOC is associated with winds from the East

