

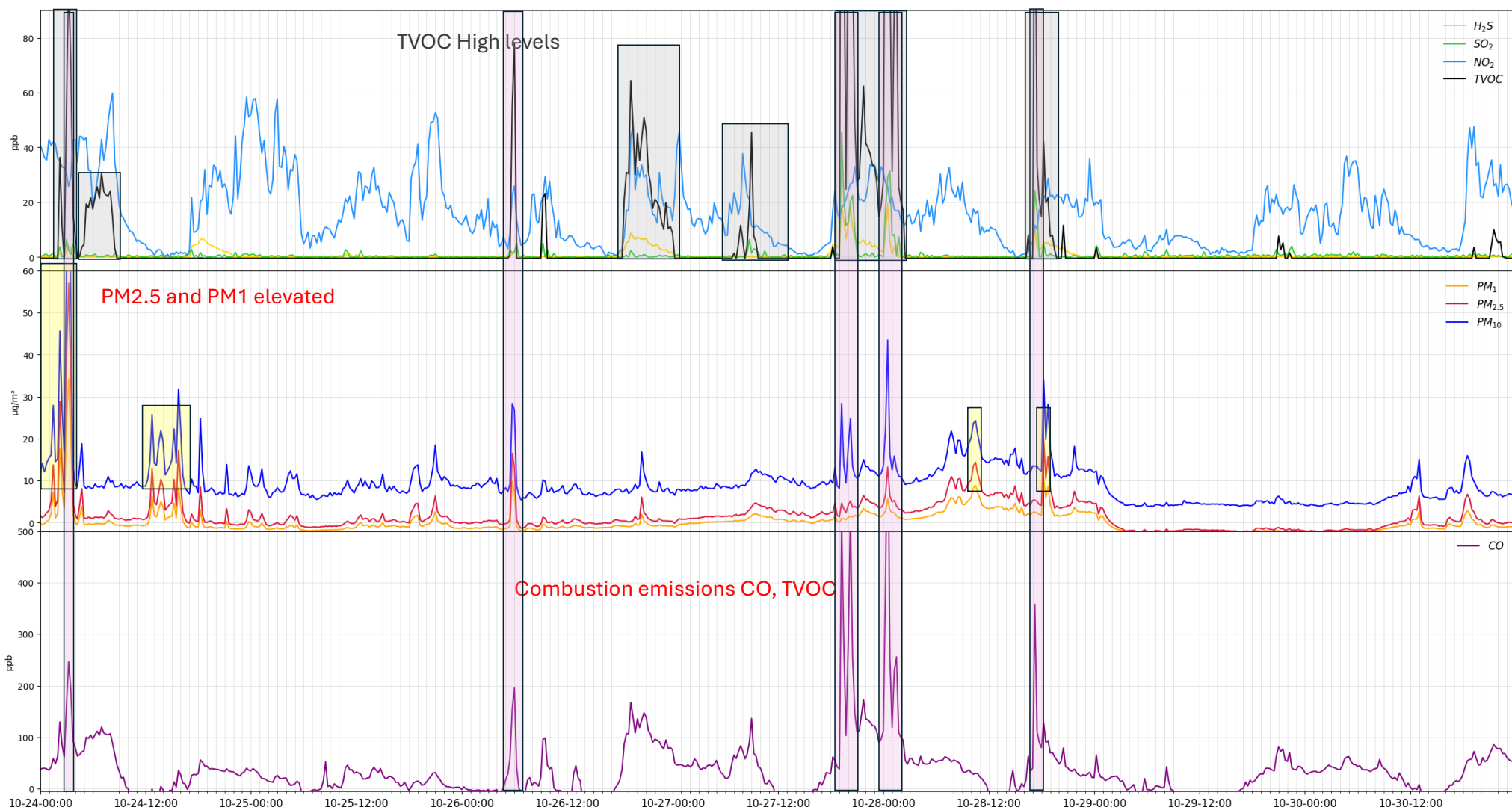
Donaldsonville POD

October 24 - 30, 2025

Disclaimer

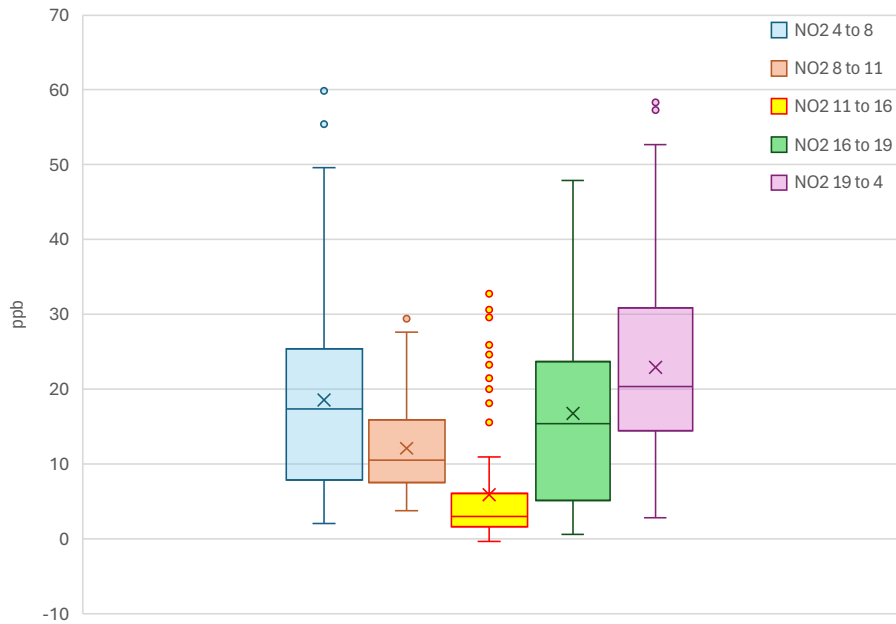
The data presented on this website were collected by non-regulatory monitors (air quality sensors) that do not meet the most current Environmental Protection Agency-approved or promulgated emission test or monitoring method. Thus, consistent with Louisiana's Community Air Monitoring Reliability Act, the data may not be used to allege violations or non-compliance with federal or State law. Rather, the data is intended for non-regulatory applications -- specifically, to better understand local air quality and to help communities to work with local companies to seek solutions to observed pollution events in a collaborative manner.

At the same time, most of the sensors are subject to QA/QC procedures and are calibrated and evaluated against official regulatory monitors.



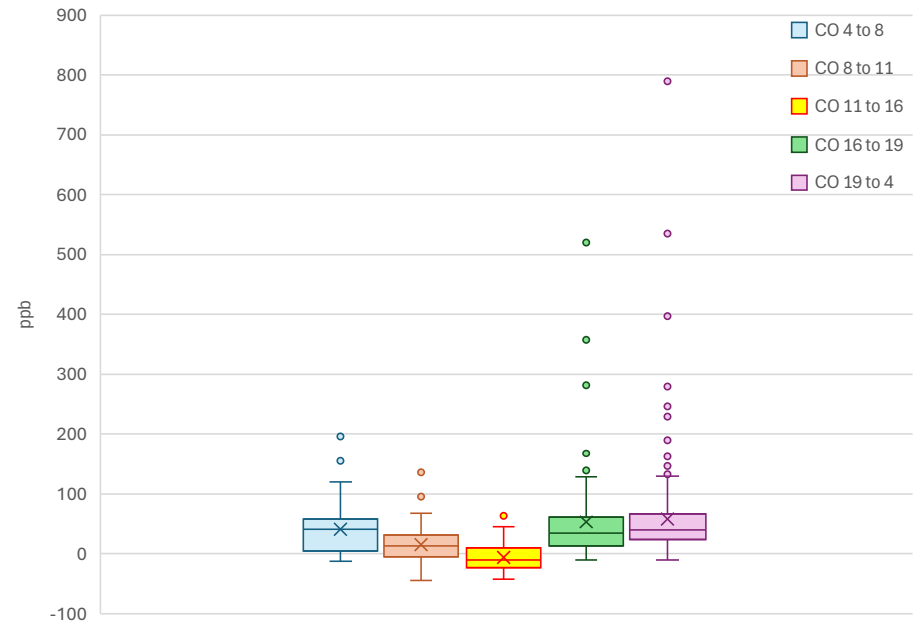
Hourly concentration distribution

NO2 hourly distribution



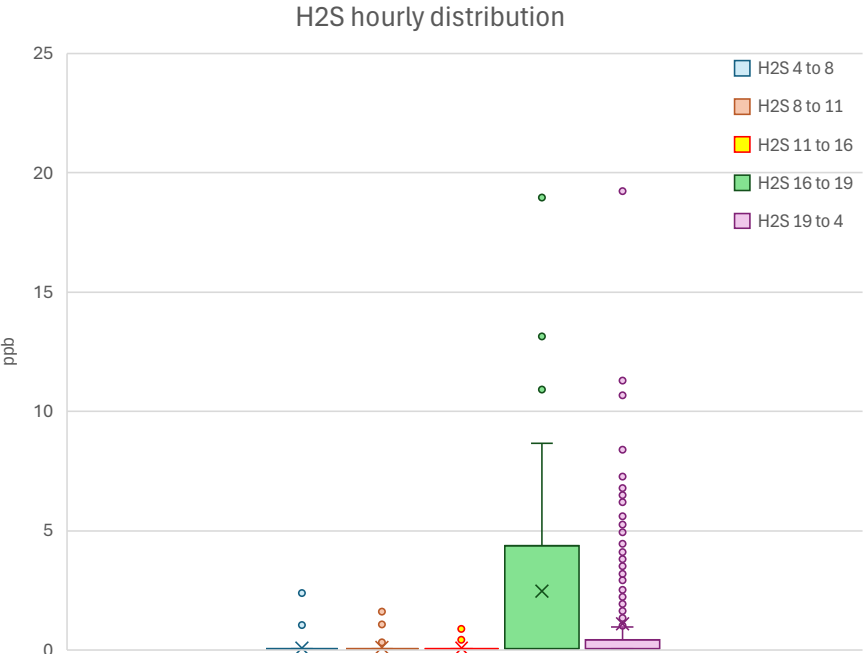
ppb	Mean	Median	Q1	Q3	Min	Max	# points
NO2 4 to 8	18.6	17.4	7.9	25.6	2.1	59.9	112
NO2 8 to 11	12.1	10.5	7.5	15.9	3.8	29.4	84
NO2 11 to 16	5.9	3.0	1.7	6.1	-0.3	32.7	140
NO2 16 to 19	16.8	15.4	5.1	23.7	0.6	47.9	84
NO2 19 to 4	22.9	20.3	14.4	30.9	2.8	58.3	252

CO hourly distribution

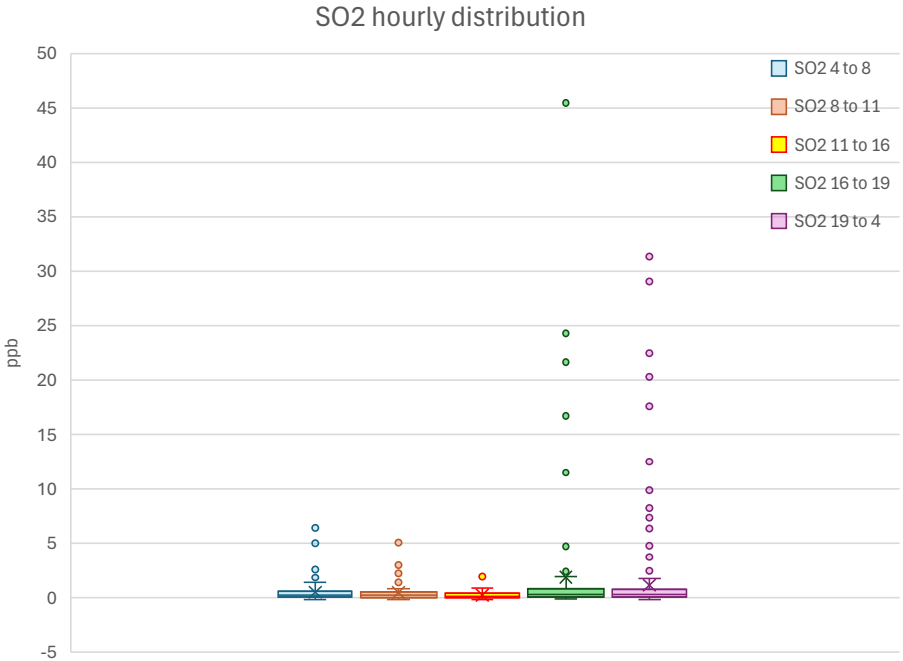


ppb	Mean	Median	Q1	Q3	Min	Max	# points
CO 4 to 8	41.2	41.1	5.1	58.6	-12.1	195.7	112
CO 8 to 11	15.1	13.2	-5.0	31.3	-44.0	136.5	84
CO 11 to 16	-5.7	-10.1	-23.0	9.9	-42.1	63.3	140
CO 16 to 19	53.3	34.2	13.5	61.1	-10.0	519.8	84
CO 19 to 4	58.0	39.8	23.3	67.7	-10.7	789.8	252

Hourly concentration distribution



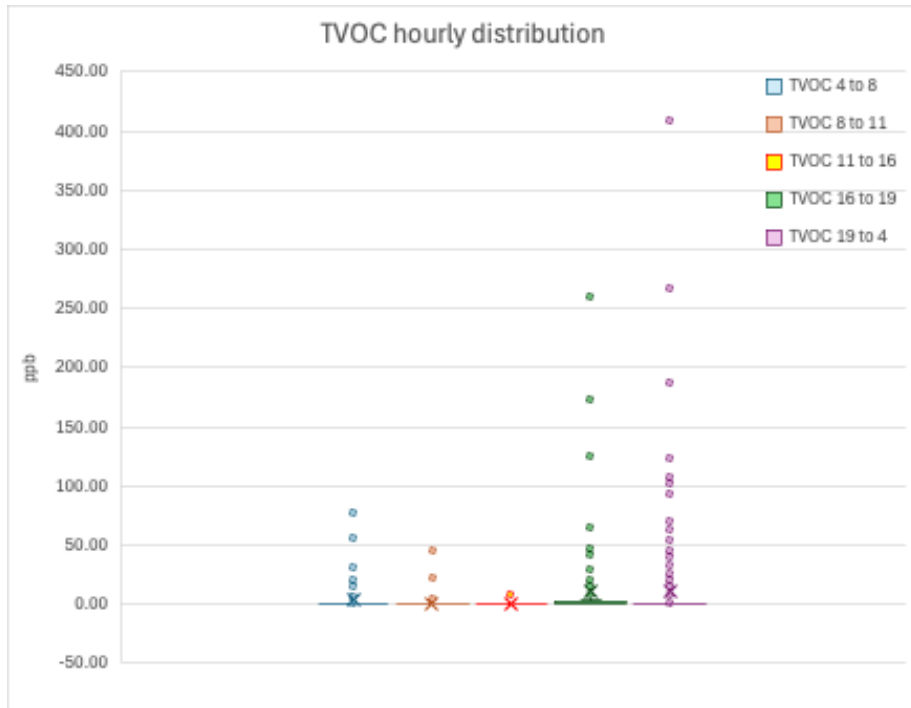
ppb	Mean	Median	Q1	Q3	Min	Max	# points
H2S 4 to 8	0.1	0.1	0.1	0.0	0.0	2.4	112
H2S 8 to 11	0.1	0.1	0.1	0.1	0.1	1.6	84
H2S 11 to 16	0.1	0.1	0.1	0.1	0.1	0.9	140
H2S 16 to 19	2.5	0.1	0.1	4.4	0.1	19.0	84
H2S 19 to 4	1.1	0.1	0.1	0.6	0.1	19.4	252



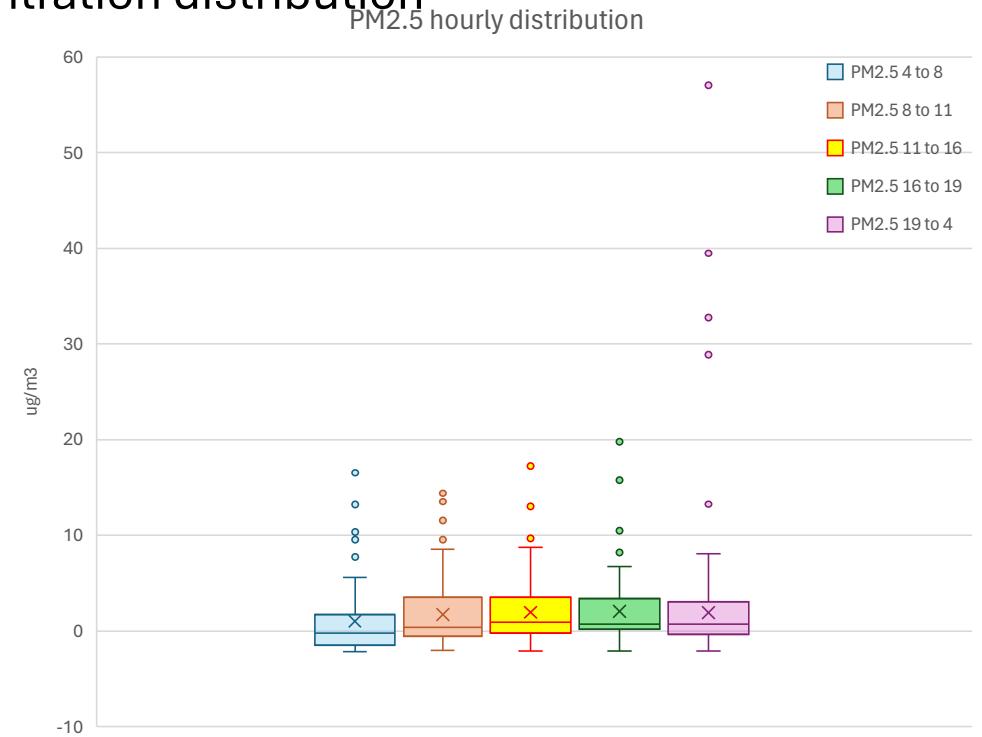
ppb	Mean	Median	Q1	Q3	Min	Max	# points
SO2 4 to 8	0.5	0.2	0.0	0.6	-0.2	6.4	112
SO2 8 to 11	0.5	0.2	0.0	0.5	-0.2	5.1	84
SO2 11 to 16	0.2	0.1	0.0	0.4	-0.2	2.3	140
SO2 16 to 19	1.9	0.3	0.1	0.8	-0.1	45.4	84
SO2 19 to 4	1.1	0.3	0.1	0.8	-0.2	31.3	252

H₂S data is not referenced and calibrated against regulatory monitor

Hourly concentration distribution



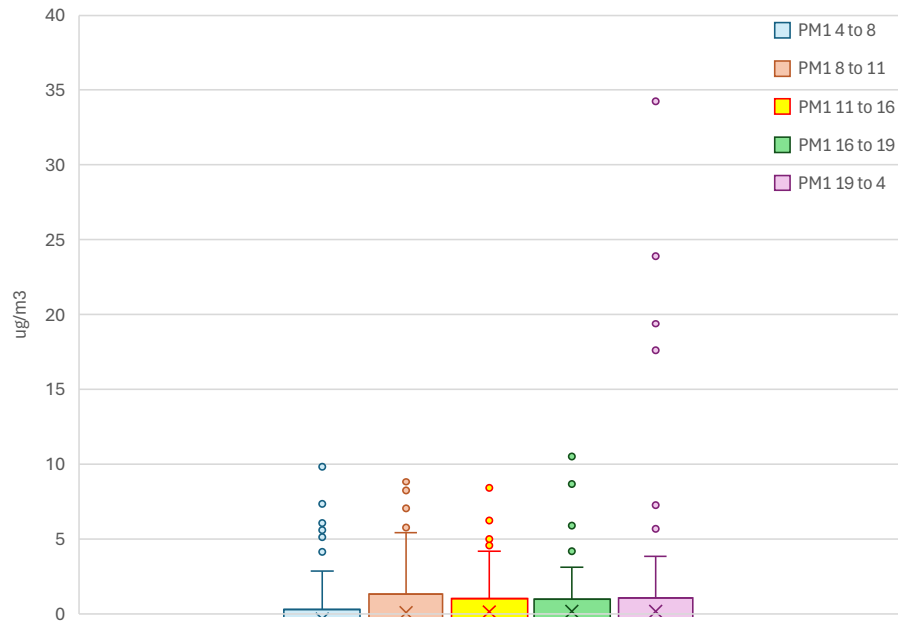
ppb	Mean	Median	Q1	Q3	Min	Max	# points
TVOC 4 to 8	3.8	-0.5	-0.5	-0.5	-0.5	78.1	112
TVOC 8 to 11	0.8	-0.5	-0.5	-0.5	-0.5	45.5	84
TVOC 11 to 16	-0.4	-0.5	-0.5	-0.5	-0.5	8.1	140
TVOC 16 to 19	11.4	-0.5	-0.5	1.9	-0.5	260.1	84
TVOC 19 to 4	10.7	-0.5	-0.5	0.3	-0.5	408.5	252



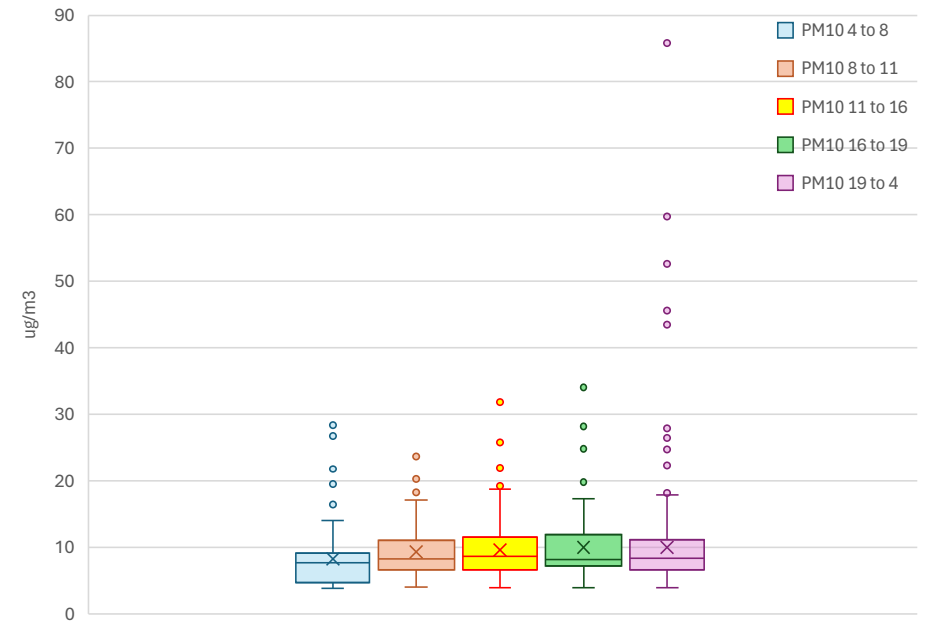
ug/m3	Mean	Median	Q1	Q3	Min	Max	# points
PM2.5 4 to 8	1.0	-0.2	-1.5	1.7	-2.2	16.5	112
PM2.5 8 to 11	1.7	0.4	-0.5	3.5	-2.0	14.4	84
PM2.5 11 to 16	1.9	0.9	-0.2	3.5	-2.1	17.2	140
PM2.5 16 to 19	2.0	0.7	0.2	3.4	-2.1	19.8	84
PM2.5 19 to 4	1.9	0.7	-0.4	3.1	-2.1	57.0	252

Hourly concentration distribution

PM1 hourly distribution



PM10 hourly distribution

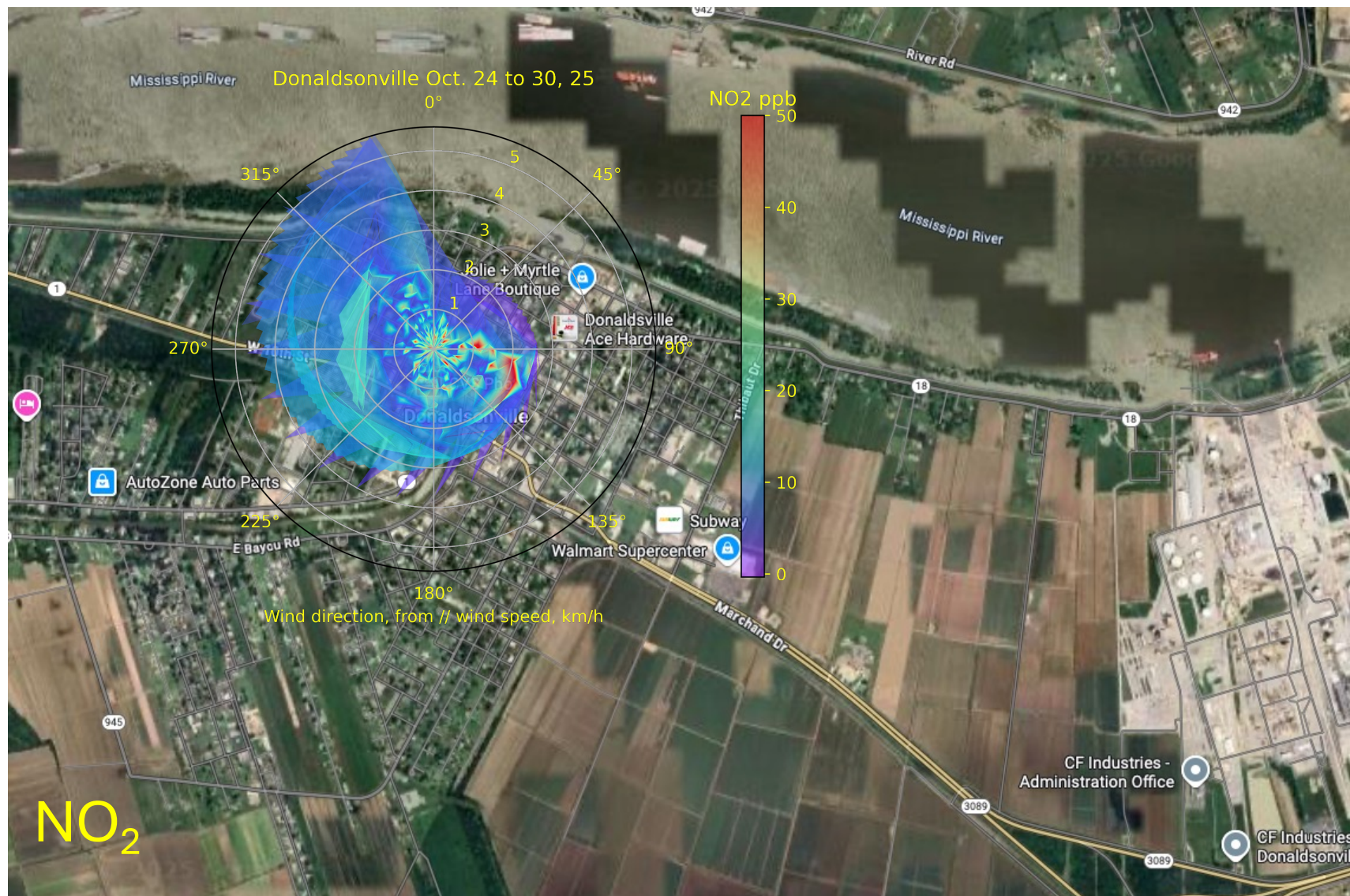


ug/m3	Mean	Median	Q1	Q3	Min	Max	# points
PM14 to 8	-0.3	-1.3	-1.9	0.3	-2.4	9.8	112
PM18 to 11	0.1	-0.8	-1.5	1.3	-2.3	8.8	84
PM111 to 16	0.1	-0.6	-1.2	1.0	-2.4	8.4	140
PM116 to 19	0.2	-0.6	-1.0	1.0	-2.4	10.5	84
PM119 to 4	0.2	-0.7	-1.4	1.1	-2.3	34.3	252

ug/m3	Mean	Median	Q1	Q3	Min	Max	# points
PM104 to 8	8.3	7.7	4.7	9.2	3.9	28.4	112
PM108 to 11	9.3	8.3	6.6	11.1	4.1	24.3	84
PM1011 to 16	9.6	8.6	6.6	11.5	3.9	31.8	140
PM1016 to 19	10.0	8.2	7.2	12.0	4.0	34.1	84
PM1019 to 4	10.0	8.4	6.6	11.2	3.9	85.8	252

PM₁ data is not referenced and calibrated against regulatory monitor



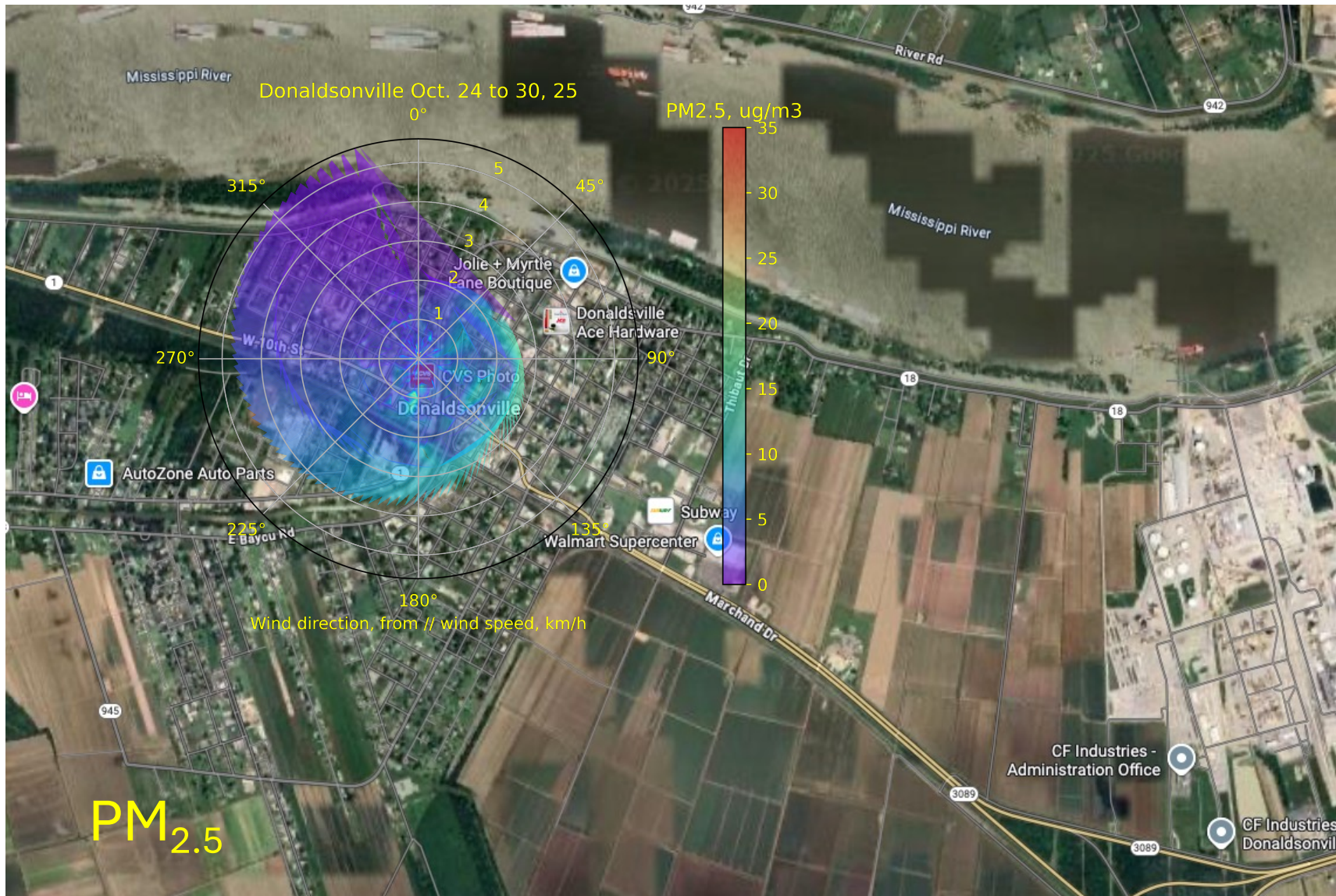


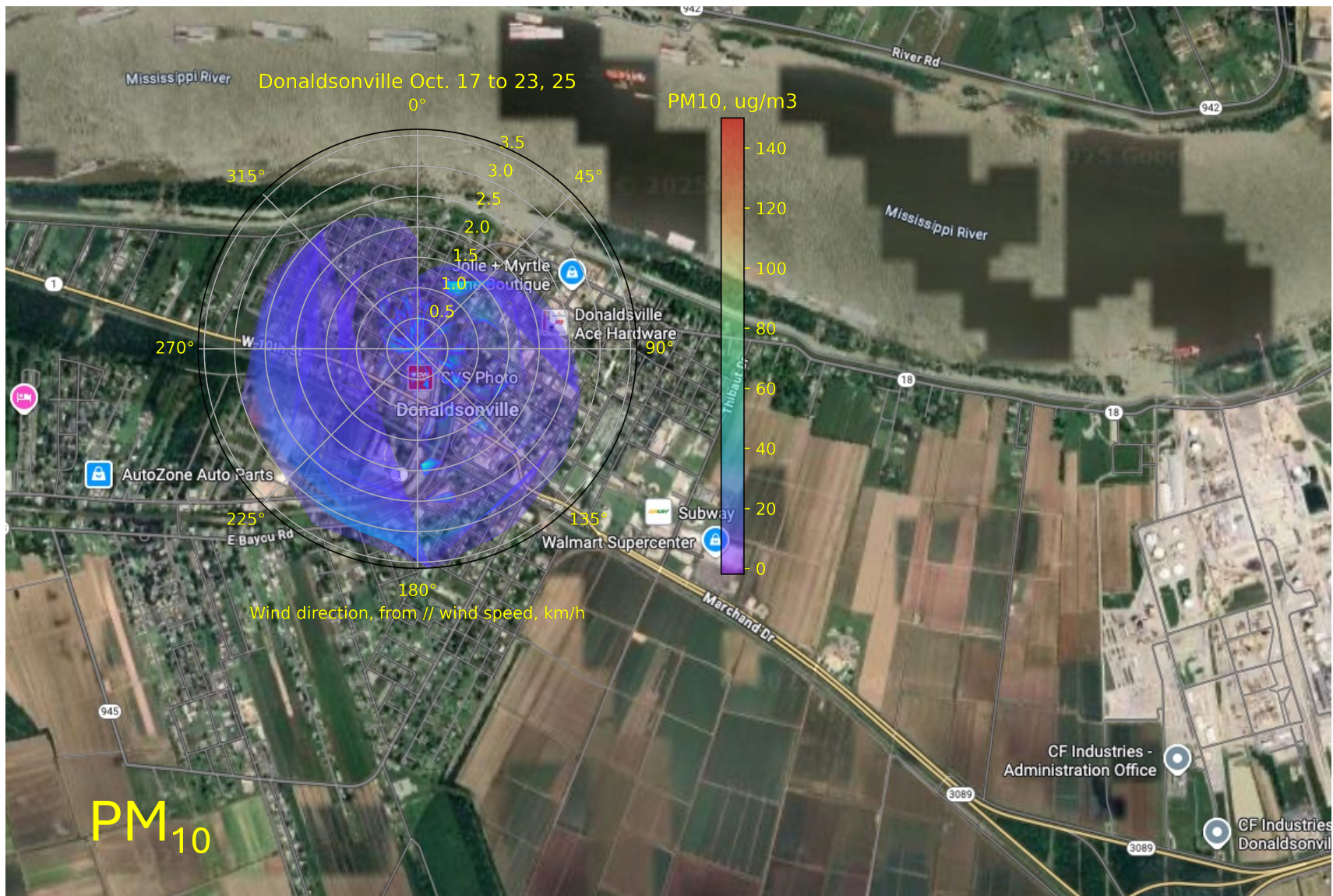


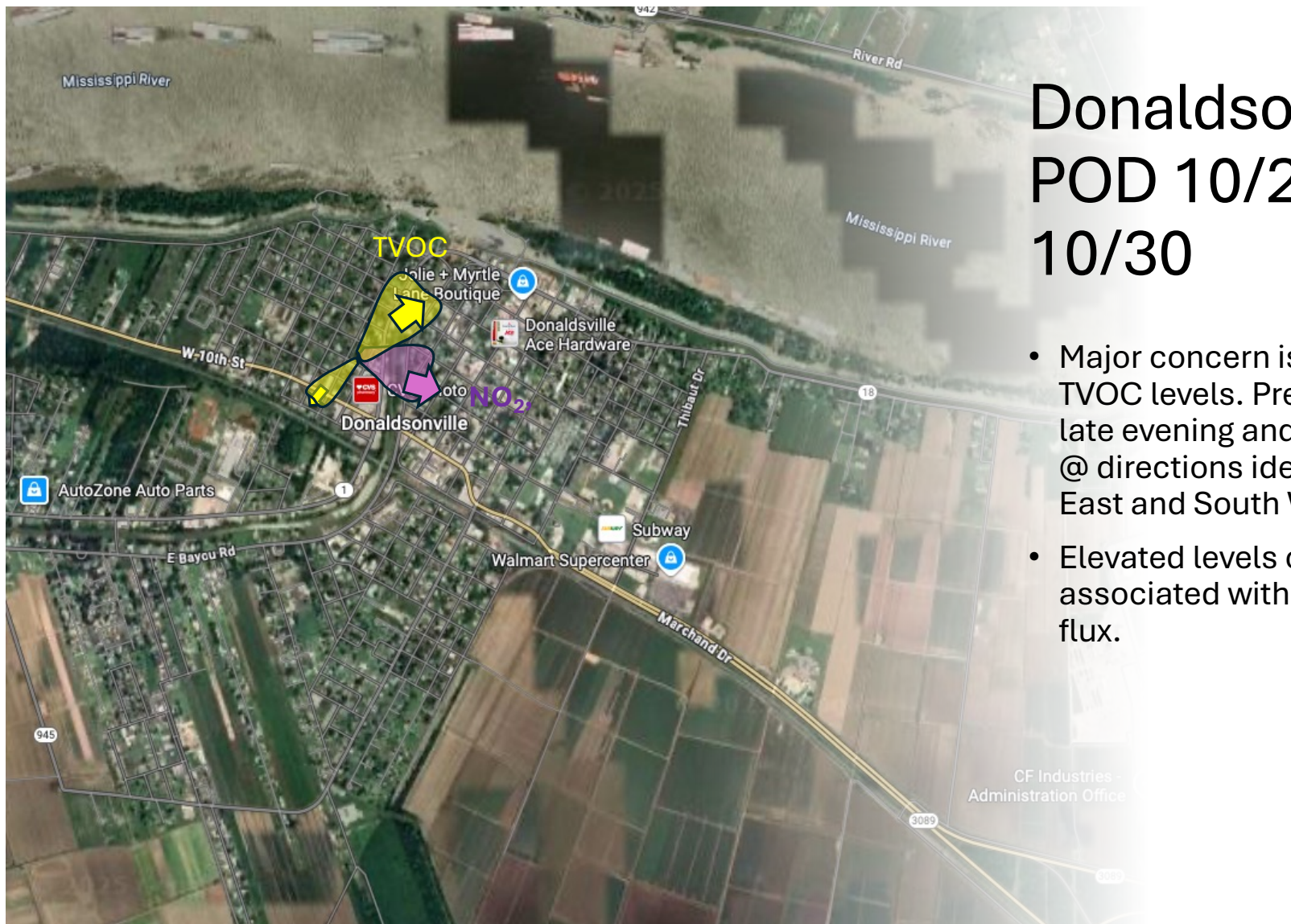












Donaldsonville POD 10/24- 10/30

- Major concern is due to high TVOC levels. Predominantly at late evening and knight hours. @ directions identified: North East and South West
- Elevated levels of NO₂ associated with East direction flux.