

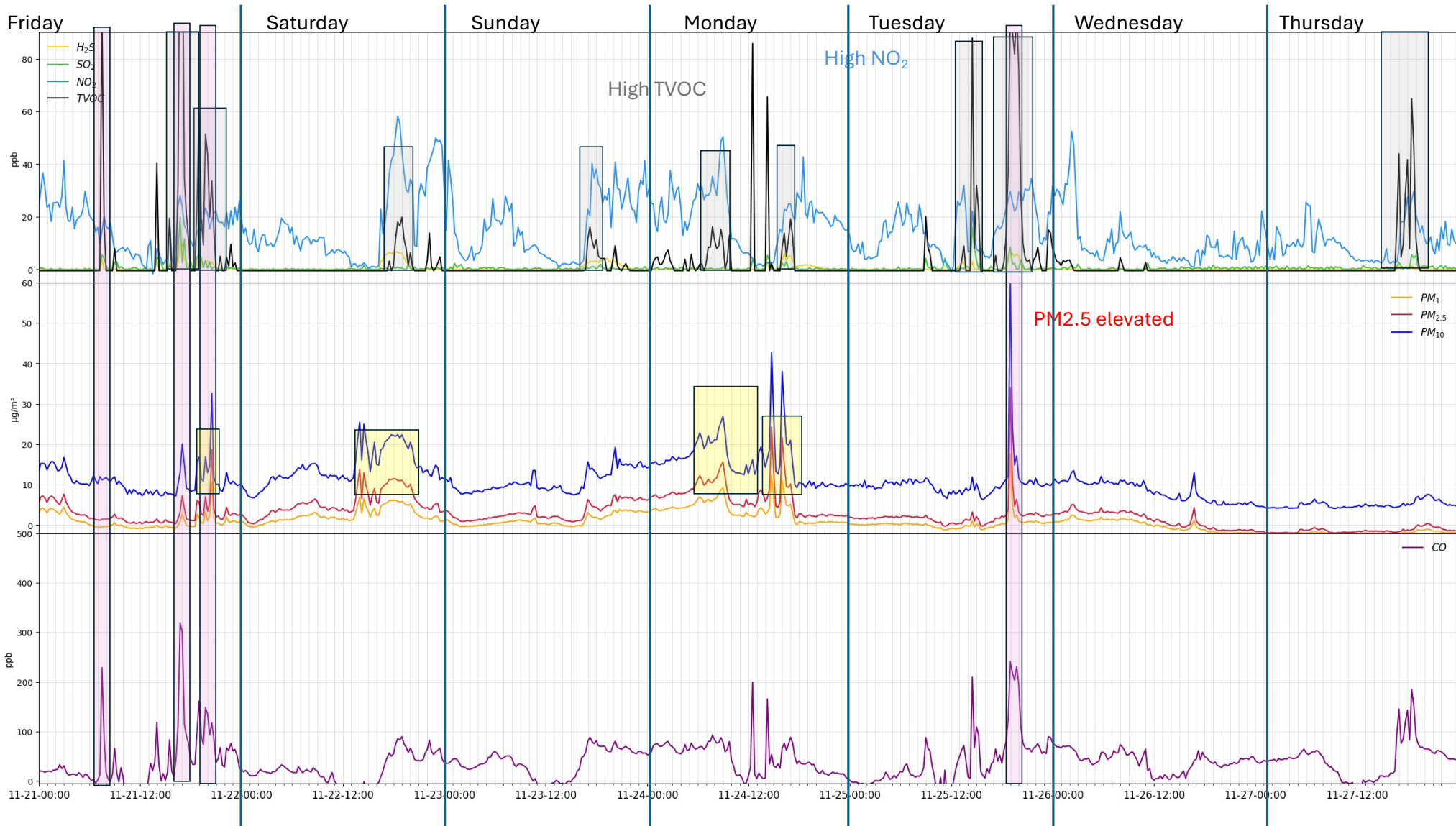
# Donaldsonville POD

November 21 – November 27, 2025

## *Disclaimer*

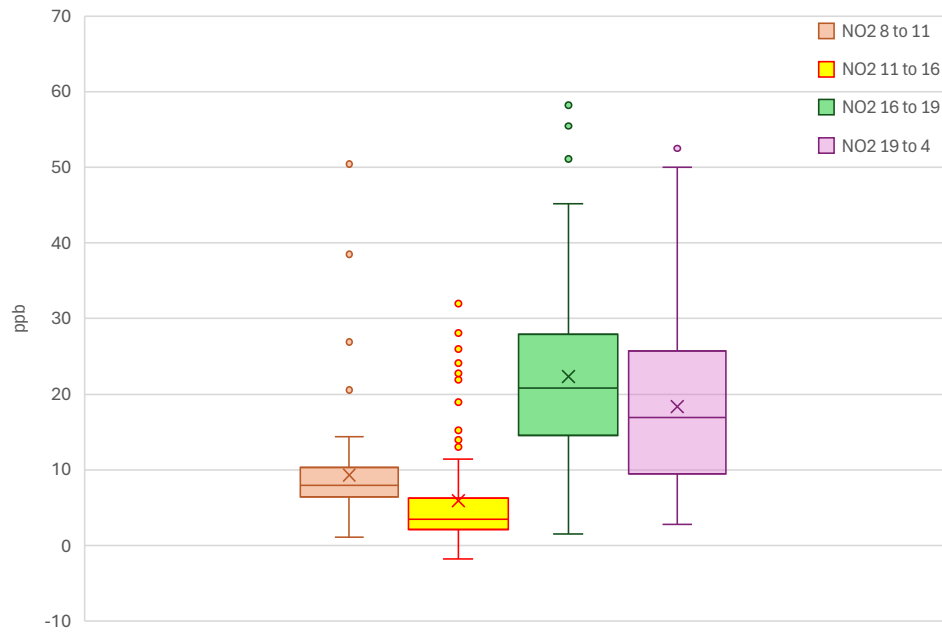
*The data presented on this website were collected by non-regulatory monitors (air quality sensors) that do not meet the most current Environmental Protection Agency-approved or promulgated emission test or monitoring method. Thus, consistent with Louisiana's Community Air Monitoring Reliability Act, the data may not be used to allege violations or non-compliance with federal or State law. Rather, the data is intended for non-regulatory applications -- specifically, to better understand local air quality and to help communities to work with local companies to seek solutions to observed pollution events in a collaborative manner.*

*At the same time, most of the sensors are subject to QA/QC procedures and are calibrated and evaluated against official regulatory monitors.*



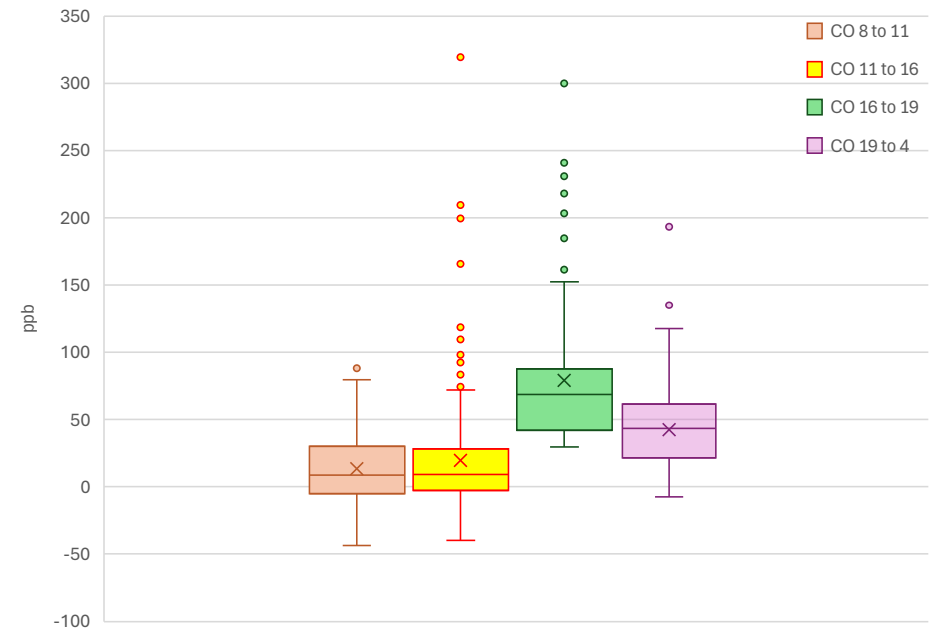
# Hourly concentration distribution

NO2 hourly distribution



ppb	Mean	Median	Q1	Q3	Min	Max	# points
NO2 4 to 8	15.0	12.2	6.3	22.1	-1.7	58.2	672
NO2 8 to 11	9.3	7.9	6.5	10.3	1.1	50.4	84
NO2 11 to 16	5.9	3.4	2.1	6.3	-1.7	31.9	140
NO2 16 to 19	22.4	20.8	14.6	28.0	1.5	58.2	84
NO2 19 to 4	18.4	16.9	9.4	25.9	2.8	52.5	252

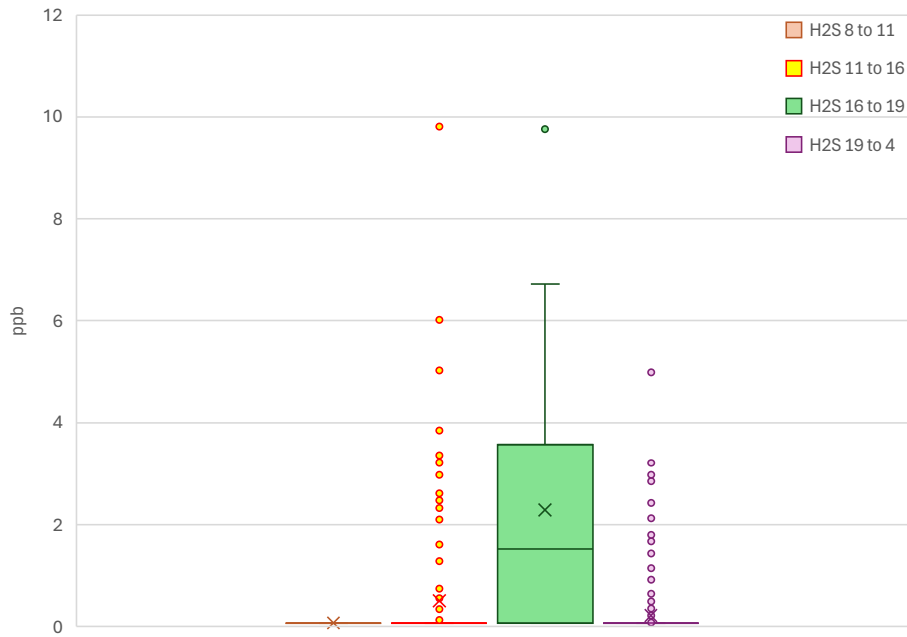
CO hourly distribution



ppb	Mean	Median	Q1	Q3	Min	Max	# points
CO 4 to 8	38.6	35.1	11.7	59.8	-43.7	319.3	672
CO 8 to 11	13.5	8.8	-4.9	30.3	-43.7	88.1	84
CO 11 to 16	19.6	9.0	-2.6	28.0	-40.0	319.3	140
CO 16 to 19	79.2	68.6	41.8	87.7	29.7	300.0	84
CO 19 to 4	42.7	43.7	21.4	61.6	-7.5	193.2	252

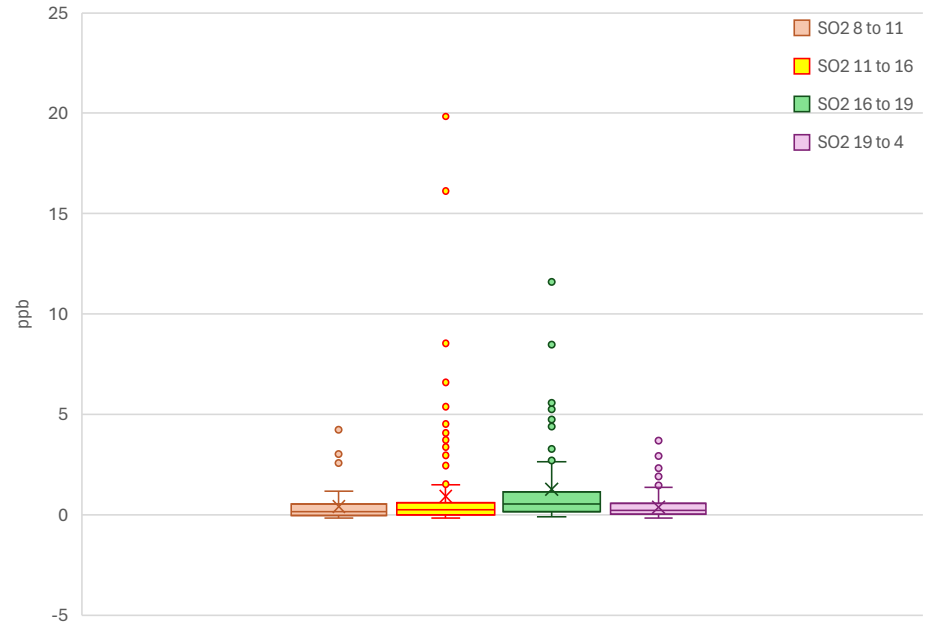
# Hourly concentration distribution

H2S hourly distribution



ppb	Mean	Median	Q1	Q3	Min	Max	# points
H2S 4 to 8	0.5	0.1	0.1	0.1	0.1	9.8	672
H2S 8 to 11	0.1	0.1	0.1	0.1	0.1	0.1	84
H2S 11 to 16	0.5	0.1	0.1	0.1	0.1	9.8	140
H2S 16 to 19	2.3	1.5	0.1	3.7	0.1	9.8	84
H2S 19 to 4	0.2	0.1	0.1	0.1	0.1	5.0	252

SO2 hourly distribution

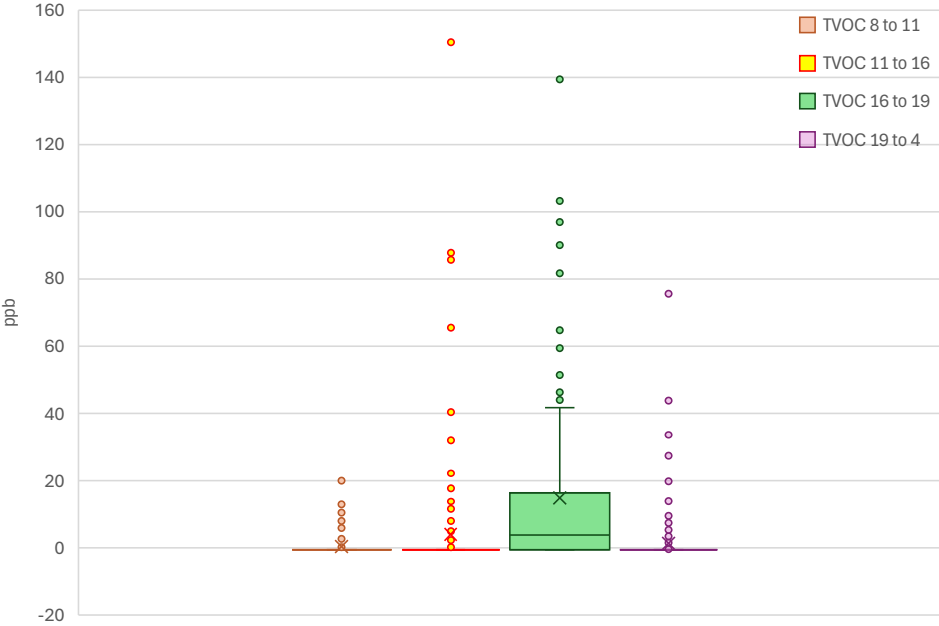


ppb	Mean	Median	Q1	Q3	Min	Max	# points
SO2 4 to 8	0.6	0.2	0.0	0.6	-0.2	19.8	672
SO2 8 to 11	0.4	0.2	0.0	0.5	-0.2	4.3	84
SO2 11 to 16	0.9	0.2	0.0	0.6	-0.1	19.8	140
SO2 16 to 19	1.3	0.5	0.2	1.2	-0.1	11.6	84
SO2 19 to 4	0.4	0.2	0.0	0.6	-0.2	3.7	252

H<sub>2</sub>S data is not referenced and calibrated against regulatory monitor

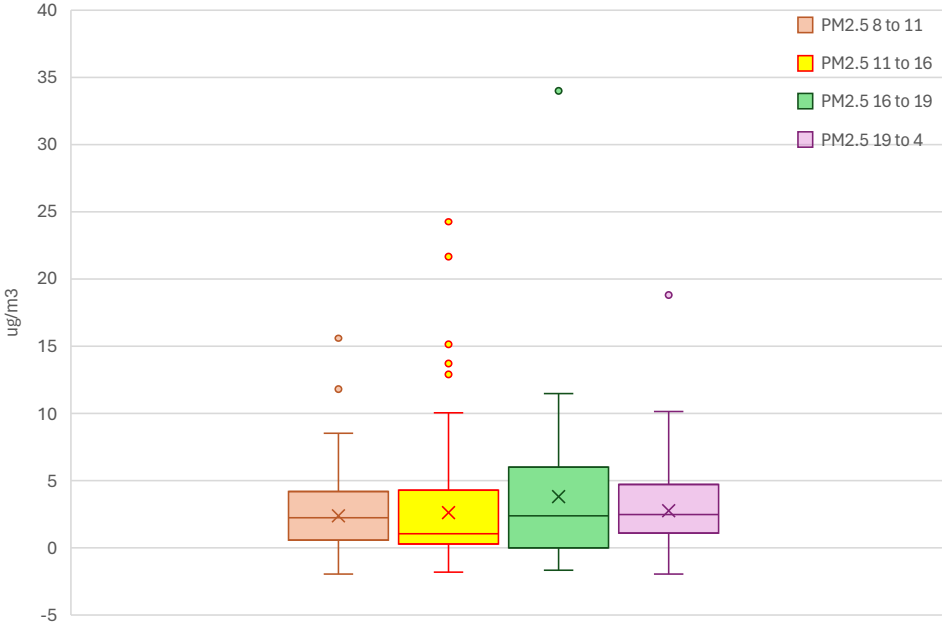
# Hourly concentration distribution

TVOC hourly distribution



ppb	Mean	Median	Q1	Q3	Min	Max	# points
TVOC 4 to 8	3.5	-0.5	-0.5	-0.5	-0.5	150.4	672
TVOC 8 to 11	0.4	-0.5	-0.5	-0.5	-0.5	20.1	84
TVOC 11 to 16	4.0	-0.5	-0.5	-0.5	-0.5	150.4	140
TVOC 16 to 19	14.8	3.8	-0.5	16.4	-0.5	139.4	84
TVOC 19 to 4	1.4	-0.5	-0.5	-0.5	-0.5	75.6	252

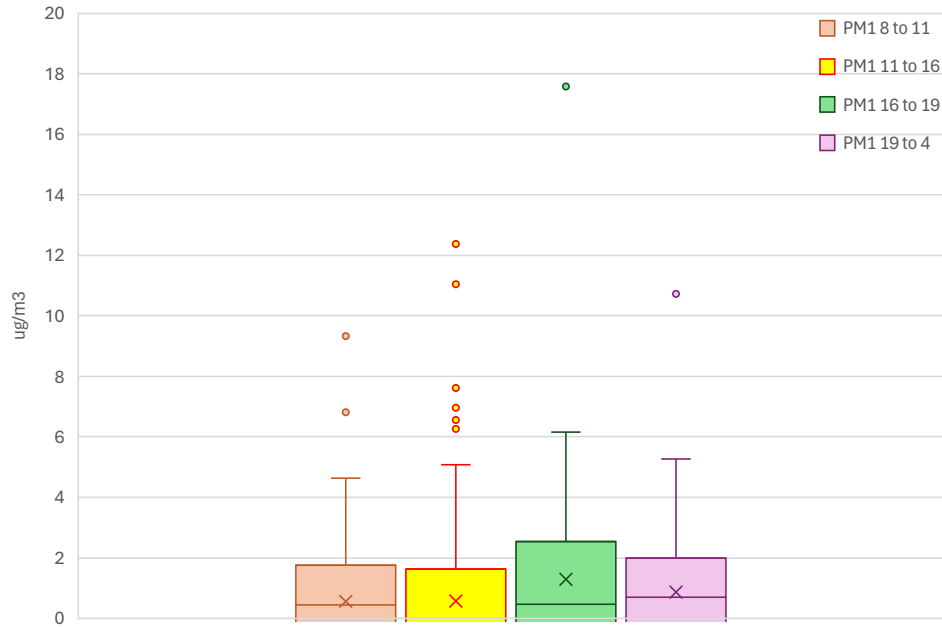
PM2.5 hourly distribution



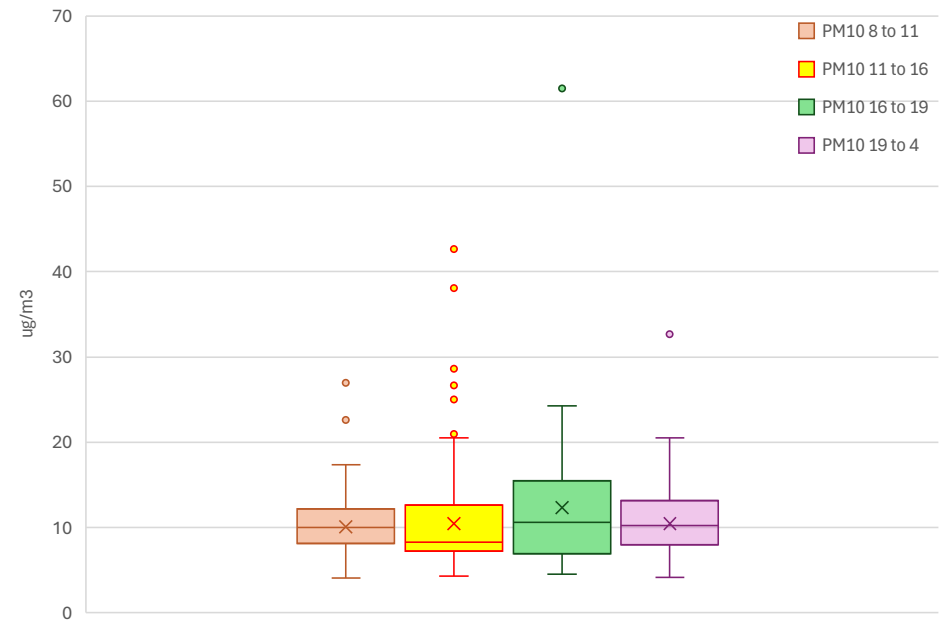
ug/m3	Mean	Median	Q1	Q3	Min	Max	# points
PM2.5 4 to 8	2.9	2.2	0.7	4.5	-2.0	34.0	672
PM2.5 8 to 11	2.4	2.3	0.6	4.2	-2.0	15.6	84
PM2.5 11 to 16	2.6	1.1	0.3	4.3	-1.8	24.3	140
PM2.5 16 to 19	3.8	2.4	0.0	6.0	-1.6	34.0	84
PM2.5 19 to 4	2.8	2.5	1.1	4.7	-2.0	18.8	252

# Hourly concentration distribution

PM1 hourly distribution



PM10 hourly distribution

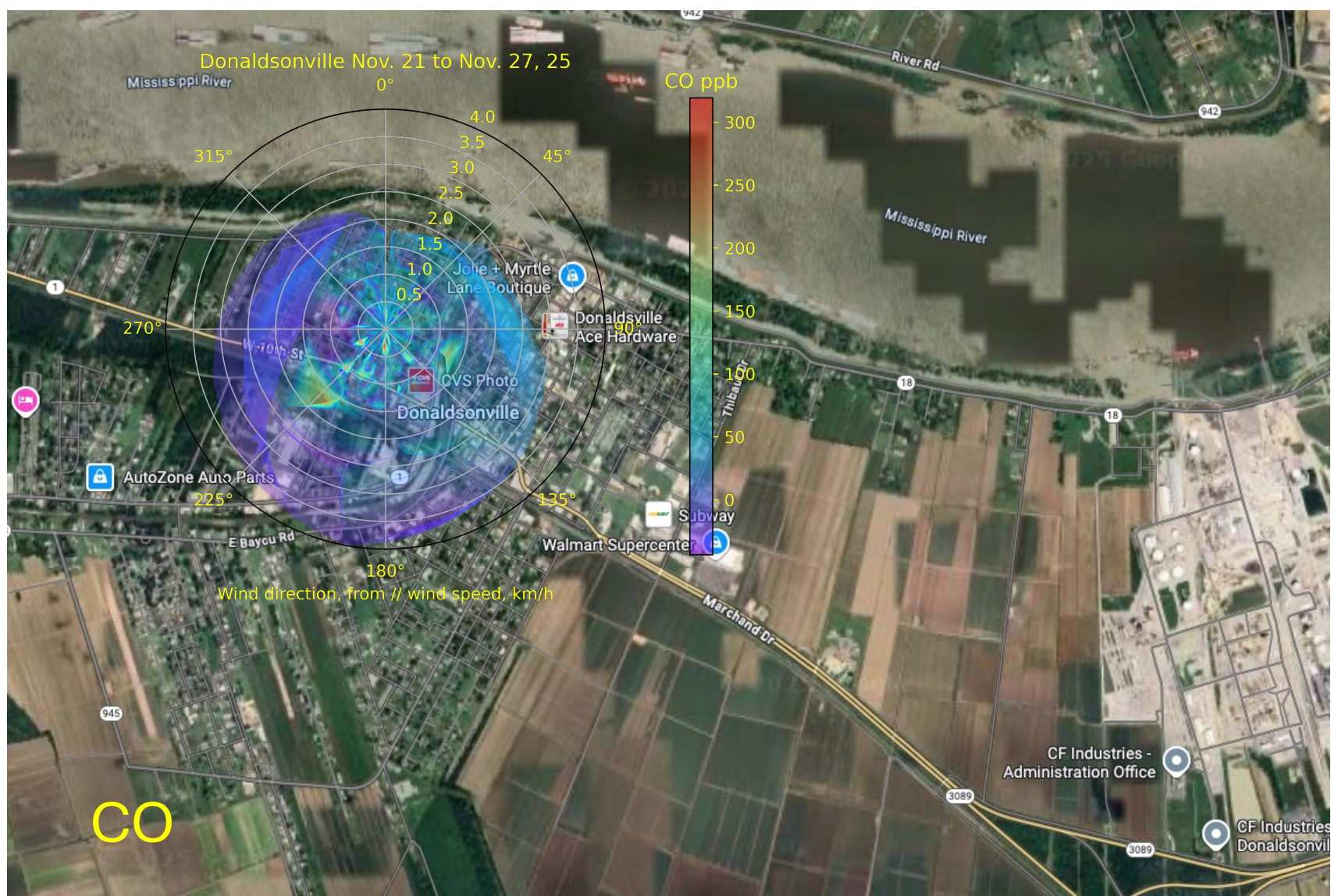


ug/m3	Mean	Median	Q1	Q3	Min	Max	# points
PM14 to 8	0.9	0.5	-0.6	1.9	-2.3	17.6	672
PM18 to 11	0.6	0.4	-0.7	1.8	-2.3	9.3	84
PM11 to 16	0.6	-0.3	-0.9	1.6	-2.2	12.4	140
PM116 to 19	1.3	0.5	-1.1	2.6	-2.1	17.6	84
PM119 to 4	0.9	0.7	-0.2	2.0	-2.3	10.7	252

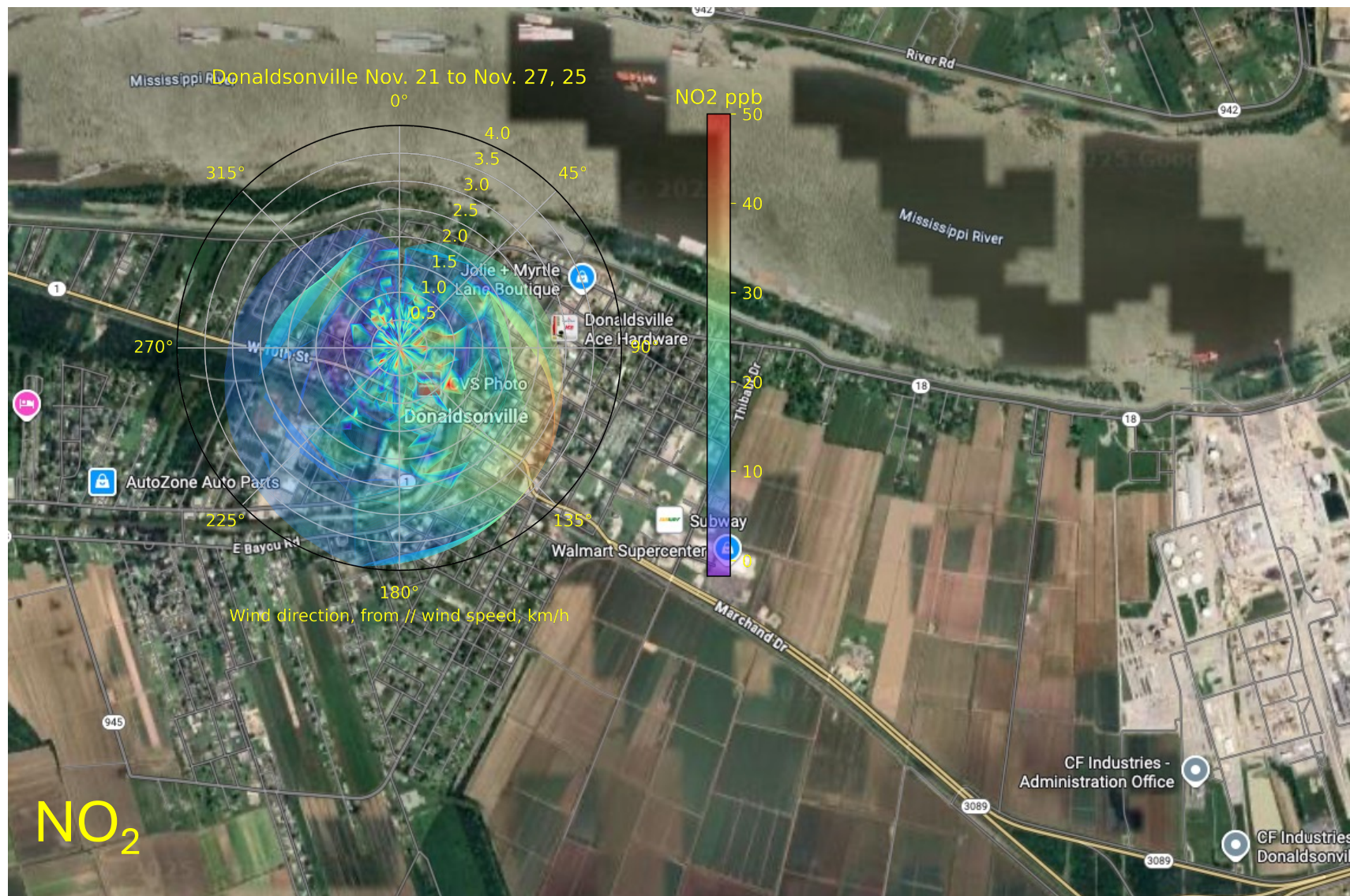
ug/m3	Mean	Median	Q1	Q3	Min	Max	# points
PM104 to 8	10.8	10.1	7.7	12.9	4.1	61.5	672
PM108 to 11	10.1	10.0	8.1	12.2	4.1	27.0	84
PM1011 to 16	10.5	8.3	7.2	12.6	4.3	42.7	140
PM1016 to 19	12.3	10.6	6.9	15.5	4.5	61.5	84
PM1019 to 4	10.4	10.2	8.0	13.3	4.2	32.6	252

PM<sub>1</sub> data is not referenced and calibrated against regulatory monitor



































# Donaldsonville POD 11/21- 11/27



- Moderate levels of pollutants.
- TVOCs from 2 directions: South-West and-South East.
- South-East winds also associated with NO2