

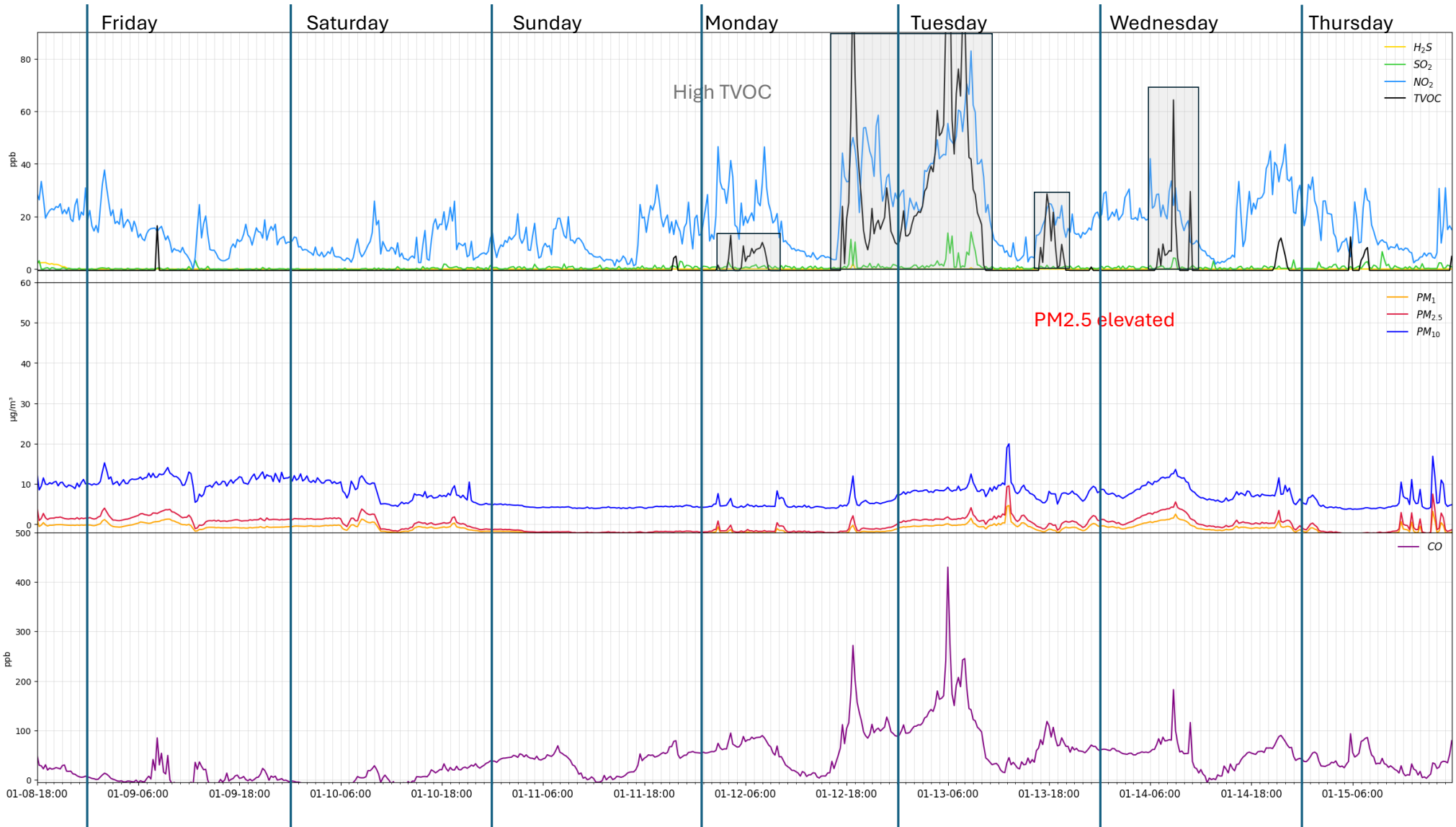
# Donaldsonville POD

Jan 9 – January 15, 2026

## *Disclaimer*

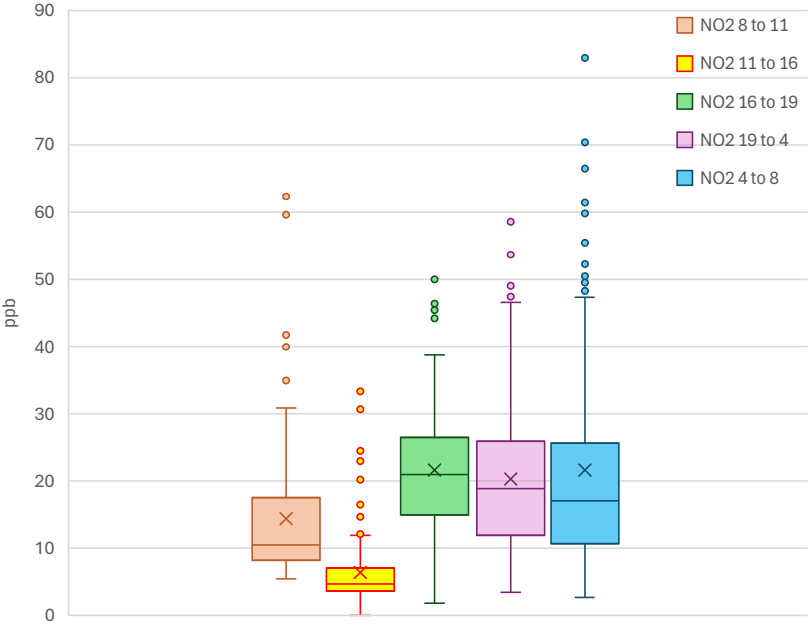
*The data presented on this website were collected by non-regulatory monitors (air quality sensors) that do not meet the most current Environmental Protection Agency-approved or promulgated emission test or monitoring method. Thus, consistent with Louisiana's Community Air Monitoring Reliability Act, the data may not be used to allege violations or non-compliance with federal or State law. Rather, the data is intended for non-regulatory applications -- specifically, to better understand local air quality and to help communities to work with local companies to seek solutions to observed pollution events in a collaborative manner.*

*At the same time, most of the sensors are subject to QA/QC procedures and are calibrated and evaluated against official regulatory monitors.*

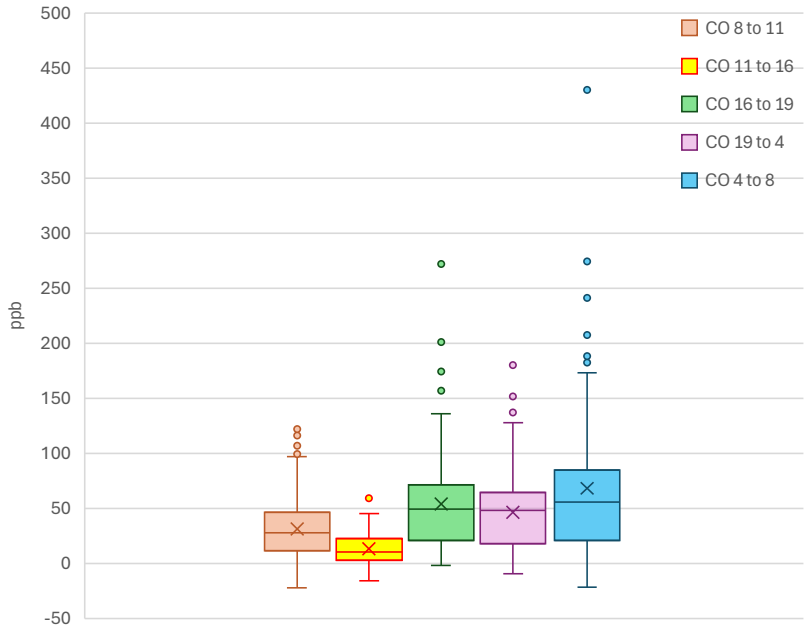


# Hourly concentration distribution

NO<sub>2</sub> hourly distribution



CO hourly distribution

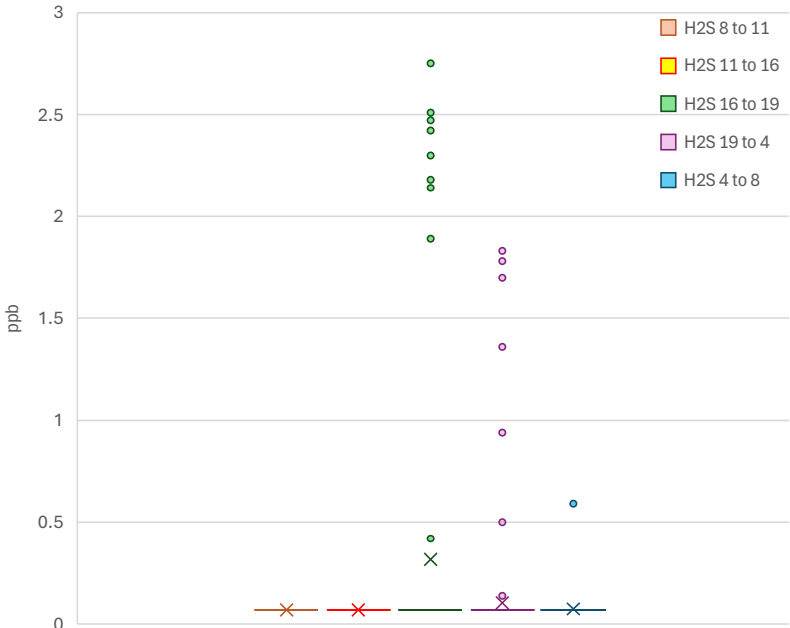


ppb	Mean	Median	Q1	Q3	Min	Max	# points
NO <sub>2</sub> 4 to 8	21.6	17.1	10.7	25.6	2.7	82.9	112
NO <sub>2</sub> 8 to 11	14.4	10.5	8.2	17.5	5.4	62.3	84
NO <sub>2</sub> 11 to 16	6.4	4.7	3.7	7.0	0.1	33.3	140
NO <sub>2</sub> 16 to 19	21.6	20.9	15.0	26.4	1.9	50.0	84
NO <sub>2</sub> 19 to 4	20.3	18.9	11.9	25.9	3.5	58.5	252

ppb	Mean	Median	Q1	Q3	Min	Max	# points
CO 4 to 8	68.1	55.8	20.8	84.7	-21.9	429.7	112
CO 8 to 11	31.5	27.6	11.7	46.1	-22.1	122.1	84
CO 11 to 16	13.1	10.3	2.6	22.8	-16.1	64.4	140
CO 16 to 19	54.0	49.5	20.8	71.2	-1.8	271.7	84
CO 19 to 4	46.4	48.0	17.7	64.4	-9.4	179.8	252

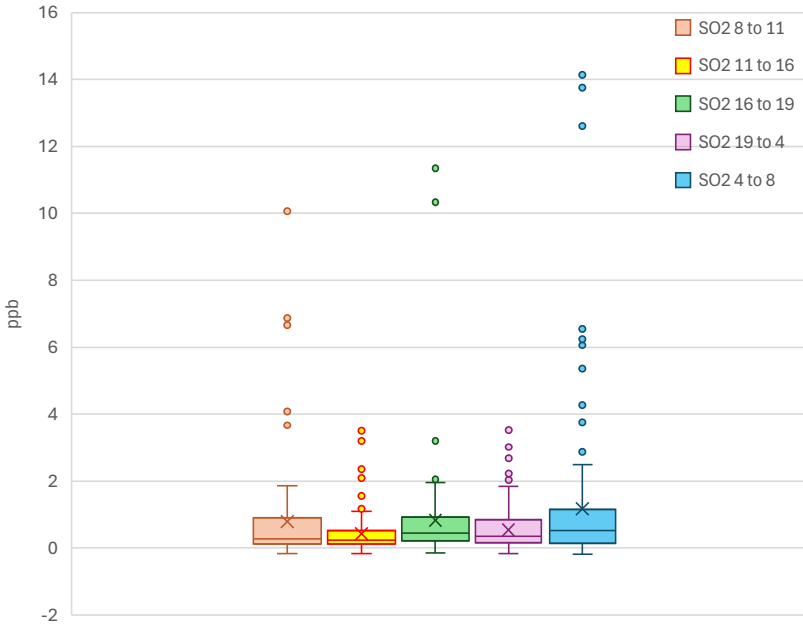
# Hourly concentration distribution

H<sub>2</sub>S hourly distribution



ppb	Mean	Median	Q1	Q3	Min	Max	# points
H <sub>2</sub> S4to8	0.1	0.1	0.1	0.1	0.1	0.6	112
H <sub>2</sub> S8to11	0.1	0.1	0.1	0.1	0.1	0.1	84
H <sub>2</sub> S11to16	0.1	0.1	0.1	0.1	0.1	0.1	140
H <sub>2</sub> S16to19	0.3	0.1	0.1	0.1	0.1	2.8	84
H <sub>2</sub> S19to4	0.1	0.1	0.1	0.1	0.1	1.8	252

SO<sub>2</sub> hourly distribution

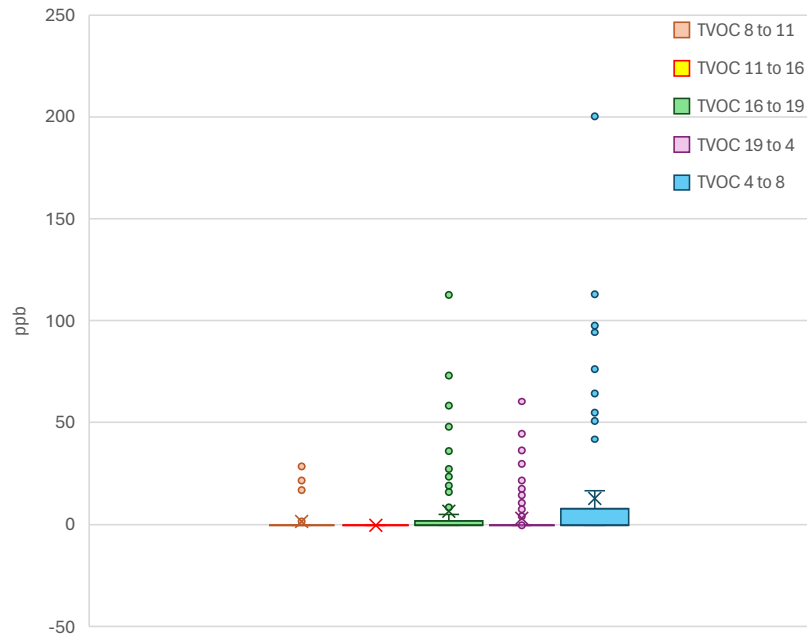


ppb	Mean	Median	Q1	Q3	Min	Max	# points
SO <sub>2</sub> 4to8	1.2	0.5	0.2	1.2	-0.2	14.1	112
SO <sub>2</sub> 8to11	0.8	0.3	0.1	0.9	-0.2	10.1	84
SO <sub>2</sub> 11to16	0.4	0.2	0.1	0.5	-0.2	3.5	140
SO <sub>2</sub> 16to19	0.8	0.4	0.2	0.9	-0.1	11.4	84
SO <sub>2</sub> 19to4	0.5	0.4	0.2	0.9	-0.2	3.5	252

H<sub>2</sub>S data is not referenced and calibrated against regulatory monitor

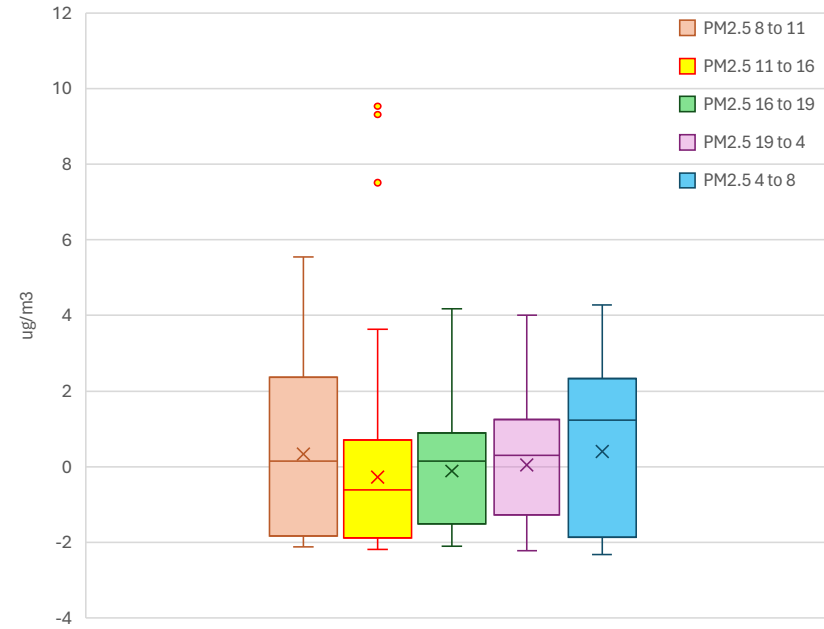
# Hourly concentration distribution

TVOC hourly distribution



ppb	Mean	Median	Q1	Q3	Min	Max	# points
TVOC 4 to 8	12.7	-0.5	-0.5	7.7	-0.5	200.1	112
TVOC 8 to 11	1.6	-0.5	-0.5	-0.5	-0.5	30.3	84
TVOC 11 to 16	-0.5	-0.5	-0.5	-0.5	-0.5	-0.5	140
TVOC 16 to 19	6.4	-0.5	-0.5	1.9	-0.5	112.5	84
TVOC 19 to 4	2.9	-0.5	-0.5	-0.5	-0.5	60.3	252

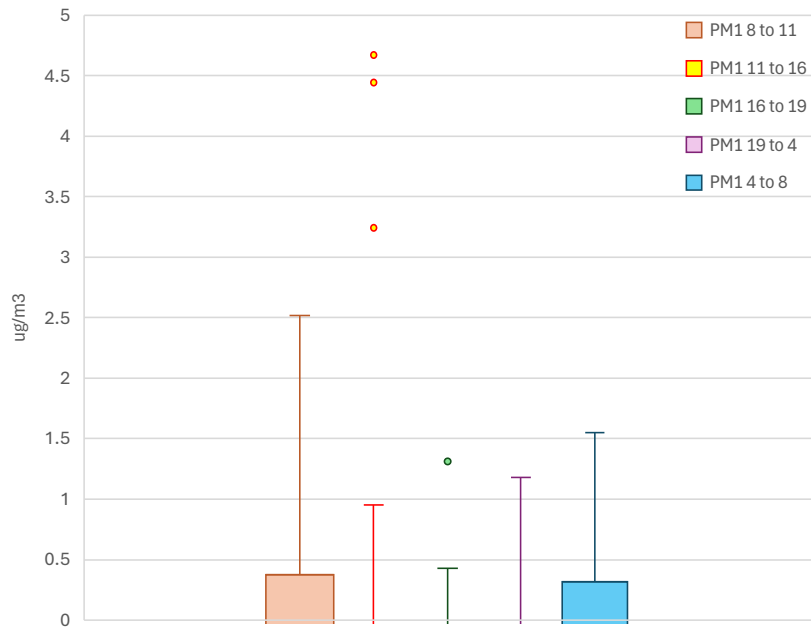
PM<sub>2.5</sub> hourly distribution



ug/m3	Mean	Median	Q1	Q3	Min	Max	# points
PM <sub>2.5</sub> 4 to 8	0.4	1.2	-1.9	2.3	-2.3	4.3	112
PM <sub>2.5</sub> 8 to 11	0.3	0.2	-1.8	2.4	-2.1	5.6	84
PM <sub>2.5</sub> 11 to 1	-0.3	-0.6	-1.9	0.7	-2.2	9.5	140
PM <sub>2.5</sub> 16 to 1	-0.1	0.2	-1.5	0.9	-2.1	4.2	84
PM <sub>2.5</sub> 19 to 4	0.1	0.3	-1.3	1.2	-2.2	4.0	252

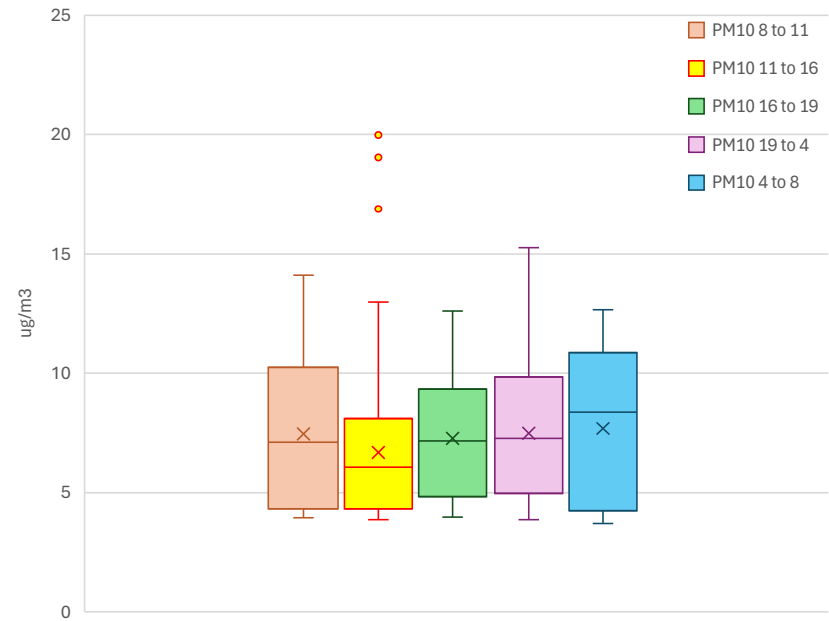
# Hourly concentration distribution

PM<sub>1</sub> hourly distribution



ug/m3	Mean	Median	Q1	Q3	Min	Max	# points
PM <sub>1</sub> 4 to 8	-0.8	-0.3	-2.2	0.3	-2.5	1.6	112
PM <sub>1</sub> 8 to 11	-0.9	-1.0	-2.2	0.4	-2.4	2.5	84
PM <sub>1</sub> 11 to 16	-1.3	-1.4	-2.2	-0.8	-2.4	4.7	140
PM <sub>1</sub> 16 to 19	-1.2	-1.0	-2.1	-0.8	-2.4	1.3	84
PM <sub>1</sub> 19 to 4	-1.1	-0.9	-1.8	-0.5	-2.5	1.2	252

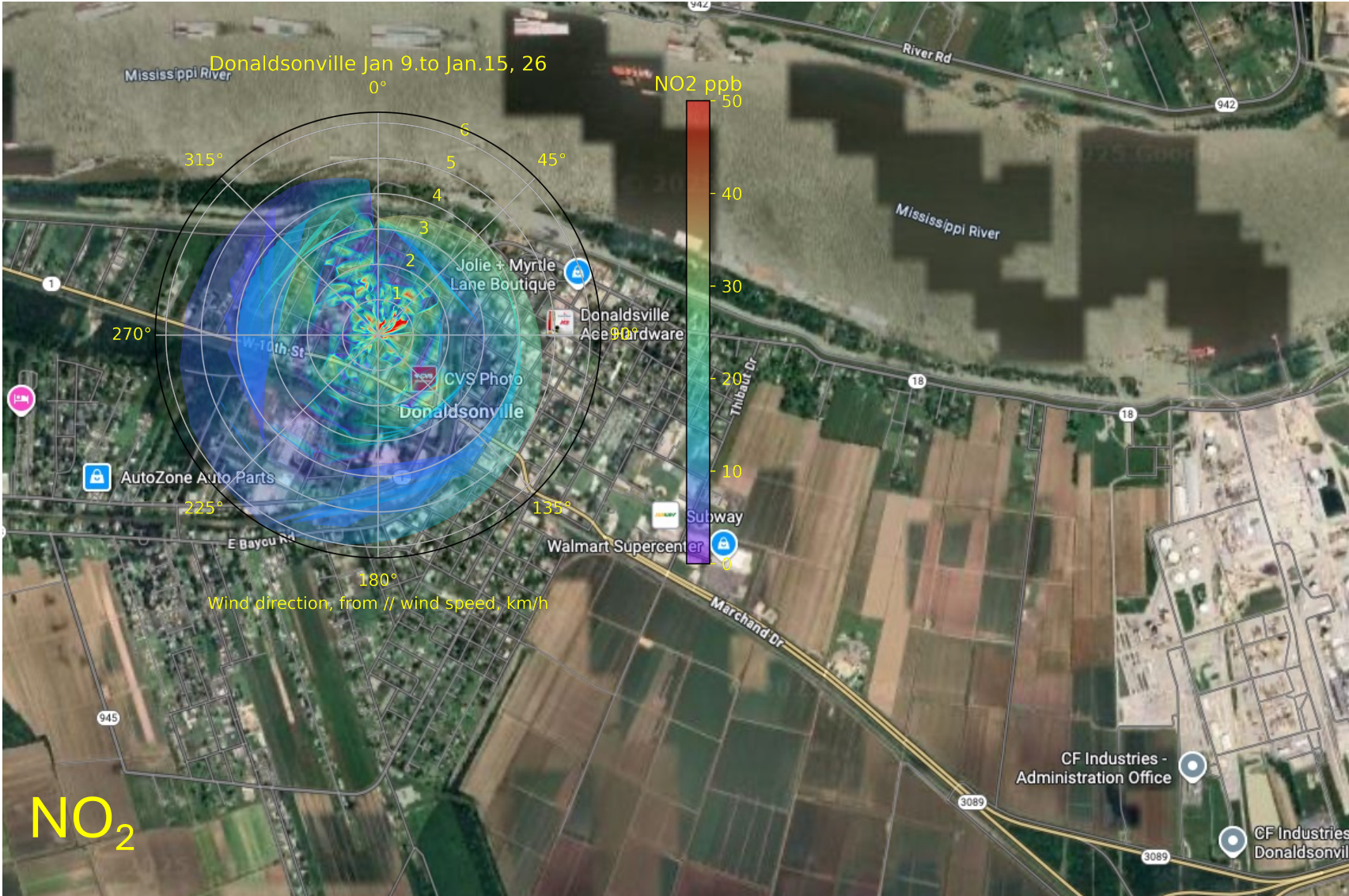
PM<sub>10</sub> hourly distribution



ug/m3	Mean	Median	Q1	Q3	Min	Max	# points
PM <sub>10</sub> 4 to 8	7.7	8.4	4.3	10.9	3.7	12.7	112
PM <sub>10</sub> 8 to 11	7.5	7.1	4.3	10.2	3.9	14.1	84
PM <sub>10</sub> 11 to 16	6.7	6.1	4.3	8.1	3.9	20.0	140
PM <sub>10</sub> 16 to 19	7.3	7.2	4.8	9.3	4.0	12.6	84
PM <sub>10</sub> 19 to 4	7.5	7.3	5.0	9.9	3.9	15.3	252

PM<sub>1</sub> data is not referenced and calibrated against regulatory monitor

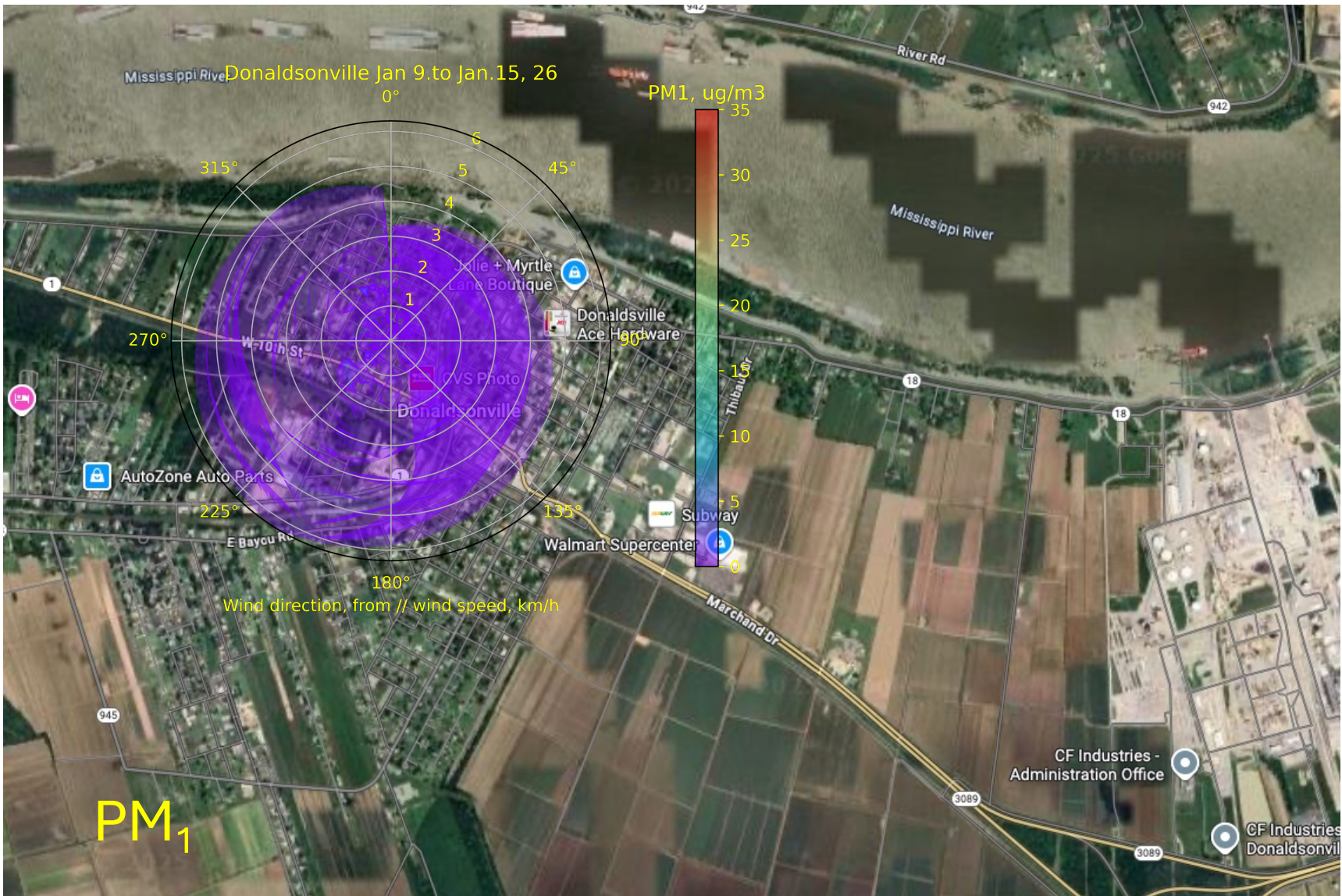


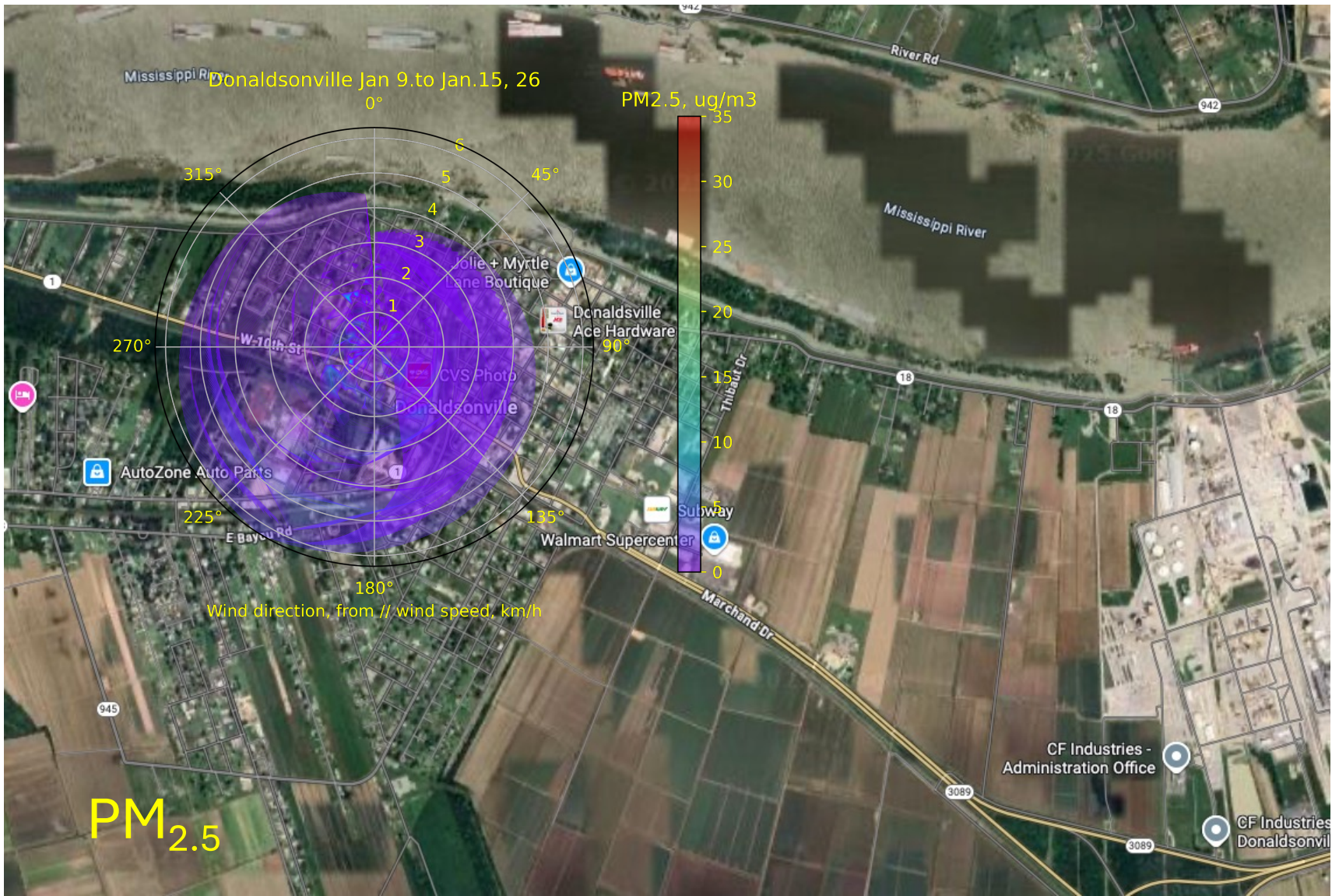
















# Donaldsonville POD 1/9-1/15

- Overall relative good air quality
- TVOC elevated one day but not directionally related.