

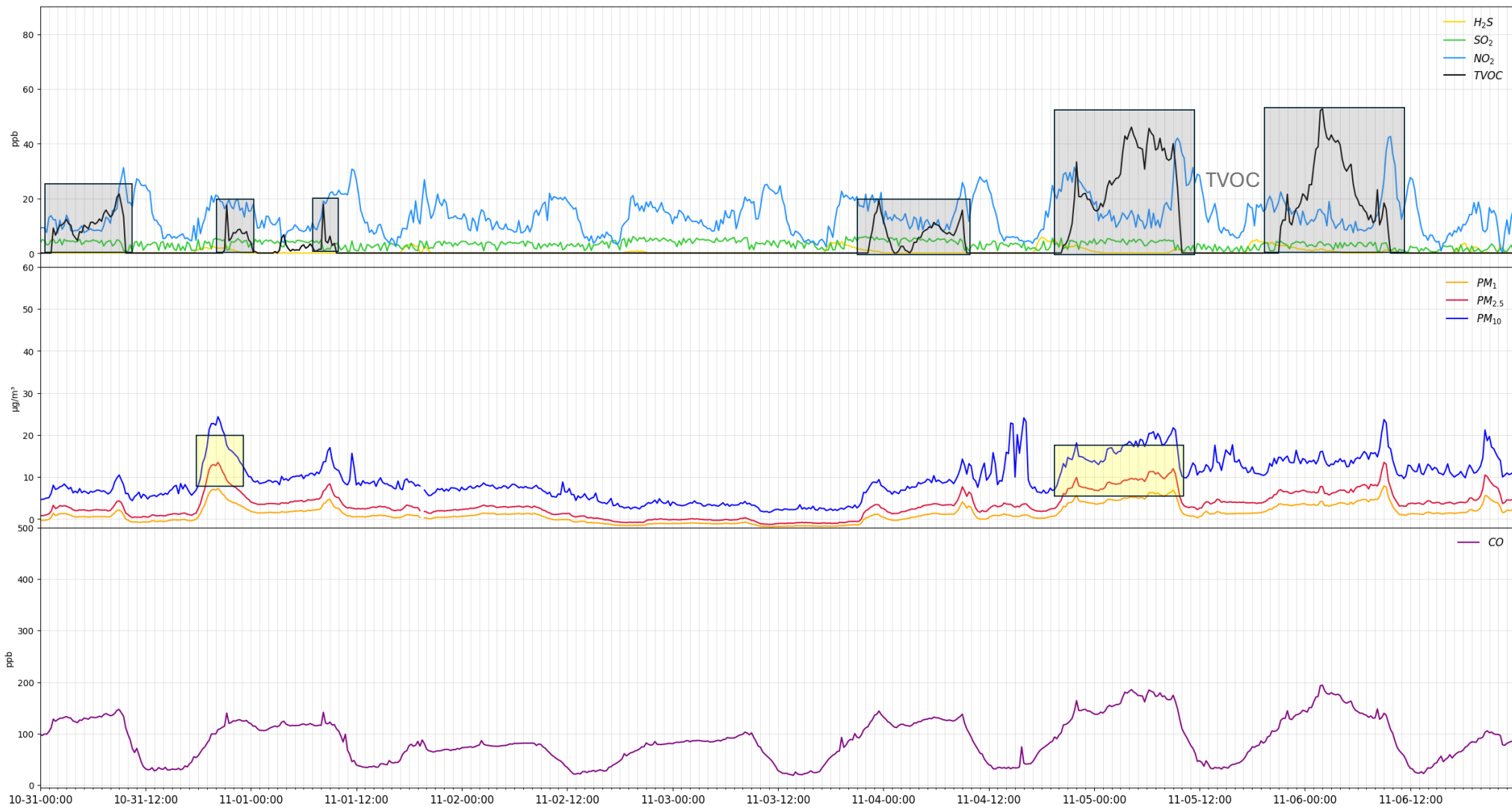
Alsen POD

October 31 – November 6, 2025

Disclaimer

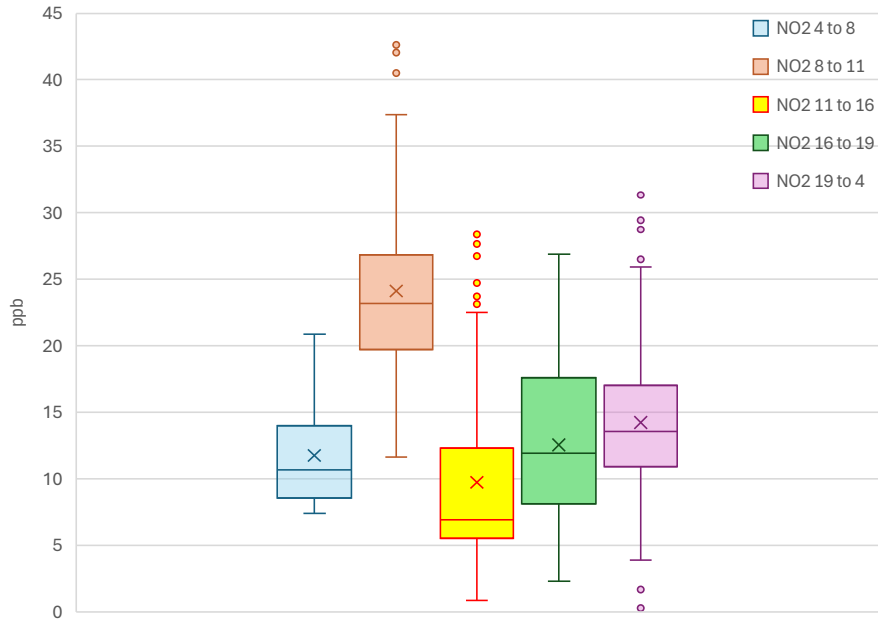
The data presented on this website were collected by non-regulatory monitors (air quality sensors) that do not meet the most current Environmental Protection Agency-approved or promulgated emission test or monitoring method. Thus, consistent with Louisiana's Community Air Monitoring Reliability Act, the data may not be used to allege violations or non-compliance with federal or State law. Rather, the data is intended for non-regulatory applications -- specifically, to better understand local air quality and to help communities to work with local companies to seek solutions to observed pollution events in a collaborative manner.

At the same time, most of the sensors are subject to QA/QC procedures and are calibrated and evaluated against official regulatory monitors.



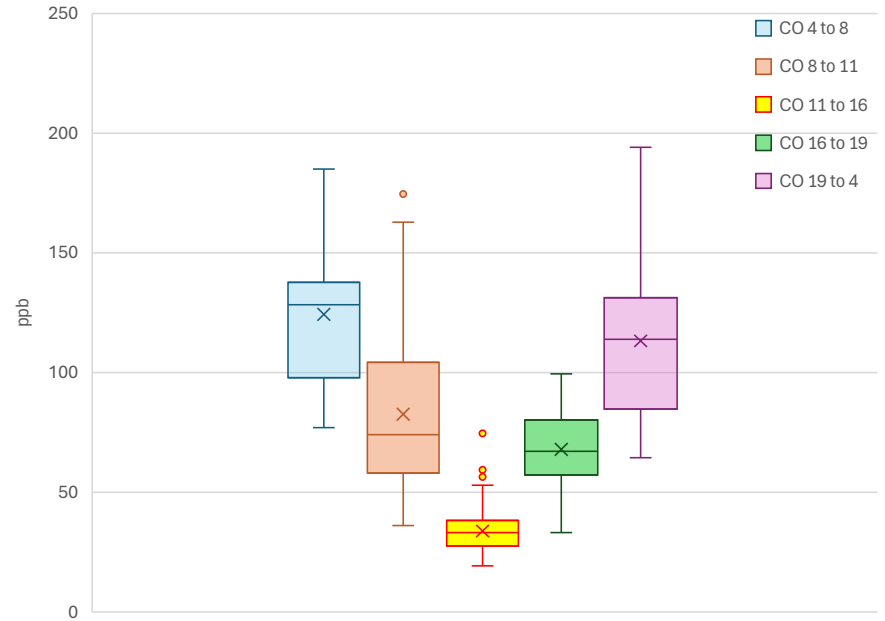
Hourly concentration distribution

NO2 hourly distribution



ppb	Mean	Median	Q1	Q3	Min	Max	# points
NO2 4 to 8	11.8	10.7	8.6	14.1	7.4	20.9	112
NO2 8 to 11	24.1	23.2	19.7	26.8	11.6	42.6	84
NO2 11 to 16	9.7	6.9	5.5	12.3	0.9	28.4	140
NO2 16 to 19	12.6	11.9	8.2	17.6	2.3	26.9	84
NO2 19 to 4	14.2	13.6	10.9	17.1	0.3	31.3	252

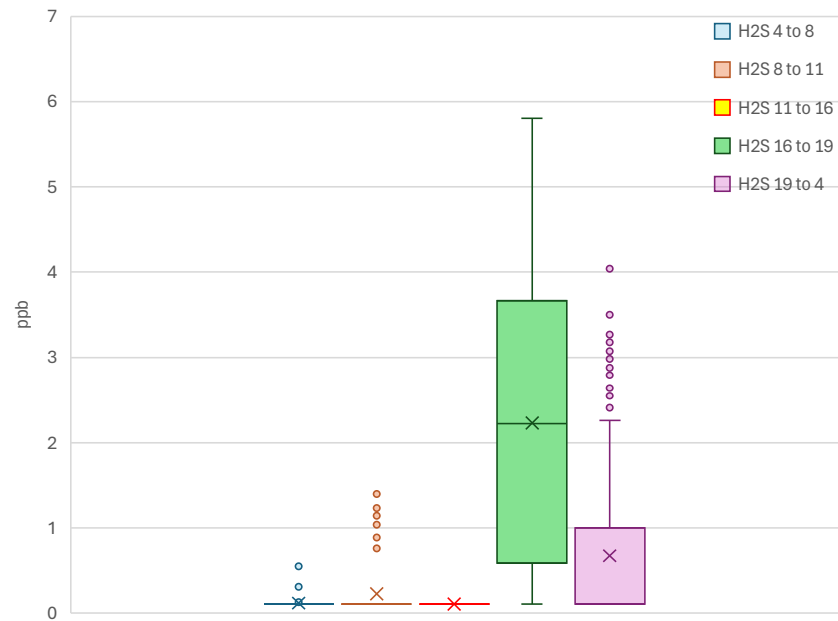
CO hourly distribution



ppb	Mean	Median	Q1	Q3	Min	Max	# points
CO 4 to 8	124.2	128.2	97.8	138.5	77.1	184.8	112
CO 8 to 11	82.6	74.1	58.0	104.2	36.2	174.5	84
CO 11 to 16	33.8	33.2	27.5	38.2	19.1	74.6	140
CO 16 to 19	67.9	67.2	57.1	80.3	33.2	99.5	84
CO 19 to 4	113.2	114.0	84.4	131.4	64.4	194.0	252

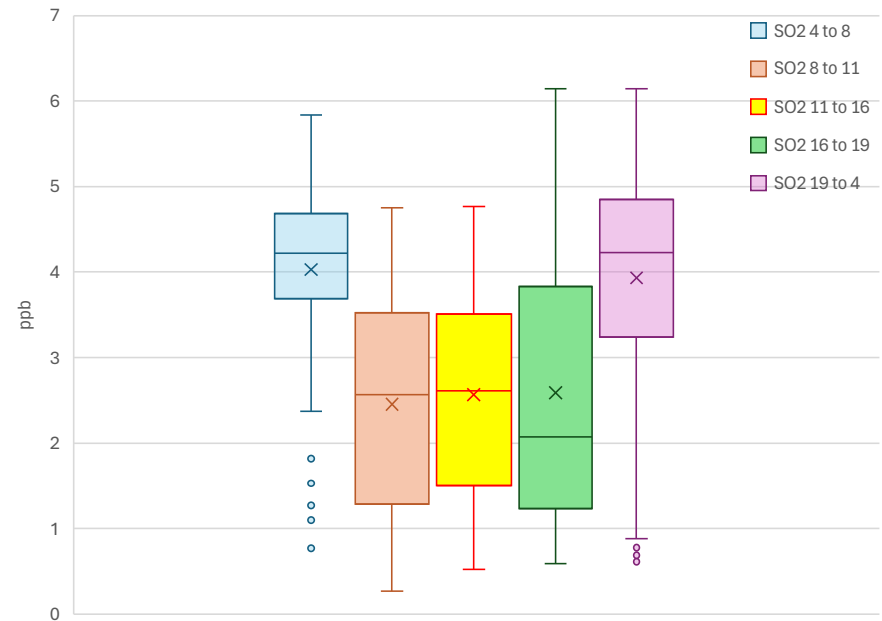
Hourly concentration distribution

H₂S hourly distribution



ppb	Mean	Median	Q1	Q3	Min	Max	# points
H ₂ S 4 to 8	0.1	0.1	0.1	0.0	0.0	0.6	112
H ₂ S 8 to 11	0.2	0.1	0.1	0.1	0.1	1.4	84
H ₂ S 11 to 16	0.1	0.1	0.1	0.1	0.1	0.1	140
H ₂ S 16 to 19	2.2	2.2	0.6	3.7	0.1	5.8	84
H ₂ S 19 to 4	0.7	0.1	0.1	1.0	0.1	4.0	252

SO₂ hourly distribution

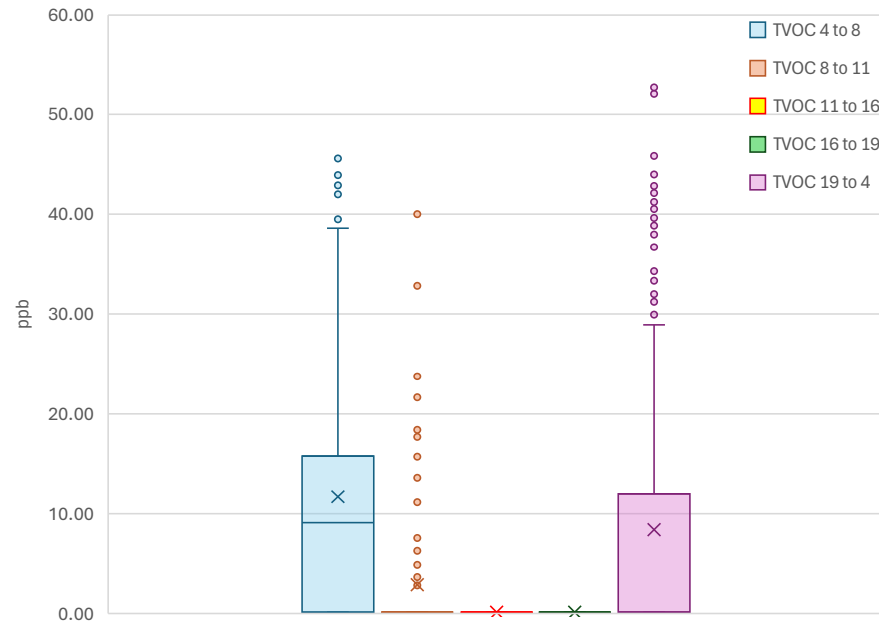


ppb	Mean	Median	Q1	Q3	Min	Max	# points
SO ₂ 4 to 8	4.0	4.2	3.7	4.7	0.8	5.8	112
SO ₂ 8 to 11	2.5	2.6	1.3	3.5	0.3	4.8	84
SO ₂ 11 to 16	2.6	2.6	1.5	3.5	0.5	4.8	140
SO ₂ 16 to 19	2.6	2.1	1.2	3.8	0.6	6.1	84
SO ₂ 19 to 4	3.9	4.2	3.2	4.9	0.6	6.1	252

H₂S data is not referenced and calibrated against regulatory monitor

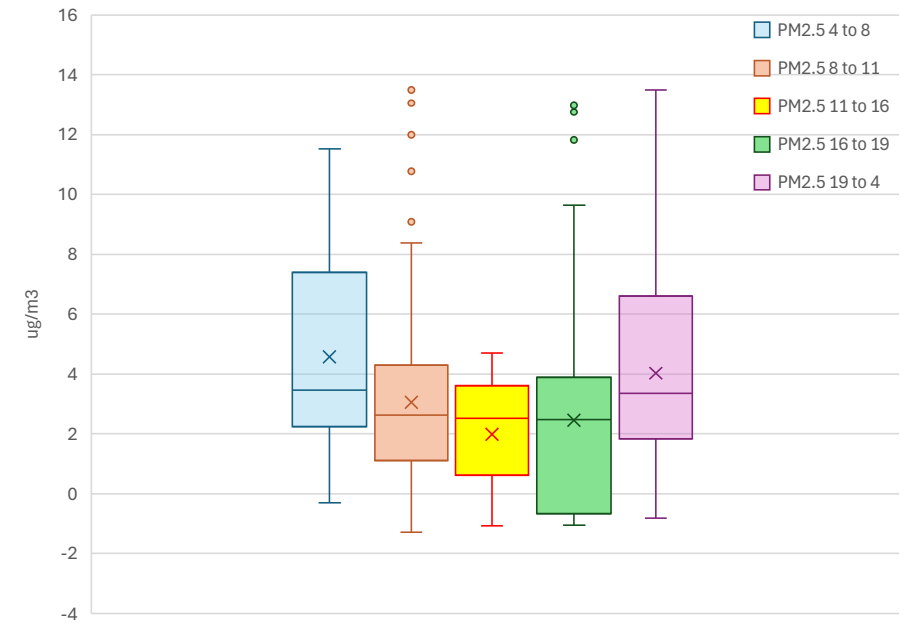
Hourly concentration distribution

TVOC hourly distribution



ppb	Mean	Median	Q1	Q3	Min	Max	# points
TVOC 4 to 8	11.7	9.1	0.1	15.8	0.1	45.6	112
TVOC 8 to 11	2.9	0.1	0.1	0.1	0.1	40.0	84
TVOC 11 to 16	0.1	0.1	0.1	0.1	0.1	0.1	140
TVOC 16 to 19	0.1	0.1	0.1	0.1	0.1	0.1	84
TVOC 19 to 4	8.4	0.1	0.1	12.0	0.1	52.7	252

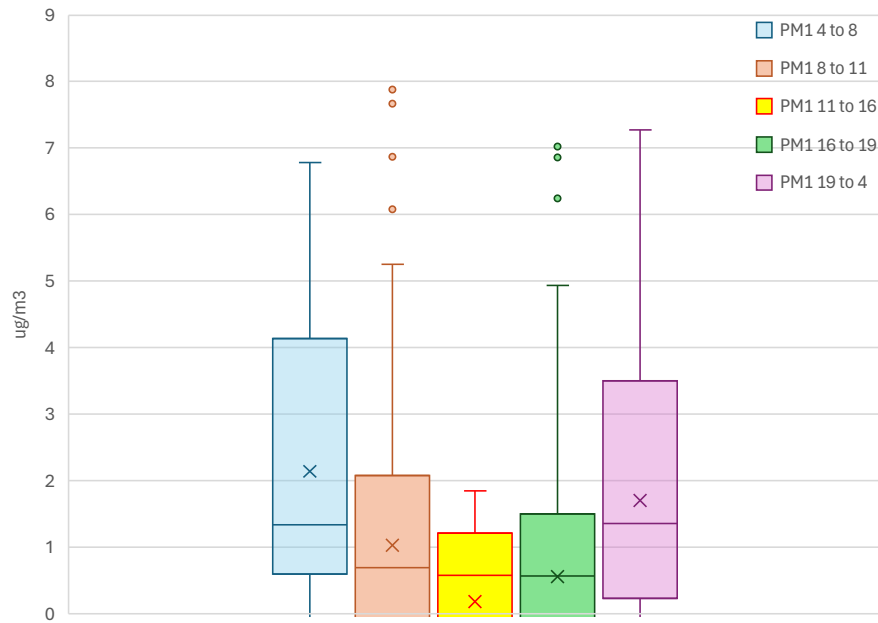
PM2.5 hourly distribution



ug/m3	Mean	Median	Q1	Q3	Min	Max	# points
PM2.5 4 to 8	4.6	3.5	2.2	7.6	-0.3	11.5	112
PM2.5 8 to 11	3.0	2.6	1.1	4.3	-1.3	13.5	84
PM2.5 11 to 16	2.0	2.5	0.6	3.6	-1.1	4.7	140
PM2.5 16 to 19	2.5	2.5	-0.7	3.9	-1.1	13.0	83
PM2.5 19 to 4	4.0	3.4	1.8	6.6	-0.8	13.5	252

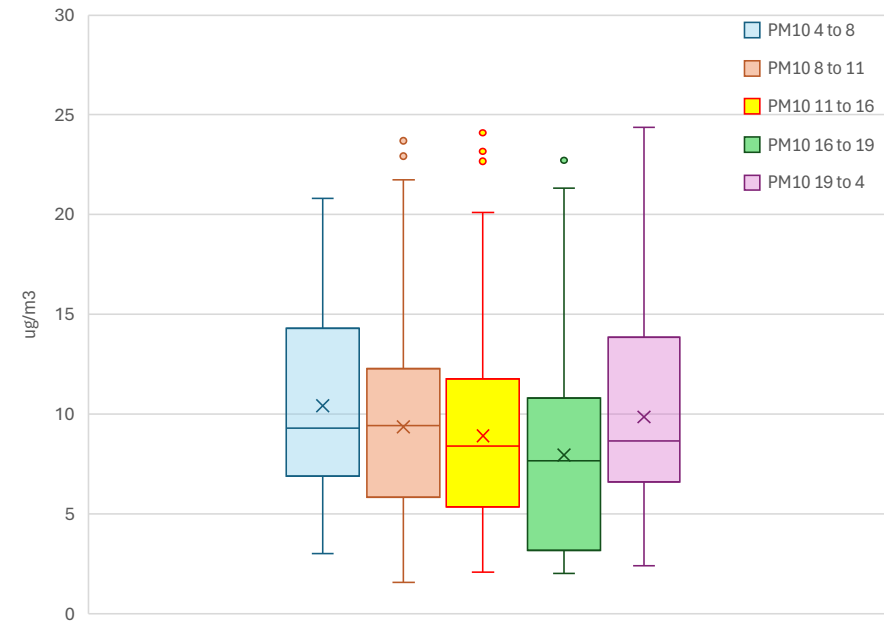
Hourly concentration distribution

PM1 hourly distribution



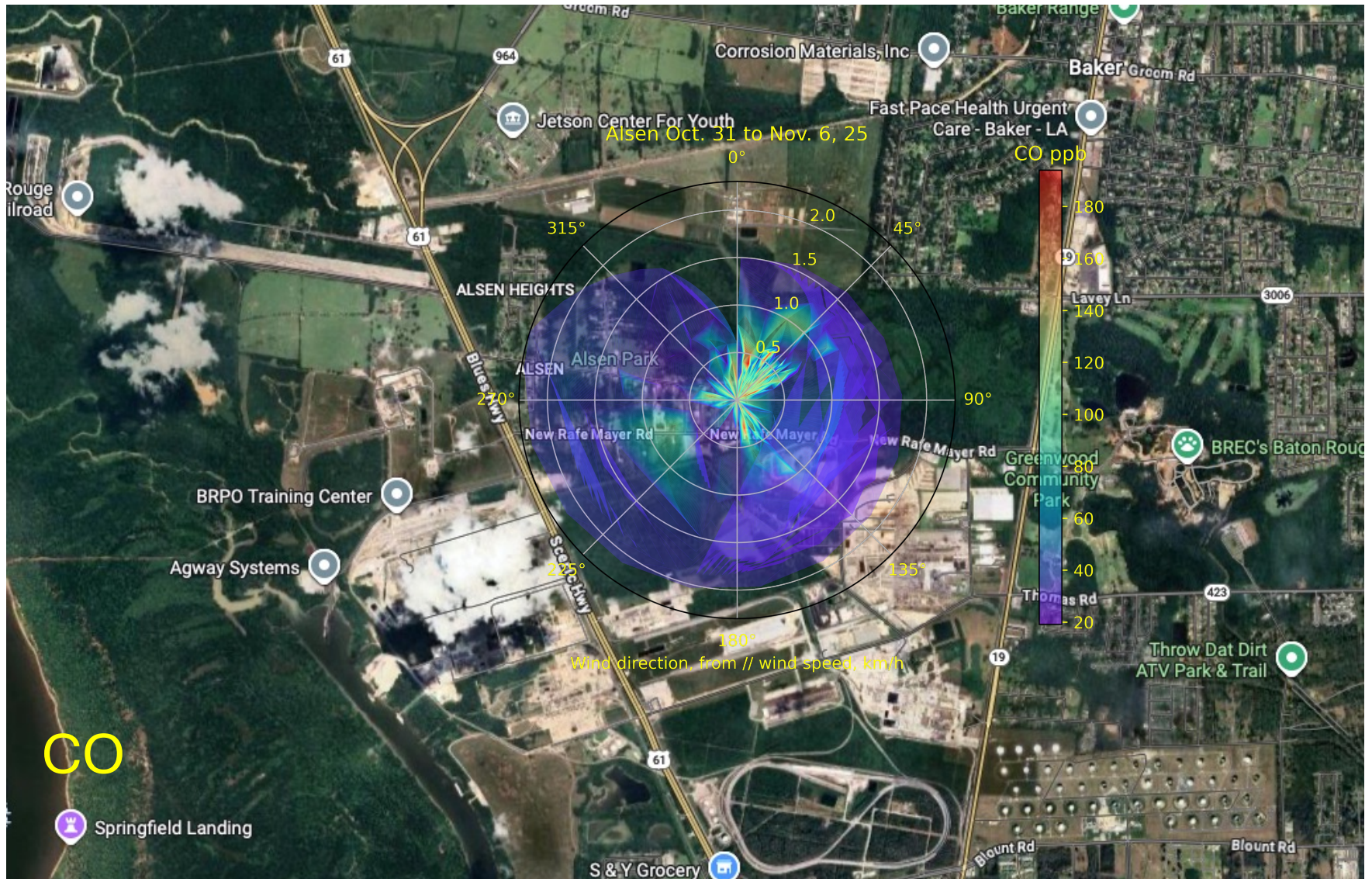
ug/m3	Mean	Median	Q1	Q3	Min	Max	# points
PM14to8	2.1	1.3	0.6	4.3	-1.1	6.8	112
PM18to11	1.0	0.7	-0.2	2.1	-1.8	7.9	84
PM111to16	0.2	0.6	-0.7	1.2	-1.8	1.9	140
PM116to19	0.6	0.6	-1.5	1.5	-1.7	7.0	83
PM119to4	1.7	1.4	0.2	3.5	-1.5	7.3	252

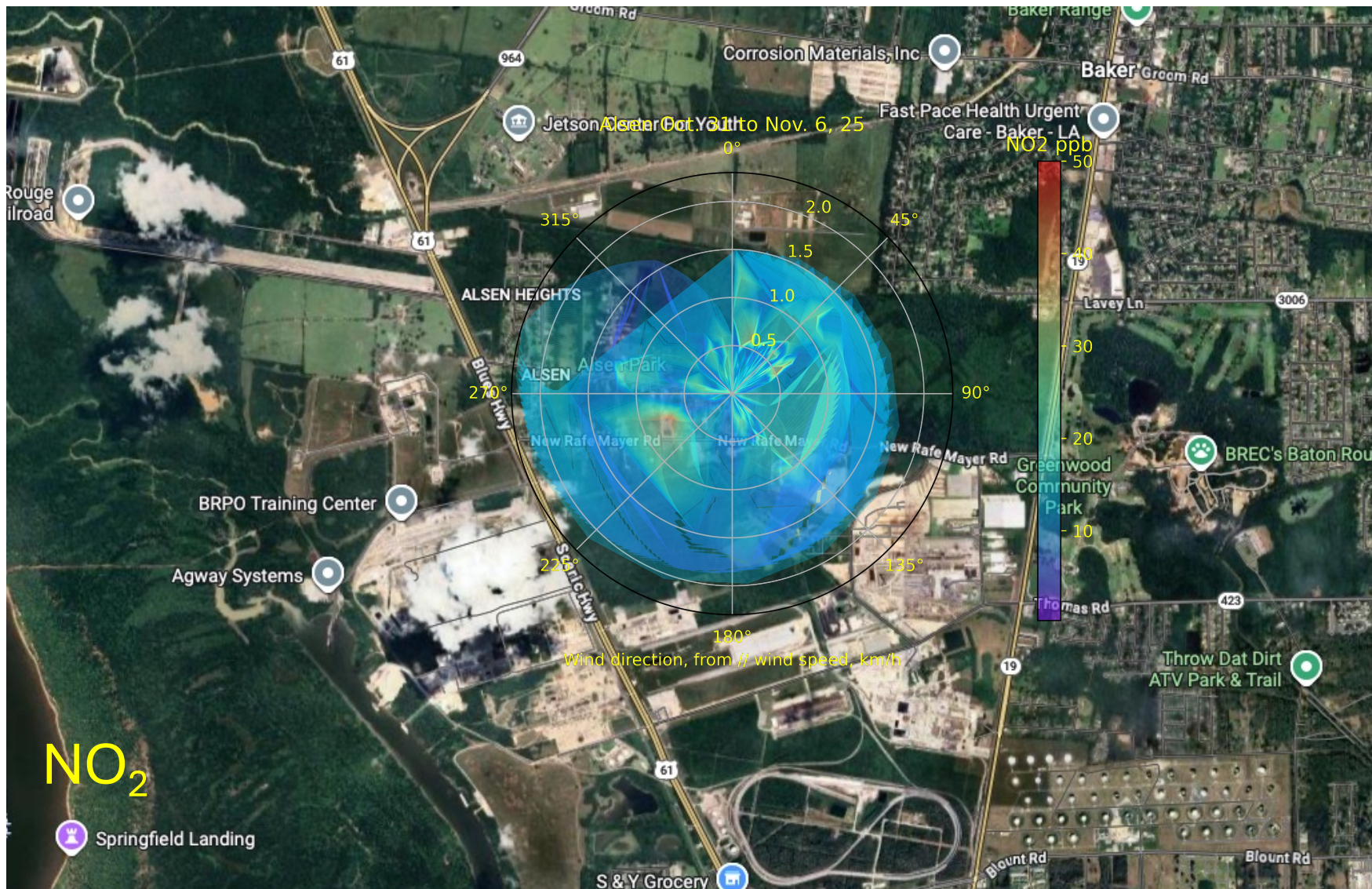
PM10 hourly distribution

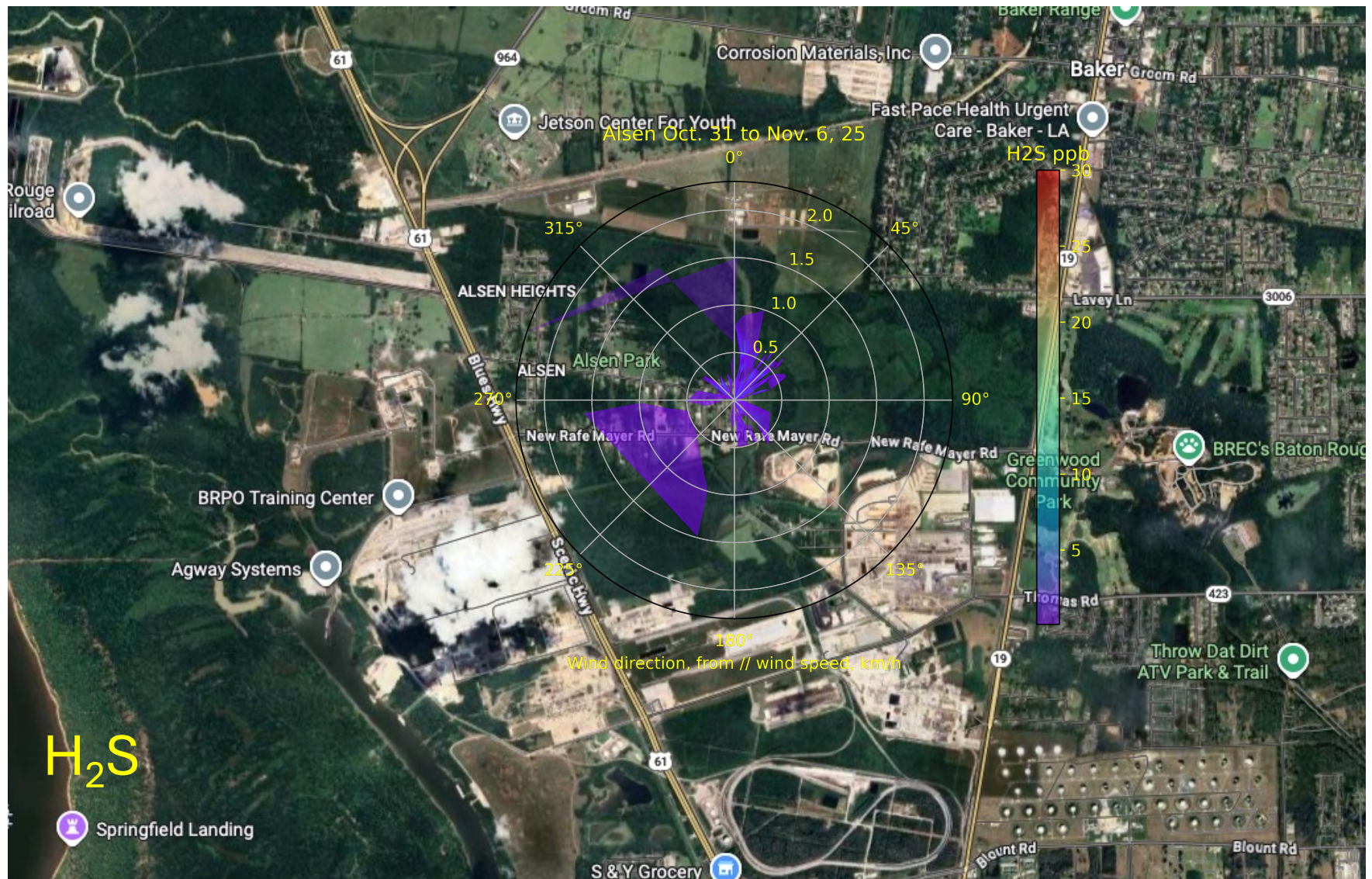


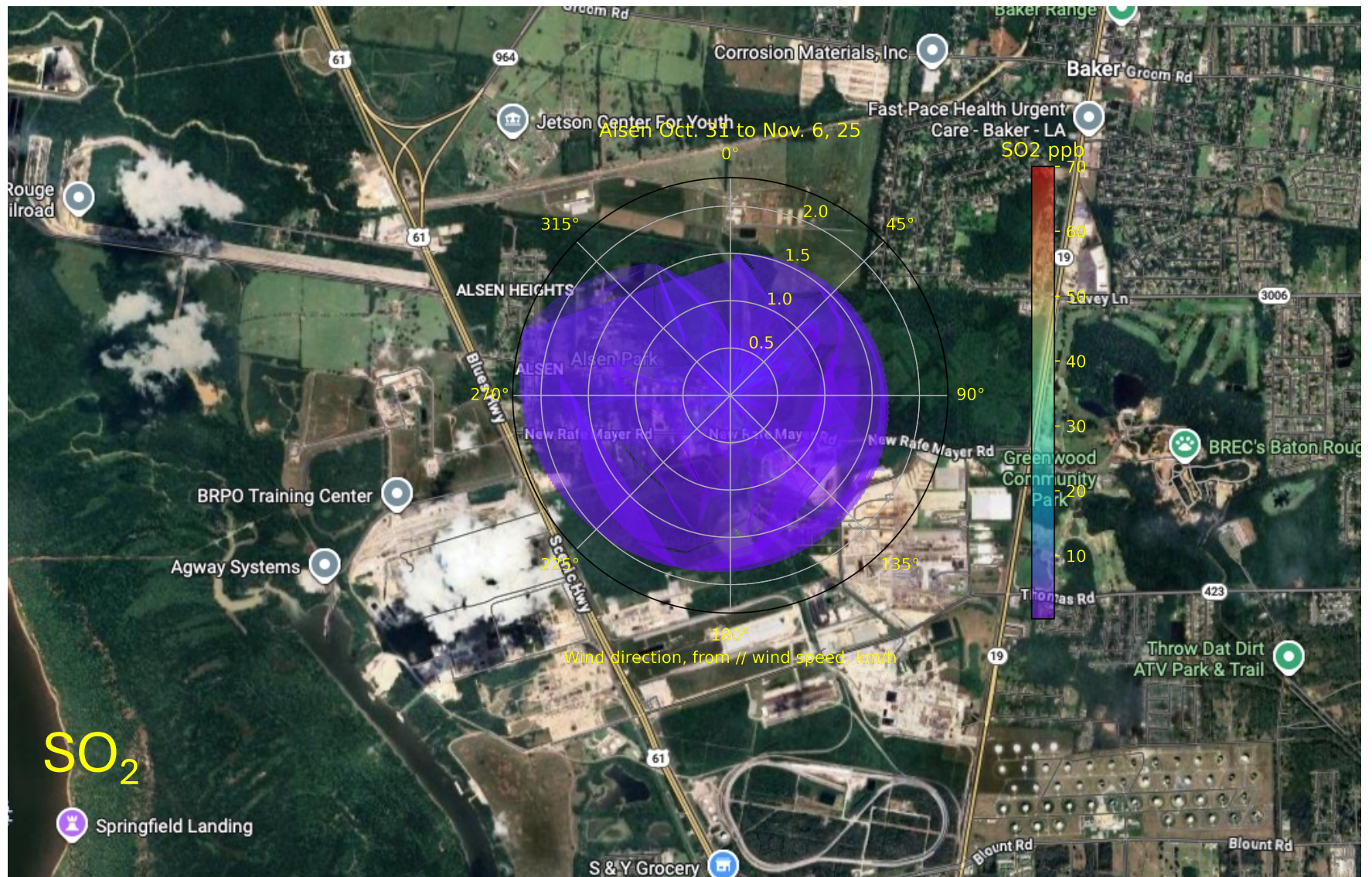
ug/m3	Mean	Median	Q1	Q3	Min	Max	# points
PM104to8	10.4	9.3	6.9	14.4	3.0	20.8	112
PM108to11	9.4	9.4	5.8	12.3	1.6	23.7	84
PM1011to16	8.9	8.4	5.4	11.8	2.1	24.1	140
PM1016to19	8.0	7.7	3.2	10.8	2.0	22.7	83
PM1019to4	9.9	8.7	6.6	13.9	2.4	24.4	252

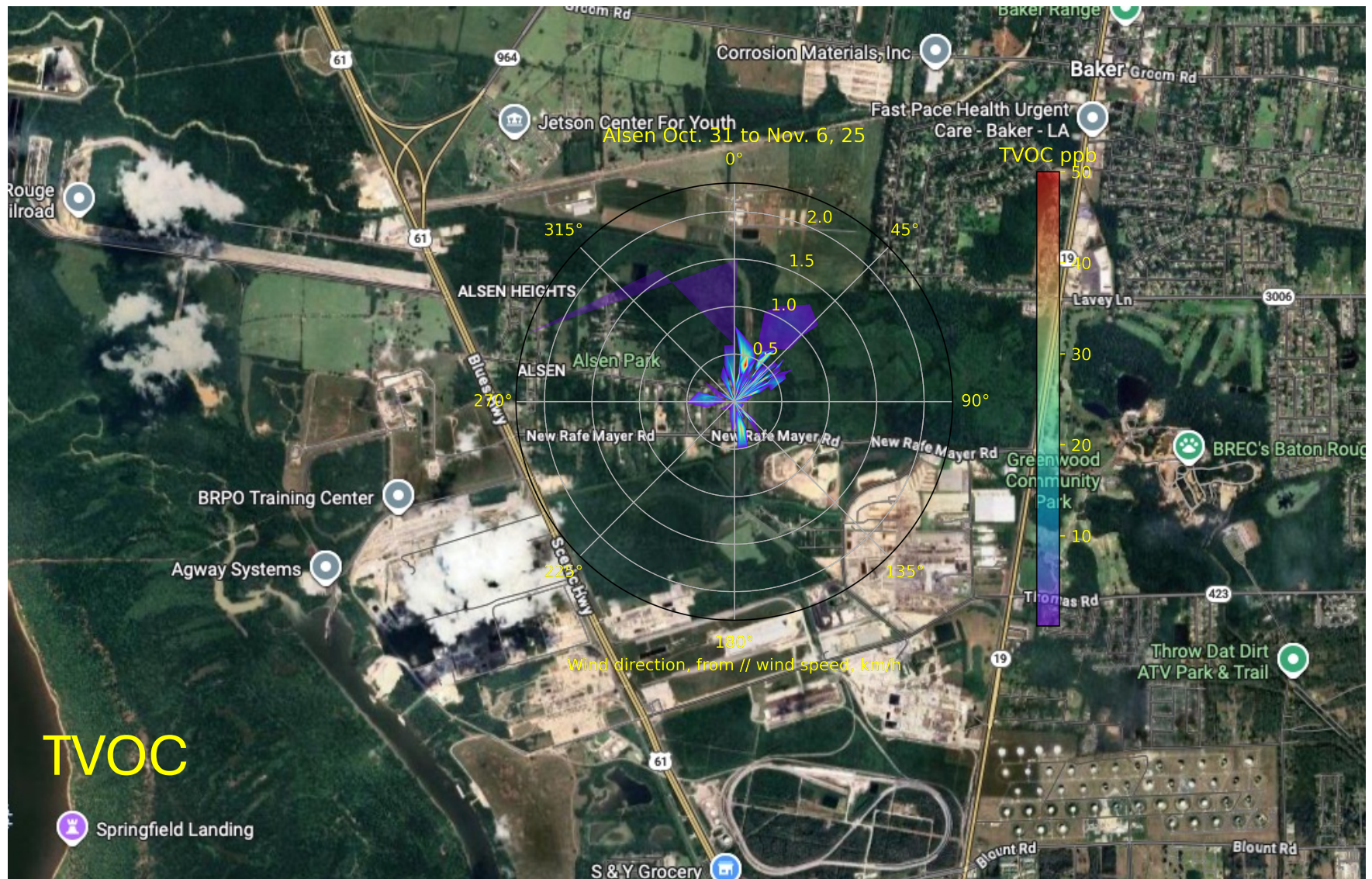
PM1 data is not referenced and calibrated against regulatory monitor

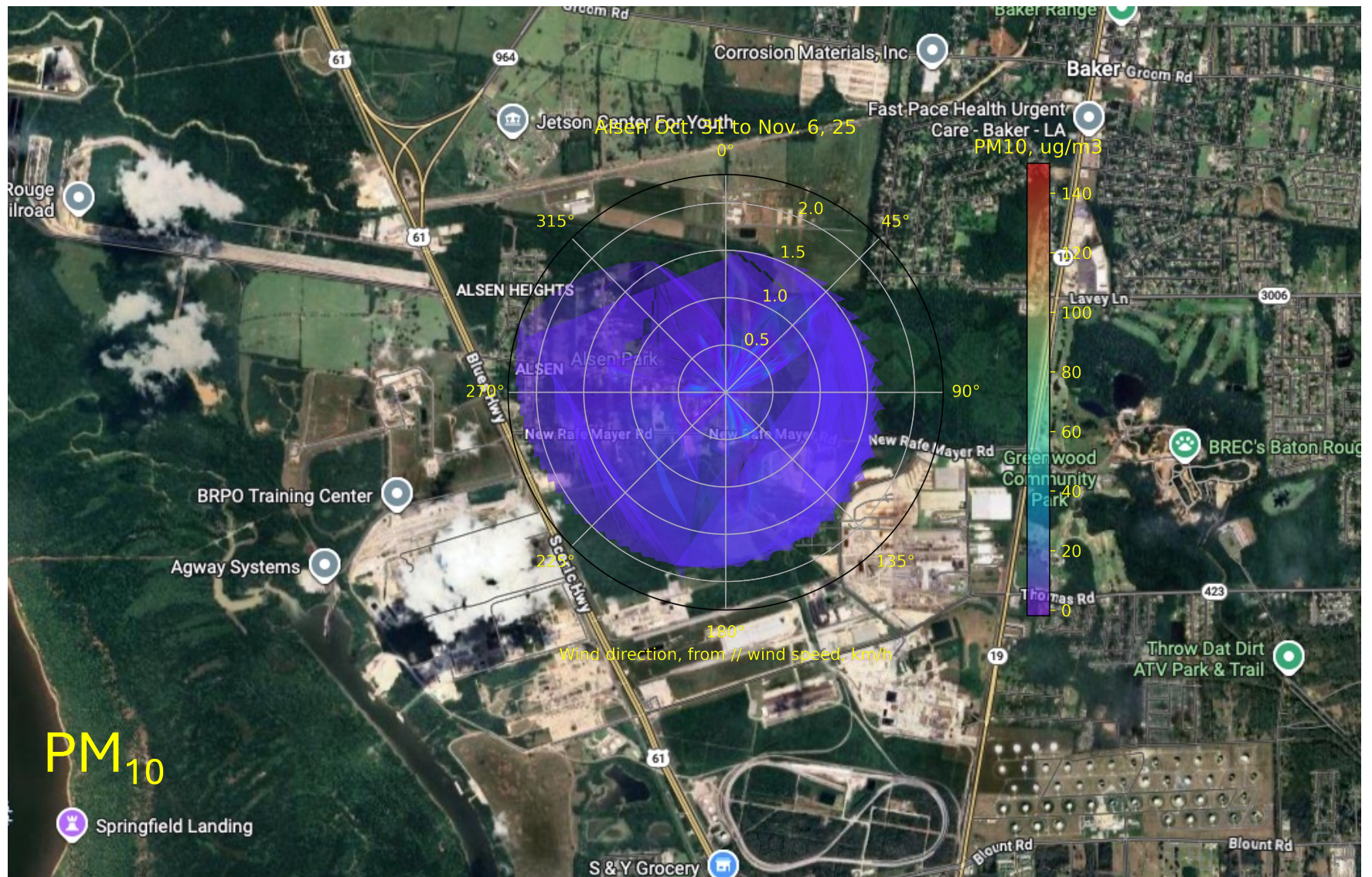


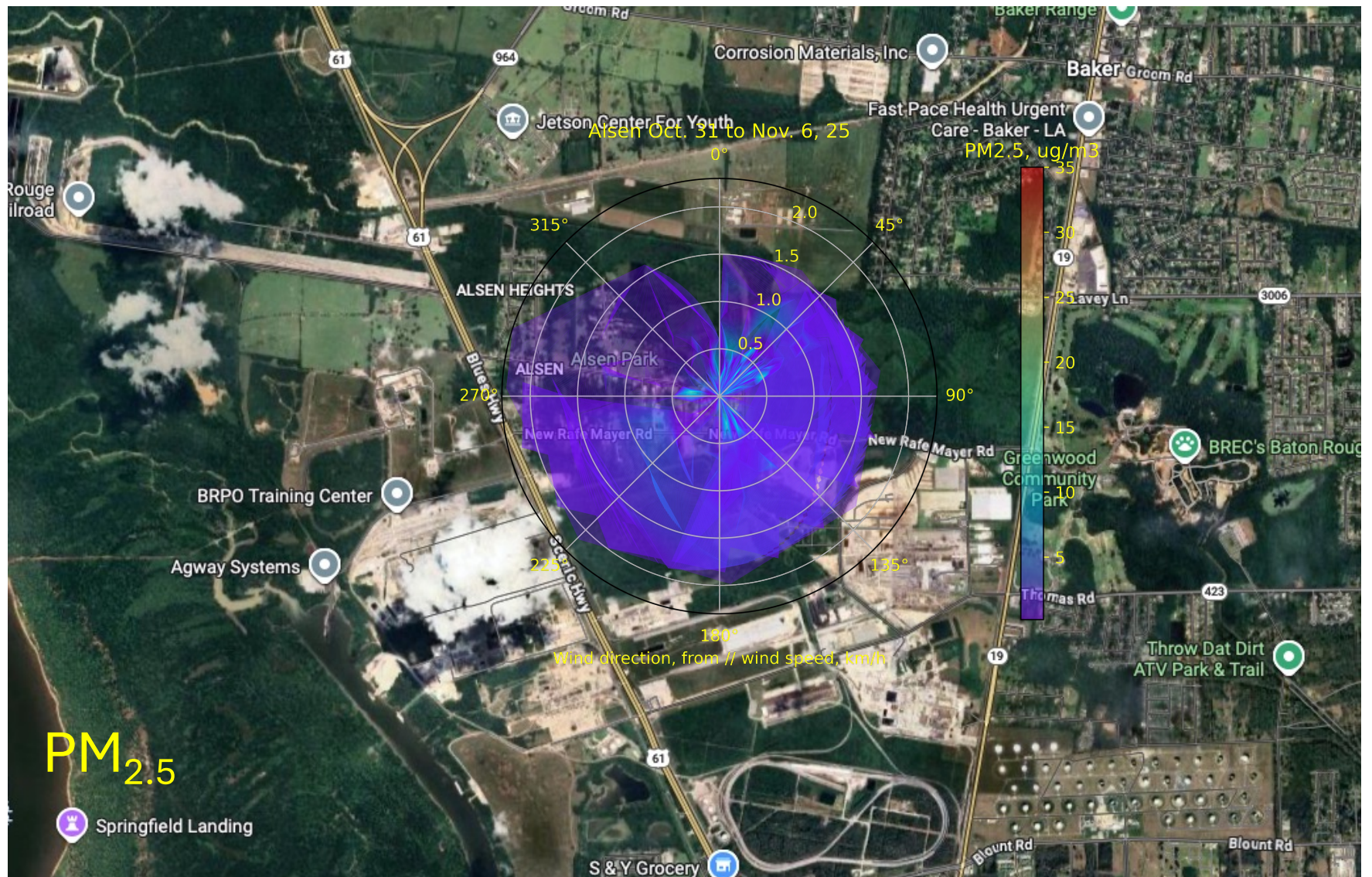


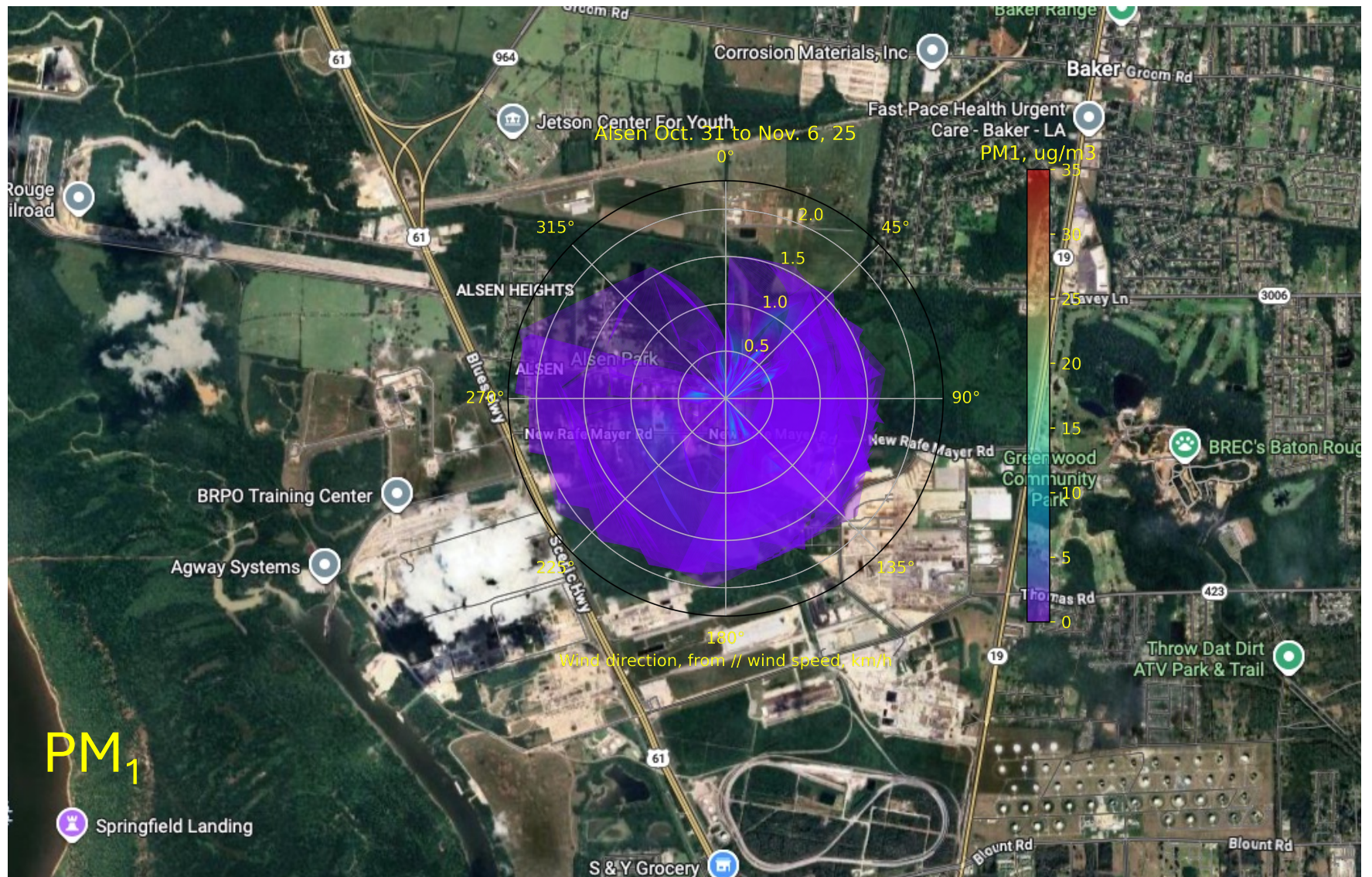


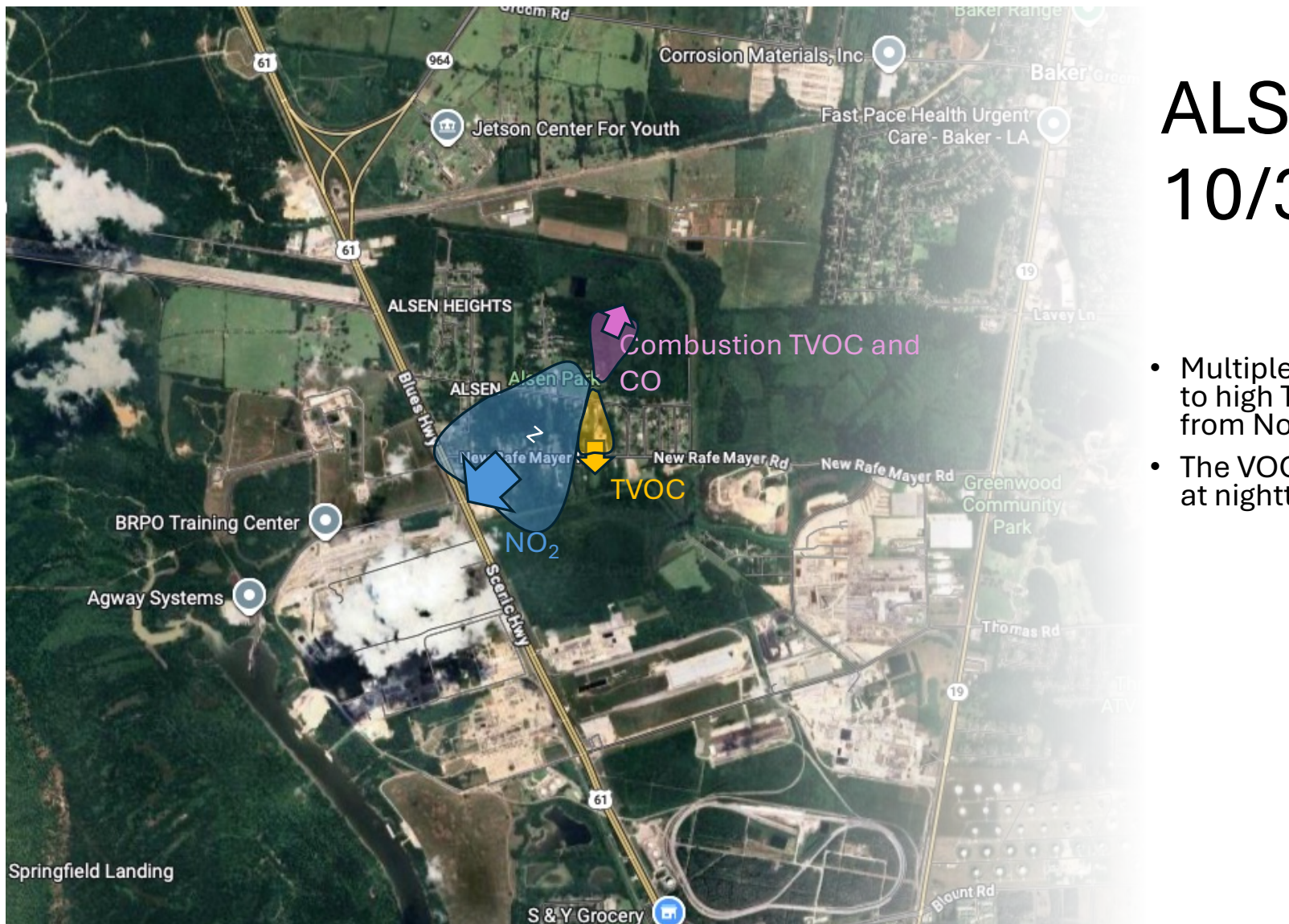












ALSEN POD

10/31-11/06

- Multiple events with elevated to high TVOC. – 2 Directions from North and South.
- The VOC elevation is mostly at nighttime hours.